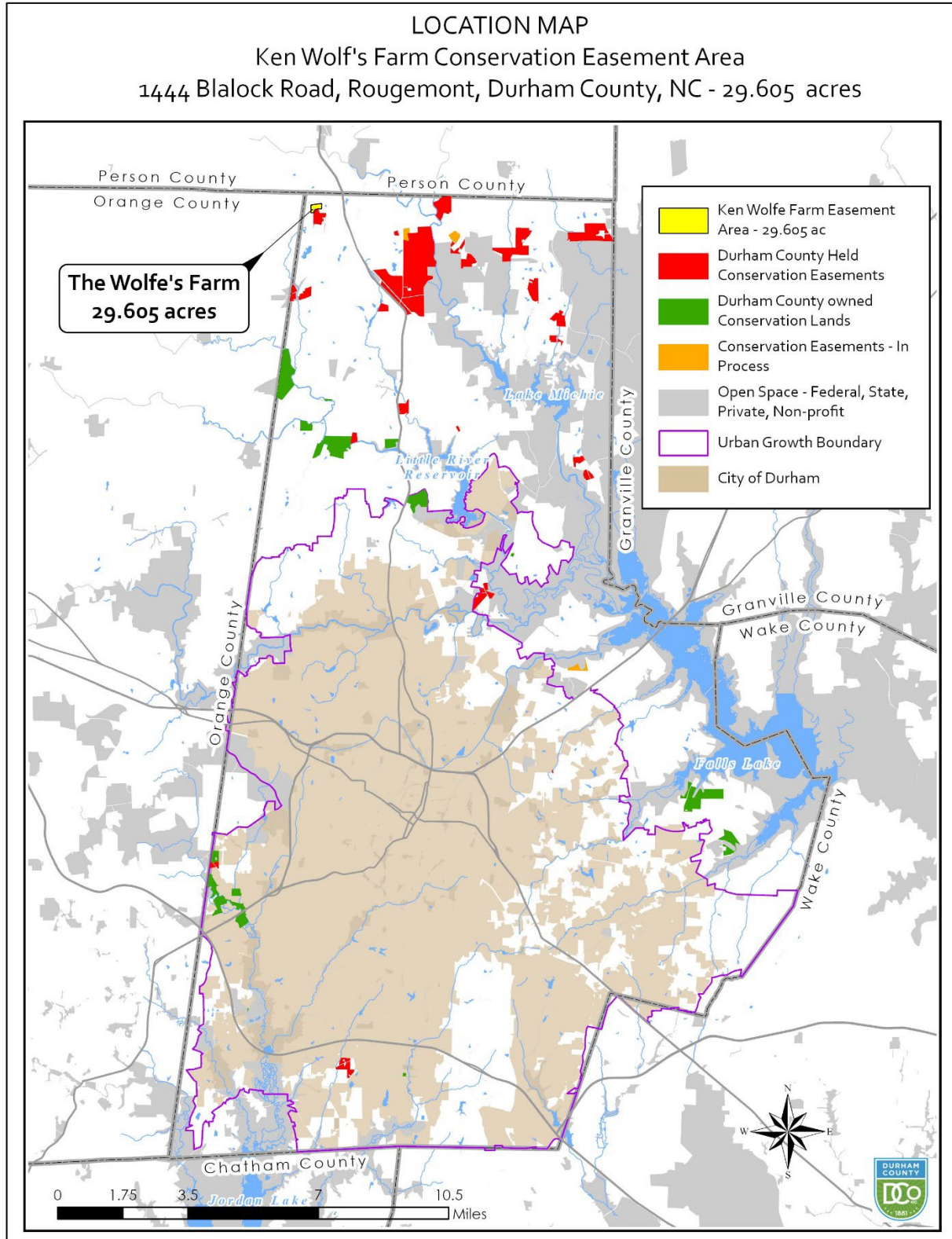
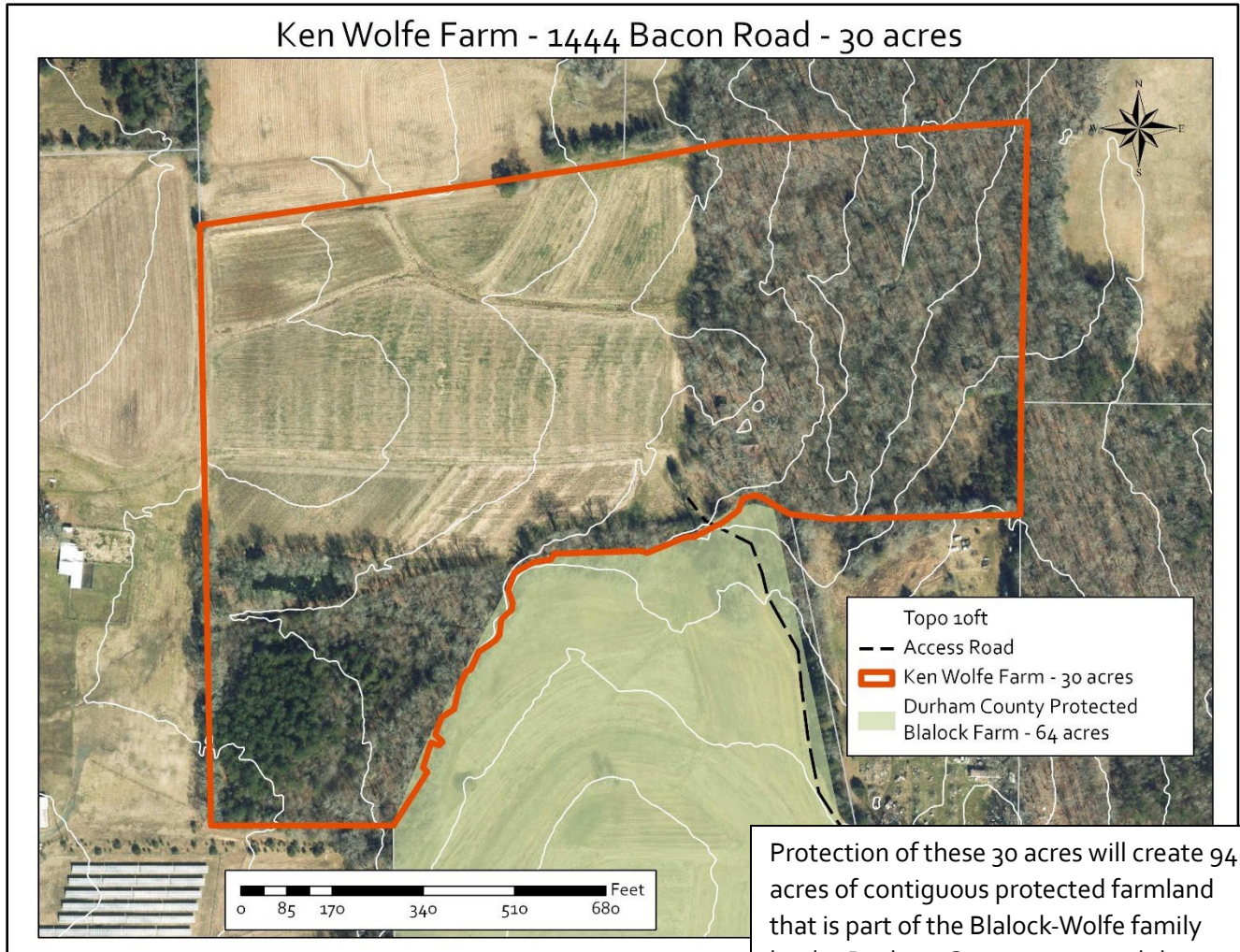


# Wolfe Farm Conservation Easement





Wolfe Farm – Ken Wolfe, owner  
 1444 Bacon Road, Rougemont (REID 189562) – approximately 30 acres



Protection of these 30 acres will create 94 acres of contiguous protected farmland that is part of the Blalock-Wolfe family lands. Durham County protected the adjacent 64 acres to the south in 2015.

The open land is currently managed for tobacco and small grains on rotation.







Ken Wolfe (left) lived on this land as a child and values the farm's family history and productive soils. His grandfather strings tobacco on the right.

The farm is within the Lake Michie/Little River Watershed Protected Area and identified on both the City of Durham's and City of Raleigh's Watershed Protection Programs as priority for conservation





## Durham County's Farmland Protection 2001 - 2025

Durham County Farm Easement	Year Acquired	Acres
Herndon Hills Farm	2001 & 2019	75
Hill Farm	2002	33
Honah Lee Farm	2005	131
Russell's Corner House Farm	2005	27
Roger Tilley Farm	2006, 2009, 2025	267
Poole Farm	2007	50
Little Mountain Farm	2009 & 2012	922
Caywood Farm	2012	300
Carrington Farm	2013	68
Van Ellis Farm	2013	69
Smith Farm	2014	91
Blalock Farm	2015	64
George Tilley Farm	2016	53
Daye Farm	2017 & 2022	36
Alston Glenn Farm	2020 & 2023	66
Dry Creek Farm	2020	30
Bahama Bluebs Farm	2020	35
McFarland Farms	2020 & 2021	98
Blazing Hill Farm	2022	33
<b>19 Farms</b>		<b>2,447</b>

<i>In Process - 2026</i>	<b>Acres</b>
<i>Clara Glenn</i>	40
<i>Bill Sparrow, Jr.</i>	40
<i>Caywood Farm II</i>	30
<i>Ken Wolfe Farm</i>	30
<i>Triangle Farm</i>	17
<i>Robin Davis (City of Durham)</i>	19
<i>Tom Washington (REPI Camp Butner)</i>	76
<b>7 farm easements in process</b>	<b>252</b>

**Gray-shaded farms have been/will be protected, in part,  
with funding through USDA-NRCS Programs.**