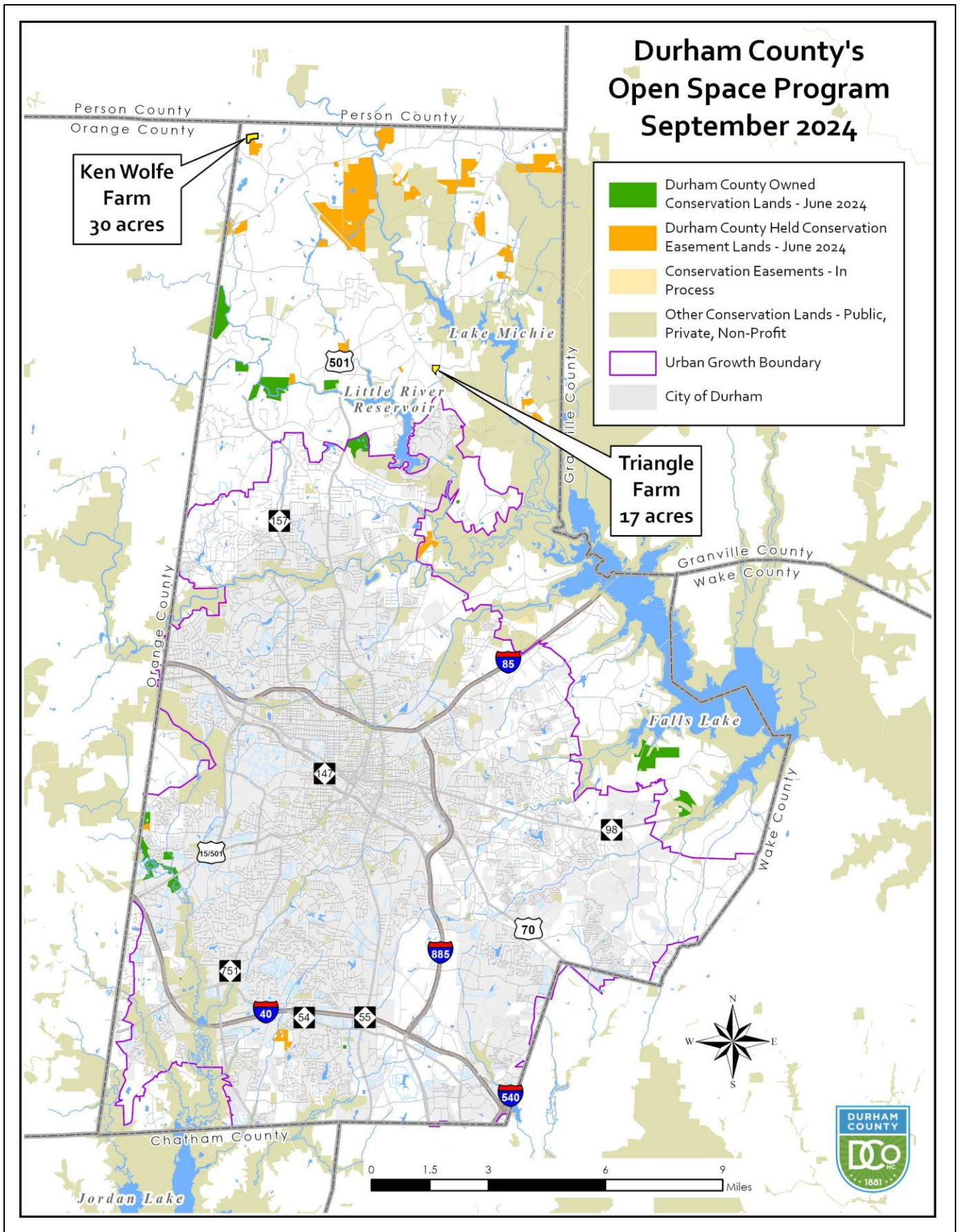
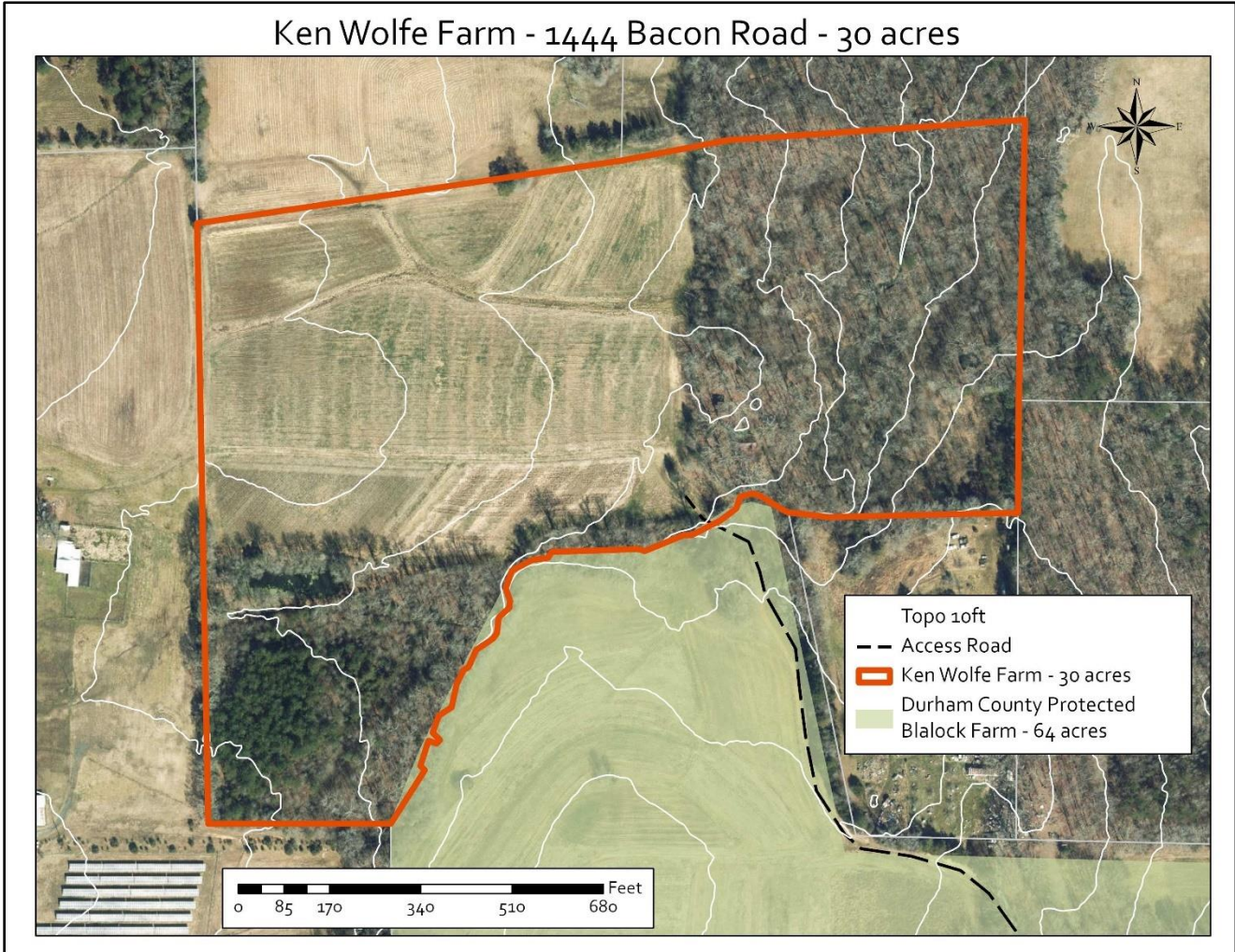


Location of Two Farms for Farm Conservation Easements



Wolfe Farm – Ken Wolfe, owner
1444 Bacon Road, Rougemont (REID 189562) - 30 acres



Ken Wolfe lived on this land as a child and values the farm’s family history and productive soils. Protection of these 30 acres will create 94 acres of contiguous protected farmland that is part of the Blalock-Wolfe family lands. Durham County protected the adjacent 64 acres to the south in 2015.



Triangle Farm – Cliff Teasley, owner
6814 Wiley Mangum Road, Bahama (REID 191649) - 17 acres

Triangle Farm - 6815 Wiley Mangum Rd - 17.26 ac

Cliff Teasley is a hay producer and wants to protect his 17 acre farm along the [North Durham Scenic Byway](#). He cuts hay on more than 200 acres in Durham and sells most of the hay from this farm where he has building and equipment storage space. Cliff grew up on this property and still lives there.

