

Mr. Joel Jones, MPA
Project Manager
Durham County Engineering and Environmental Services
201 East Main Street, Fifth Floor
Durham, NC 27701

March 25, 2025

Reference: Proposal for Construction Materials Testing (CMT) Services
Durham County Sheriff's Training Facility
Durham, North Carolina
Summit Proposal: T25-0012

Dear Mr. Jones:

Summit Design and Engineering Services, Inc is pleased to present this proposal to perform Construction Material Testing (CMT) services for the above referenced project. As providers of professional engineering services, Summit brings a proven successful testing and inspections team led by experienced engineers, engineering technicians, special inspectors and project managers. The purpose of our services is to provide construction testing and Special Inspections services, as required by code, to assess compliance with project documents. The following information forms the basis of this proposal and our scope of services:

- Our detailed review of the civil and structural drawings dated 6/17/24
- Our detailed review of the specifications dated 6/17/24
- Our detailed review of the contractor's construction schedule dated 3/20/25
- Our past experience on projects of similar size and scope.

PROJECT DESCRIPTION

We understand this project will consist of the construction of mass grading, a main building, tower with range shelter and a range shed located at 100 Electra Road, Durham, NC. We anticipate being onsite on a continuous to periodic basis during construction, as dictated by the project plans and specifications, to perform the required observation and testing services. If any of our scheduling assumptions need to be altered, we will adjust accordingly based on a Time and Materials basis.

SCOPE OF SERVICES

Our scope of services is described below and provides the basis of our fee estimate. It should be noted our services will exclude: (1) supervision, direction, or acceptance of the contractor's work; (2) interpretation or modification of the project plans or specifications; (3) submittal of test results or reports to any regulatory agency (unless specifically requested by client in writing); or (4) job site safety. The following tasks outline our proposed scope of services for this project.

Headquarters Office

320 Executive Court, Hillsborough, NC 27278

919.732.3883 // www.summitde.com

Soils Observation and Testing Services

Applicable Specifications Sections:

SECTION 31 10 00 - SITE CLEARING

SECTION 31 20 00 - EARTH MOVING

SECTION 334100 - STORM UTILITY DRAINAGE PIPING

Summit will provide an engineering technician and/or special inspector working under the supervision of a registered engineer to observe earthwork and grading activities, proofrolls, subgrade preparation, identification of unsuitable soils, remediation of unsuitable/unstable soils, and to perform compaction testing services during onsite grading activities. We anticipate that the following observations and testing will be required during earthwork and associated construction for the following:

- Compaction testing of backfill and fill material.
- Compaction testing during berm construction.

Compaction testing following grading will be performed in general accordance with the project's geotechnical report and project documents. We anticipate we will be required to perform field density testing using American Society for Testing and Materials (ASTM) procedures. Our personnel will sample on-site and imported materials used as fill and transport these samples to our laboratory in Hillsborough for testing.

Bases and Pavements Observation and Testing

Applicable Specifications Sections:

SECTION 321216 - ASPHALT PAVING

SECTION 321313 - CONCRETE PAVING

Summit will provide an engineering technician working under the supervision of a registered engineer to perform final density testing in accordance with the specifications, observe proofrolls of the prepared soil subgrade prior to ABC stone, proofrolls of the prepared ABC stone prior to placement of asphalt, observe and test asphalt and concrete paving operations, and obtain asphalt core samples for density requirements. ABC stone base compaction tests will also be performed by the nuclear gauge method or sand-cone method, as related to a standard proctor laboratory compaction test. We will provide a Field Technician II as needed to observe the placement hot-mix asphalt pavements. Additionally, we will periodically monitor hot-mix asphalt delivery temperatures, compacted thickness, and perform asphalt density testing with a nuclear gauge and obtain asphalt cores for thickness and specific gravity testing if required.

Compaction testing following grading will be performed in general accordance with the project's geotechnical report and project documents. We anticipate we will be required to perform field density testing using American Society for Testing and Materials (ASTM) procedures. Our personnel will sample on-site and imported materials used as fill and transport these samples to our laboratory in Hillsborough for testing.

Cast-In-Place Concrete Construction

Applicable Specifications Sections:

SECTION 033000 - CAST-IN-PLACE CONCRETE

Summit will provide an engineering technician working under the supervision of a registered engineer throughout construction for inspection, sampling, and field-testing services during placement of structural concrete for foundations, slab on grades, curb, sidewalks and concrete pavement. Summit will verify the soil bearing capacity of the foundations by performing Dynamic Cone Penetrometer (DCP) testing at frequencies specified. Testing, as described below, will be performed in accordance with the applicable sections in the project specifications.

Prior to the placement of concrete, we will provide an engineering technician to periodically observe the foundation bearing material, size, type, and placement (lap lengths, ties, and cover) of the reinforcing steel (rebar) prior to placement of structural cast-in-place concrete. Concrete batch tickets will be monitored during placement for mix design compliance.

We will perform slump, slump flow, air content, unit weight, and temperature testing during cast-in-place concrete placement. We will mold one set of six 4x8 inch concrete compression test cylinders at frequencies specified in the project specifications, for each type of concrete placed per day. Concrete specimens will be picked up and delivered to our laboratory after the initial on-site curing period within 48 hours.

Structural Steel Framing

Applicable Specifications Sections:

SECTION 051200 - STRUCTURAL STEEL FRAMING

As needed, we will provide an ICC Special Inspector and/or a Certified Welding Inspector (AWS-CWI) for observation and inspection during field welding and review of welding materials, equipment, and welder qualifications. We will perform visual inspection of structural bolting, field welding, and shear wall connections and patterns in accordance with the project specifications. We have assumed that fabrication of structural steel will be performed in the shop of an approved fabricator, eliminating the need for shop inspection services by Summit. Summit can perform these services on a time-and-materials basis in general accordance with the attached fee schedule, if requested.

During structural steel bolting and fit up, our services will include observation of torquing and tensioning of high strength bolts involved in critical connections as required by project plans and specifications. Additional testing fees beyond those factors in this proposal will be incurred if bolt assembly mill certifications are unavailable.

Laboratory Testing

In an effort to maintain the highest quality control standards within our company, our laboratory, equipment, and personnel are inspected both by our internal Quality Control Group and a variety of external agencies. Our laboratory and personnel periodically go through inspections and have received accreditations through CCRL (Cement and Concrete Reference Laboratory) relating to ASTM C1077 and ASTM E329 Standards; and AMRL (AASHTO Resource) relating to AASHTO R18, ASTM D3740 and ASTM E329 Standards. Each of these organizations is part of the National Institute of Standards and Technology. We have also been inspected and accredited by the Soil and Materials Laboratory of NCDOT for Tiers I, II and IV. Laboratory testing will be performed in accordance with the project document requirements to evaluate that materials comply with project requirements. Results of laboratory testing will be provided to the construction manager and designated project team members as soon as practicably available.

We anticipate that laboratory testing will be required for soil and stone backfill material, ABC stone subbase as well as concrete cylinders. Samples collected from the job site will be secured and returned to our laboratory for testing, as required. Our budget includes laboratory testing of up to 6 soils samples and compressive strength testing for up to 40 concrete cylinders.

Project Management and Engineering Consultation

Our project organization will include various field testing and inspections staff working under the overall supervision of Steve Fenton, PE, MSI. CMT services will be supervised by Matt Lill, PMP, MSI who will oversee the administrative functions for the project, including assignment of appropriate field personnel, review of field data, laboratory data, inspection reports, and communication the following with project team personnel and owner:

- The results of our field testing and inspections for each day will be summarized in a daily field report, with all results communicated to appropriate on-site personnel.
- Unusual occurrences will be communicated in a timely manner.
- Scheduling conflicts due to contractor error, work cancellations upon Summit's arrival, retesting and non-compliance testing, and contractor's convenience testing will be tracked throughout project and reported to owner for tracking purposes of appropriate back charges to contractor.
- Non-conforming items that are not corrected on the same date that they are initially observed will be communicated to the owner, building official, general contractor, and design team immediately.
- The results of concrete, grout and mortar compressive strength testing will be available electronically to the project team within 48 hours, as the tests are performed. Test results will be available through e-mail and summarized in our monthly summary report.

The project will be closely managed to identify potential budget and schedule impacts during the course of the project. Summit's project manager will also monitor field operations for possible out-of-scope items or retesting due to failed tests that develop during the course of the project that are not included in this proposal and preliminary fee estimate. Retesting will be tracked, quantified and provided to owner so that those costs can be back charged to the contractor performing the work if desired.

Final Testing Letter

Upon completion of the project, a final summary report will be prepared by Summit to document geotechnical observations, testing services, special inspections and laboratory testing services during this phase of construction. In the event other project deliverables become required for reasons unknown at this time, including but not limited to failed test items requiring further analysis and/or reporting, additional fees may be incurred beyond those contained in the attached fee estimate.

SCHEDULE

At the time of this proposal, a construction schedule was not available. Based on our experience with previous similar projects, we anticipate that 1 Summit representative will be required on-site on a full-time to part-time basis throughout construction. For scheduling of our field-personnel, Summit must be contacted prior to 1:00 p.m. the day before our services is required and/or at least 24 hours in advance. Our visits will be coordinated with the contractor's project site superintendent and/or an owner's representative.

FEE ESTIMATE

Based on the scope of services outlined herein and our understanding of the available project construction information, we recommend an estimated allowance of **\$128,550.00** be included for the cost of our CMT services as described herein. Please note that the budget allowance stated and illustrated herein **does not** constitute a "lump sum" fee for our services. **CMT services will be invoiced on an on-call, time and materials basis at the rates indicated on the attached unit fee schedule for those services we are requested to provide by the general contractor throughout the project construction duration. We will only invoice for actual services provided at your scheduled request.**

Our recommended budget allowance is based on providing the scope of services outlined herein only. If the construction schedule, actual material quantities, or requirements for the project are different from what we have described herein, we reserve the right to review our scope and budget allowance with respect to the new information and propose necessary changes to you. Some factors that commonly affect our proposed budget allowance include re-testing and re-inspections, overtime work, adverse weather events that affect the construction materials on-site or our scheduling, additional laboratory testing, performance of additional services not explicitly listed herein, and

poor scheduling (or late cancelling) of our field services by the general contractor's personnel. We will attempt to coordinate our services with the contractor to efficiently service the project.

ASSUMPTIONS

During our proposal preparation certain assumptions were required based on our review of the project documents. Based on the available information (noted above), the following assumptions apply:

- Rates associated with overtime work are at 1.5 times the listed hourly rates in the attached fee schedule and rates shown on the Fee Summary. We associate overtime pay with those hours exceeding 8 hours per day, nights and weekends.
- Weekend and/or night work is not anticipated for this project.
- We assume our services will be primarily required over a span of 18 months.
 - Based upon the way construction activities are stacked up, we anticipate having one technician and/or inspector onsite on a near full-time basis through a majority of the structural construction, with the remaining portion of time being part-time for one inspector.
 - We assume full-time weeks are based on 50 hours per week.
- We assume all other PM and Engineering services can be completed in 1 hour a week (on average).
- Laboratory testing and compaction testing will be performed in accordance with ASTM standards.
- Expected hours and unit charges are detailed in the cost estimate provided.

LIMITATIONS

Our work will be performed in a manner consistent with that level of care and skill ordinarily exercised by other members of Summit's profession practicing in the same locality, under similar conditions, and at the date the services are provided. Our conclusions, opinions, and recommendations will be based on a limited number of observations and data. It is possible that conditions could vary between or beyond the data evaluated. In all cases, the contractor is solely responsible for the direction and quality of the work, adherence to plans and specifications, and repair of defects regardless of when they are found. Summit makes no guarantee or warranty, express or implied, regarding the services, communication (oral or written), report, opinion, or instrument of service provided.

Safety of our employees is of paramount concern to Summit. You will be notified if the location of the project represents a potential safety concern to our employees. Unsafe conditions for fieldwork will require a modification of our estimated scope of work and associated fees. We will advise you of the additional costs necessary to mitigate these unanticipated conditions, if applicable.

CLOSURE

We appreciate the opportunity to submit this proposal and look forward to working with you on this project. If we have excluded any services that are required, please contact us so that we can modify this proposal, or provide an additional proposal, for these services. If you have any questions concerning this proposal, please contact us at your convenience at (919) 732-3883.

Sincerely,

SUMMIT DESIGN AND ENGINEERING SERVICES, INC.
Firm's NC License No. C-5176

Matt Lill, PMP, MSI
Project Manager
CMT & SI Department
Matt.Lill@summitde.com
Cell: 919-802-4055



SUMMARY OF COST ESTIMATE

T25-0012 Durham County Sheriff Training Facility

LABOR CATEGORY	Field Technician II	Field Technician II	Project Manager	Senior Project Manager	TOTAL HOURS	TASK LABOR FEE	TASK LAB FEE	TASK UNITS AND EXPENSES	TOTAL TASK FEE
	<i>Billing rate (\$/hr)</i>	<i>\$80.00</i>	<i>\$120.00</i>	<i>\$180.00</i>					
Laboratory Testing - Buildings	0	0	0	0	0	\$0	\$3,180	\$0	\$3,180
Sitework and Utilities	920	230	0	0	1150	\$101,200	\$800	\$3,450	\$105,450
Concrete Insp & Testing	60	0	0	0	60	\$4,800	\$0	\$0	\$4,800
Steel Insp & Testing	8	0	0	0	8	\$640	\$0	\$0	\$640
Concrete and Asphalt Paving	80	0	0	0	80	\$6,400	\$0	\$0	\$6,400
Project Management	0	0	40	0	40	\$7,200	\$0	\$0	\$7,200
Engineering/Final Report/Letters	0	0	0	4	4	\$880	\$0	\$0	\$880
LABOR HOURS	1068	230	40	4	1342				
LABOR FEE	\$85,440	\$27,600	\$7,200	\$880		\$121,120	\$3,980	\$3,450	\$128,550

SUMMIT DESIGN AND ENGINEERING SERVICES

STANDARD RATES

POSITION	BILLING RATE
Principal Architect	\$245.00
Senior Architect/Engineer	\$240.00
Senior Project Manager	\$220.00
Project Manager	\$180.00
Senior Professional	\$185.00
Project Professional III	\$180.00
Project Professional II	\$150.00
Project Professional I	\$130.00
Engineering Intern	\$120.00
Intern	\$70.00
Project Coordinator	\$135.00
Staff Professional III	\$115.00
Staff Professional II	\$105.00
Staff Professional I	\$85.00
Designer III	\$125.00
Designer II	\$115.00
Designer I	\$95.00
Construction Inspector	\$100.00
Field Technician IV	\$90.00
Field Technician III	\$85.00
Field Technician II	\$80.00
Field Technician I	\$60.00
Principal Planner	\$185.00
Planner III	\$130.00
Planner II	\$120.00
Planner I	\$95.00
Planning Technician	\$85.00
Admin/Clerical	\$70.00

DIRECT EXPENSES

COST +15%

Field Services: Scheduling of field services requires no less than 24 hours notice

Overtime for Field Services:

Over 8 hours a day, Over 40 hr/week, nights and Saturdays

Regular Time x 1.5 per hour

Doubletime: Sundays and Holidays

Regular Time x 2 per hour

Travel (Portal to Portal)

Prices are in effect 30 days from the date of proposal

Rates are subject to a 5% Annual Escalation

SUMMIT DESIGN AND ENGINEERING SERVICES

STANDARD UNIT RATES

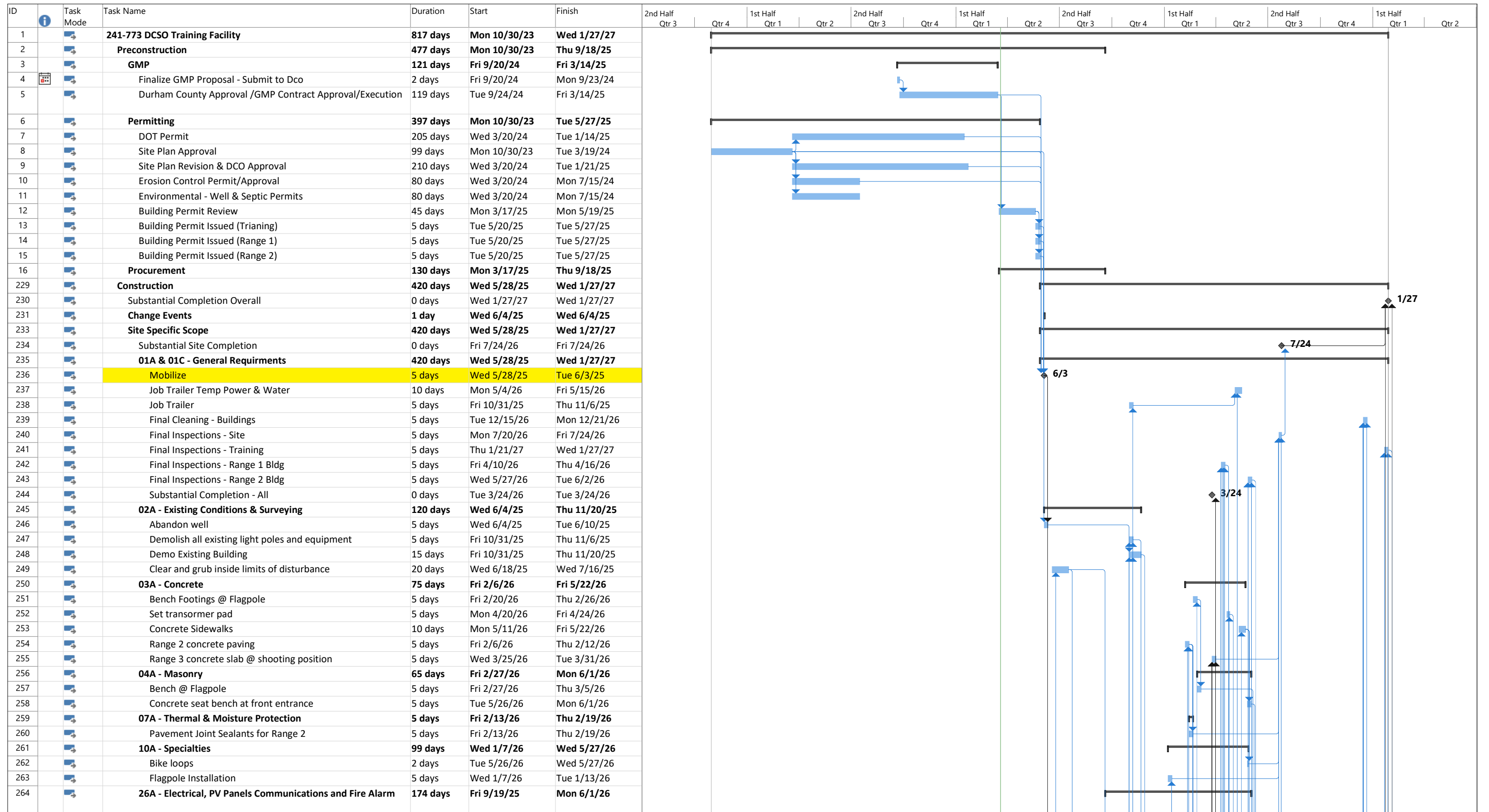
LABORATORY RATES		
Unit Name	Unit Price	
Visual Manual Classification (D2488)	\$50.00	Each
Soil Classification (USCS - D2487)	\$8.00	Each
Water Content / Natural Moisture (D2166)	\$10.00	Each
Particle Size Sieve Analysis (D6913/D422)	\$95.00	Each
Hydrometer Analysis (D7928/D422)	\$70.00	Each
Percent Passing #200 by Washing (D1140)	\$50.00	Each
Aggregate Sieve Analysis (C136/C117)	\$90.00	Each
ABC Stone Gradation (AASHTO T27/NCDOT Mod)	\$150.00	Each
NCDOT Classification (AASHTO M145)	\$180.00	Each
pH of Soil (AASHTO T289)	\$25.00	Each
Atterberg Limits (D4318)	\$80.00	Each
Specific Gravity of Soils (D854)	\$80.00	Each
Standard Proctor (D698)	\$165.00	Each
Modified Proctor (D1557)	\$190.00	Each
NCDOT ABC Proctor (AASHTO T180/NCDOT)	\$195.00	Each
Soil/Cement Proctor (D558)	\$350.00	Each
California Bearing Ratio (CBR - D1883)	\$490.00	Each
Thermal Resistivity / Conductivity of Soils (D5334)	\$700.00	Each
Specific Gravity of Aggregate (C127/C128)	\$90.00	Each
Concrete Compressive Strength of Cylinders (C39)	\$20.00	Each
Concrete Core Compressive Strength (C42/C39)	\$40.00	Each
Flexural Strength of Concrete Beams (C78)	\$45.00	Each
Grout Prism Compressive Strength (C1019)	\$35.00	Each
Mortar/Grout Cube Compressive Strength (C109)	\$20.00	Each
Lightweight Concrete Density (C567)	\$30.00	Each
CMU Compressive Strength (C140)	\$225.00	Each
Specific Gravity - Asphalt Cores (D2726)	\$40.00	Each
Fireproofing Density (E605)	\$15.00	Each
3" Dia. Flex Wall Permeability (undisturbed - D5084)	\$275.00	Each
3" Dia. Flex Wall Permeability (remolded - D5084)	\$290.00	Each
3"- 4" Dia. Rigid Wall Permeability (Sands - D2434)	\$290.00	Each
Unconfined Compression, peak load (undisturbed - D2166/D1633)	\$70.00	Each
Unconfined Compression, peak load (undisturbed - D2166/D1633)	\$75.00	Each
Unconfined Compression, with Stress/Strain plot (undisturbed - D2166)	\$125.00	Each
Unconfined Compression, with Stress/Strain plot (remolded - D2166)	\$145.00	Each
Unconsolidated Undrained Triaxial - UU, (undisturbed, 3" dia. - D2850)	\$175.00	Each
Unconsolidated Undrained Triaxial - UU, (remolded, 3" dia. - D2850)	\$200.00	Each
Consolidated Undrained Triaxial - CU, (3 Points, undisturbed - D4767)	\$1190.00	Each
Consolidated Undrained Triaxial - CU, (3 Points, remolded, 3" dia.- D4767)	\$1290.00	Each
Consolidated Drained Triaxial - CD, (Per Point, undisturbed, 3" dia.- D7181)	\$545.00	Each
One Dimensional Consolidation (2.5", 2 rebound curves, Cv plot, D2435)	\$690.00	Each
One Dimensional Consolidation (2.5", 2 rebound curves, D2435)	\$525.00	Each

DRILLING RATES		
Unit Name	Unit Price	
Mob/ Demob (ATV Water Buggie)*	\$750.00	Each
Mob/ Demob(Drill Rig)*	\$750.00	Each
Additional Mileage (Beyond 50 Mile Radius)	\$6.00	Mile
Drill/Sample 0-50 Mud Rot Up to 3 7/8"	\$18.50	Foot
Drill/Sample 50-100 Mud Rot Up to 3 7/8"	\$22.00	Foot
Drill/Sample 100-150 Mud Rot Up to 3 7/8"	\$24.00	Foot
Drill/ Sample 0-50 Hollow St 2 1/ 4"	\$18.50	Foot
Drill/ Sample 50-100 Hollow St 2 1/ 4"	\$22.00	Foot
Borehole Casing (Steel, NW)	\$12.00	Foot
Borehole Casing (Steel, HW)	\$12.00	Foot
Auger Probes 0-50 ft.	\$12.50	Foot
Rock Coring 0-50 ft. BGS (NQ2)	\$76.00	Foot
Rock Coring 50-100 ft. BGS (NQ2)	\$80.00	Foot
Rock Coring 100-150 ft. BGS (NQ2)	\$84.00	Foot
Rock Coring 150+ ft. BGS (NQ2)	\$89.00	Foot
Extra Split-Spoon Samples (0-50 ft.)	\$31.00	Each
Extra Split-Spoon Samples (50-100 ft.)	\$56.00	Each
Extra Split-Spoon Samples (100-150 ft.)	\$102.00	Each
Bulk Samples	\$40.00	Each
Shelby Tube Samples	\$160.00	Foot
Piezometers (Labor & Materials, Ex Borehole)	\$18.00	Foot
Materials (Hole Plug-Abandoned Holes)	\$12.00	Each
Grouting Boreholes - Neat Cement Up to 5"	\$25.00	Foot
Hauling Water	\$235.00	Hour
Water Truck/ Water Buggie	\$250.00	Day
Standby/Moves/Cleanup/ Clearing with Chainsaw	\$235.00	Hour
Rock Coring/ Rotary Setup	\$130.00	Each
Additional Helper (Requested by Client)	\$400.00	Day
Daily Rate - Drill Rig & Crew - 8 Hours*	\$2500.00	Day
Daily Rate (Half Day) - Drill Rig & Crew*	\$1250.00	Day
Borehole Casing Using Casing Advancer	\$24.00	Foot
Vehicle Mileage	\$0.65	Mile
Surcharge Hard Drilling (> 100 bpf)	\$5.50	Foot
Per Diem Daily Rate - Per Person	\$175.00	Night
Crew Travel Time	\$190.00	Hour

PAVEMENT INVESTIGATION SERVICES		
Pavement Investigation - Rig & Crew - Day	\$2500.00	Day
Pavement Investigation - Rig & Crew - Night	\$3200.00	Night

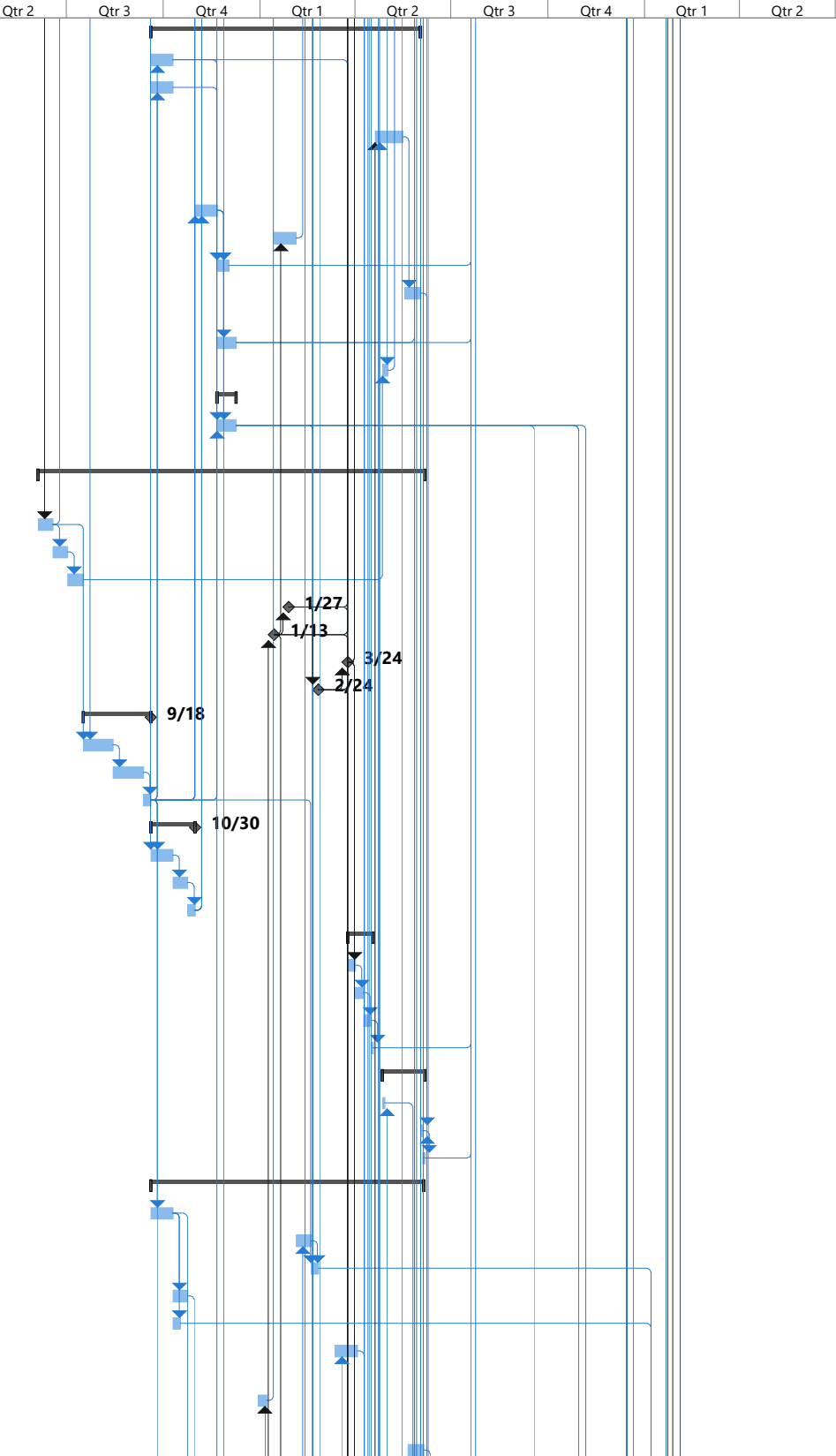
EQUIPMENT RATES		
Nuclear Density Gauge	\$30.00	Day
Floor Flatness Equipment	\$100.00	Day
Coring Equipment and Generator	\$250.00	Day
Pile Axial and Lateral Load Testing Equipment	\$250.00	Day

Unit Prices are in effect for 30 days from the date of proposal.
 Rates are subject to a 5% Annual Escalation.
 *Within 50 mile radius of Hillsborough, NC Office; beyond 50 mile radius quoted on a case by case basis.
 Laboratory will retain untested portions of samples for a period of 30 days following submission of report, unless otherwise requested.
 All laboratory test methods referenced above are performed in general accordance with the current version of ASTM unless otherwise noted.



Project: Durham County Sheriff Date: Thu 3/20/25	Task		Inactive Task		Manual Summary Rollup		External Milestone		Path Driven Successor Summary Task
	Split		Inactive Milestone		Manual Summary		Deadline		Path Driven Successor Normal Task
	Milestone		Inactive Summary		Start-only		Path Driving Predecessor Milestone Task		Path Driven Successor Milestone Task
	Summary		Manual Task		Finish-only		Path Driving Predecessor Summary Task		Progress
	Project Summary		Duration-only		External Tasks		Path Driving Predecessor Normal Task		Manual Progress

ID	Task Mode	Task Name	Duration	Start	Finish	2nd Half Qtr 3	Qtr 4	1st Half Qtr 1	Qtr 2	2nd Half Qtr 3	Qtr 4	1st Half Qtr 1	Qtr 2	2nd Half Qtr 3	Qtr 4	1st Half Qtr 1	Qtr 2	2nd Half Qtr 3	Qtr 4	1st Half Qtr 1	Qtr 2	
265		Site Lighting and other	174 days	Fri 9/19/25	Mon 6/1/26																	
266		Underground RI - Gate	15 days	Fri 9/19/25	Thu 10/9/25																	
267		Underground RI - Road entrance site lighting/security	15 days	Fri 9/19/25	Thu 10/9/25																	
268		Underground RI - Building Parking Lot lighting/Security and Electrical Vehicle Charging Stations	20 days	Mon 4/20/26	Fri 5/15/26																	
269		Underground RI - Auction Lot lighing/security	15 days	Fri 10/31/25	Thu 11/20/25																	
270		Underground RI - Range 2 building and range	15 days	Wed 1/14/26	Tue 2/3/26																	
271		Install main gate power and security	5 days	Fri 11/21/25	Mon 12/1/25																	
272		Install Training Building Parking Lot Lighting and Vehicle Charging Stations	10 days	Mon 5/18/26	Mon 6/1/26																	
273		Install Range 2 Site Lighting/security	10 days	Fri 11/21/25	Mon 12/8/25																	
274		Duke Energy Service/Transformer	5 days	Mon 4/27/26	Fri 5/1/26																	
275		27A - Access Control and Security	10 days	Fri 11/21/25	Mon 12/8/25																	
276		Telecom/Data Service for All buildings from Redwood Road	10 days	Fri 11/21/25	Mon 12/8/25																	
277		31A - Site Demolition, Grading, Erosion Control, and Water Utilities	253 days	Wed 6/4/25	Fri 6/5/26																	
278		Erosion Control, LOD Staking	10 days	Wed 6/4/25	Tue 6/17/25																	
279		Install silt fence and tree protection	10 days	Wed 6/18/25	Tue 7/1/25																	
280		Clearing for Power Easement	10 days	Wed 7/2/25	Wed 7/16/25																	
281		Range 1 Building Pad & Range 1	10 days	Wed 1/14/26	Tue 1/27/26																	
282		Range 2 Building Pad & Range 2	10 days	Tue 12/30/25	Tue 1/13/26																	
283		Long Range berms (2) & shooting position	20 days	Wed 2/25/26	Tue 3/24/26																	
284		Detention Range berm	20 days	Wed 1/28/26	Tue 2/24/26																	
285		Build New Entrance Road	45 days	Thu 7/17/25	Thu 9/18/25																	
286		Clear & Grub & Proofroll Subgrade	20 days	Thu 7/17/25	Wed 8/13/25																	
287		Fill & Grading	20 days	Thu 8/14/25	Thu 9/11/25																	
288		Proofroll & Stone	5 days	Fri 9/12/25	Thu 9/18/25																	
289		Build Inpound/Auction Lot	30 days	Fri 9/19/25	Thu 10/30/25																	
290		Clear & Grub & Proofroll Subgrade	15 days	Fri 9/19/25	Thu 10/9/25																	
291		Fill & Grading	10 days	Fri 10/10/25	Thu 10/23/25																	
292		Proofroll & Stone	5 days	Fri 10/24/25	Thu 10/30/25																	
293		Dumpster Enclosure	17 days	Wed 3/25/26	Fri 4/17/26																	
294		Dumpster enclosure 6x6 post, steel bollards	5 days	Wed 3/25/26	Tue 3/31/26																	
295		Dumpster enclosure slab	5 days	Wed 4/1/26	Wed 4/8/26																	
296		Dumpster enclosure gates/panels	5 days	Thu 4/9/26	Wed 4/15/26																	
297		Paint	2 days	Thu 4/16/26	Fri 4/17/26																	
298		Paving	29 days	Mon 4/27/26	Fri 6/5/26																	
299		Asphalt Binder @ Training Building parking lot	2 days	Mon 4/27/26	Tue 4/28/26																	
300		Asphalt Top Coat @ Training Building Parking Lot	2 days	Tue 6/2/26	Wed 6/3/26																	
301		Striping, Wheelstops & Signage	2 days	Thu 6/4/26	Fri 6/5/26																	
302		Utilities	177 days	Fri 9/19/25	Thu 6/4/26																	
303		Well / Sewer - Sleeves	15 days	Fri 9/19/25	Thu 10/9/25																	
304		Water Piping from 5' outside building to well	10 days	Wed 2/4/26	Tue 2/17/26																	
305		New Well	5 days	Wed 2/18/26	Tue 2/24/26																	
306		Install Septic System	10 days	Fri 10/10/25	Thu 10/23/25																	
307		Sanitary Sewer Piping	5 days	Fri 10/10/25	Thu 10/16/25																	
308		Storm water piping associated with building parking lot and entrance	15 days	Fri 3/13/26	Thu 4/2/26																	
309		Storm water piping associated with the area around flag pole	5 days	Tue 12/30/25	Tue 1/6/26																	
310		Install roof leader piping	10 days	Thu 5/21/26	Thu 6/4/26																	



Project: Durham County Sheriff Date: Thu 3/20/25	Task	Inactive Task	Manual Summary Rollup	External Milestone	Path Driven Successor Summary Task
	Split	Inactive Milestone	Manual Summary	Deadline	Path Driven Successor Normal Task
	Milestone	Inactive Summary	Start-only	Path Driving Predecessor Milestone Task	Path Driven Successor Milestone Task
	Summary	Manual Task	Finish-only	Path Driving Predecessor Summary Task	Progress
	Project Summary	Duration-only	External Tasks	Path Driving Predecessor Normal Task	Manual Progress

ID	Task Mode	Task Name	Duration	Start	Finish	2nd Half Qtr 3	Qtr 4	1st Half Qtr 1	Qtr 2	2nd Half Qtr 3	Qtr 4	1st Half Qtr 1	Qtr 2	2nd Half Qtr 3	Qtr 4	1st Half Qtr 1	Qtr 2	2nd Half Qtr 3	Qtr 4	1st Half Qtr 1	Qtr 2	
311		32B - Fencing	20 days	Wed 3/25/26	Wed 4/22/26																	
312		8' chain link perimeter fencing	20 days	Wed 3/25/26	Wed 4/22/26																	
313		32C - Final Landscaping	30 days	Fri 6/5/26	Fri 7/17/26																	
314		Plantings	15 days	Fri 6/5/26	Thu 6/25/26																	
315		Chapel Hill gravel paths	15 days	Fri 6/26/26	Fri 7/17/26																	
316		Training Building	340 days	Fri 9/19/25	Wed 1/27/27																	
317		Training Building Substantial Completion	0 days	Wed 1/27/27	Wed 1/27/27																	
318		02A - Existing Conditions/Surveying	106 days	Fri 9/19/25	Mon 2/23/26																	
319		Survey/Staking	2 days	Fri 9/19/25	Mon 9/22/25																	
320		Foundation Survey	2 days	Fri 2/20/26	Mon 2/23/26																	
321		03A - Concrete	52 days	Tue 12/30/25	Thu 3/12/26																	
322		Footings	5 days	Tue 12/30/25	Tue 1/6/26																	
323		Form Slab	5 days	Wed 1/7/26	Tue 1/13/26																	
324		Soil treatment slab	2 days	Wed 2/11/26	Thu 2/12/26																	
325		Slab Prep	5 days	Wed 2/4/26	Tue 2/10/26																	
326		Pour Slab	5 days	Fri 2/13/26	Thu 2/19/26																	
327		Exterior Equipment pads (3)	5 days	Fri 2/20/26	Thu 2/26/26																	
328		Foundation Drainage Stone/Perf Pipe	5 days	Fri 3/6/26	Thu 3/12/26																	
329		05A - Metals	104 days	Tue 2/24/26	Wed 7/22/26																	
330		Structural Steel	8 days	Tue 2/24/26	Thu 3/5/26																	
331		Tube steel associated with roll up doors	3 days	Mon 7/20/26	Wed 7/22/26																	
332		Misc Steel - Bollards related to electrical vehicle charging stations	5 days	Mon 4/20/26	Fri 4/24/26																	
333		06A - Wood Framing	45 days	Fri 3/20/26	Fri 5/22/26																	
334		Wood Framing	20 days	Fri 3/27/26	Fri 4/24/26																	
335		Wood Trusses	5 days	Fri 3/20/26	Thu 3/26/26																	
336		Exterior Wall Sheathing	10 days	Fri 3/20/26	Thu 4/2/26																	
337		Roof Sheathing	5 days	Fri 3/27/26	Thu 4/2/26																	
338		Install Fiber Cement Siding	10 days	Mon 5/11/26	Fri 5/22/26																	
339		06B - Finish Carpentry, Woodwork, Solid Surface Fabrication and Counters	22 days	Fri 9/11/26	Mon 10/12/26																	
340		Install Casework	5 days	Fri 10/2/26	Thu 10/8/26																	
341		Install Counter Tops	2 days	Fri 10/9/26	Mon 10/12/26																	
342		Install Window Sills	2 days	Fri 9/11/26	Mon 9/14/26																	
343		07A - Dampproofing, Air Barriers, Sprayed Insulation, Joint Sealants and Foundation Drain	35 days	Fri 2/20/26	Fri 4/10/26																	
344		Foundation Dampproofing	5 days	Fri 2/20/26	Thu 2/26/26																	
345		Foundation Insulation	5 days	Fri 2/27/26	Thu 3/5/26																	
346		Fluid Applied Air Barrier	5 days	Mon 4/6/26	Fri 4/10/26																	
347		07B - Metal Roofing, Roof Specialties and Sealants	40 days	Mon 4/6/26	Mon 6/1/26																	
348		Metal Wall Panels	20 days	Mon 4/13/26	Fri 5/8/26																	
349		Standing Seam Metal Roof	10 days	Mon 4/6/26	Fri 4/17/26																	
350		Building Dry In	0 days	Mon 6/1/26	Mon 6/1/26																	
351		Install gutters and downspouts	5 days	Mon 5/11/26	Fri 5/15/26																	
352		Cast iron downspout boots	3 days	Mon 5/18/26	Wed 5/20/26																	
353		08A - Hollow Metal and Wood Doors, Frames and Hardware	141 days	Fri 3/20/26	Thu 10/8/26																	
354		Install Interior HM Frames	5 days	Mon 4/27/26	Fri 5/1/26																	
355		Install Exterior HM Frames	2 days	Fri 3/20/26	Mon 3/23/26																	
356		Install Exterior Doors/Hardware	5 days	Tue 3/24/26	Mon 3/30/26																	
357		Install Interior Doors/Hardware	5 days	Fri 10/2/26	Thu 10/8/26																	
358		Install Access Doors	5 days	Fri 9/11/26	Thu 9/17/26																	
359		Install Metal Louver	2 days	Mon 5/11/26	Tue 5/12/26																	

Project: Durham County Sheriff
Date: Thu 3/20/25

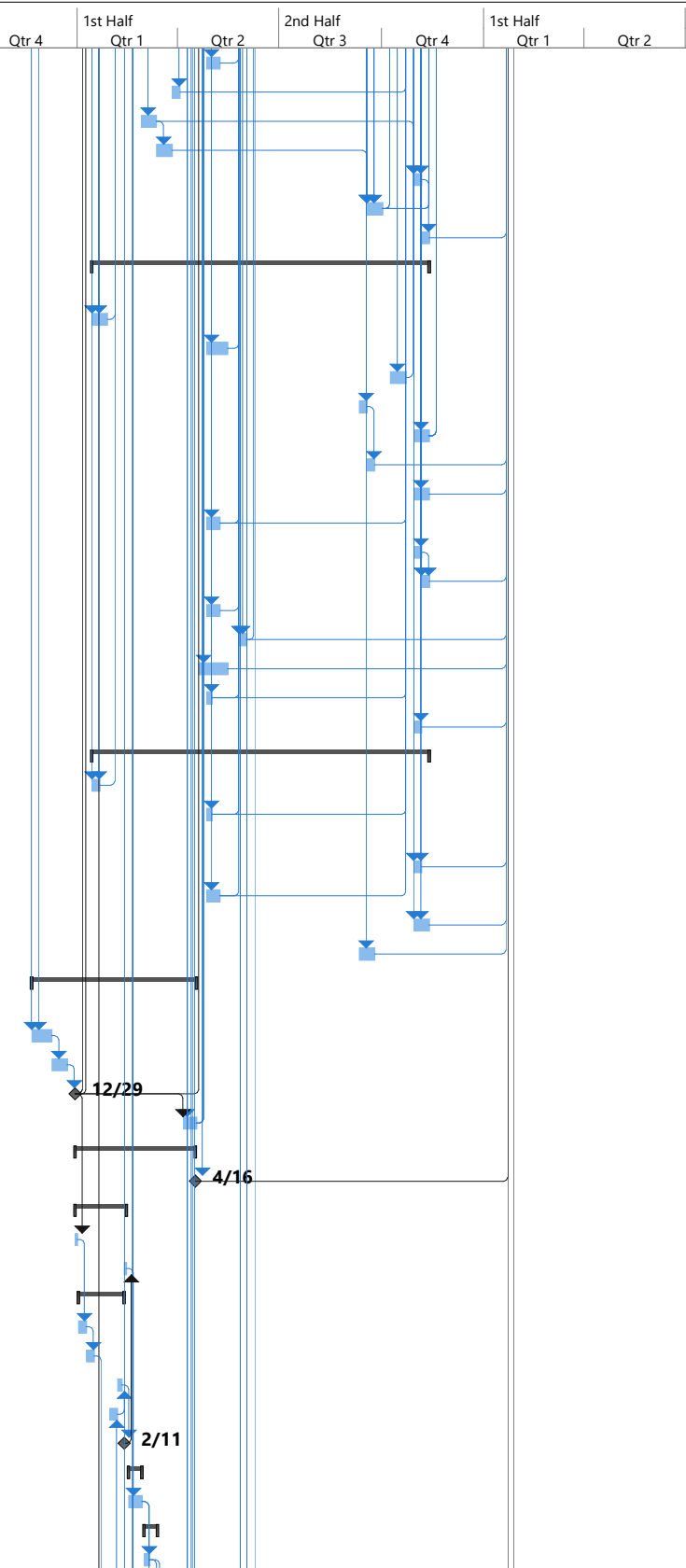
Task		Inactive Task		Manual Summary Rollup		External Milestone		Path Driven Successor Summary Task
Split		Inactive Milestone		Manual Summary		Deadline		Path Driven Successor Normal Task
Milestone		Inactive Summary		Start-only		Path Driving Predecessor Milestone Task		Path Driven Successor Milestone Task
Summary		Manual Task		Finish-only		Path Driving Predecessor Summary Task		Progress
Project Summary		Duration-only		External Tasks		Path Driving Predecessor Normal Task		Manual Progress

ID	Task Mode	Task Name	Duration	Start	Finish	2nd Half Qtr 3	Qtr 4	1st Half Qtr 1	Qtr 2	2nd Half Qtr 3	Qtr 4	1st Half Qtr 1	Qtr 2	2nd Half Qtr 3	Qtr 4	1st Half Qtr 1	Qtr 2	2nd Half Qtr 3	Qtr 4	1st Half Qtr 1	Qtr 2
360		08B - Section Doors	5 days	Fri 9/11/26	Thu 9/17/26																
361		Sectional interior door	5 days	Fri 9/11/26	Thu 9/17/26																
362		Sectional Exterior Door	5 days	Fri 9/11/26	Thu 9/17/26																
363		08C - Aluminum Storefront and Glazing	15 days	Mon 5/11/26	Mon 6/1/26																
364		Install Storefront	5 days	Tue 5/26/26	Mon 6/1/26																
365		Install Storefront Glass	5 days	Mon 5/11/26	Fri 5/15/26																
366		09A - Gypsum Board Assemblies and Insulation	121 days	Fri 3/6/26	Wed 8/26/26																
367		Active Training Room	15 days	Tue 6/2/26	Mon 6/22/26																
368		Install Sound Batt Insulation	5 days	Tue 6/2/26	Mon 6/8/26																
369		Hang Drywall	5 days	Tue 6/9/26	Mon 6/15/26																
370		Finish Drywall	5 days	Tue 6/16/26	Mon 6/22/26																
371		Metal Framing	10 days	Fri 3/6/26	Thu 3/19/26																
372		Install Sound Batt Insulation	5 days	Tue 5/26/26	Mon 6/1/26																
373		Hang Drywall	10 days	Thu 7/23/26	Wed 8/5/26																
374		Finish Drywall	15 days	Thu 8/6/26	Wed 8/26/26																
375		09B - Ceramic Tile	20 days	Fri 11/13/26	Mon 12/14/26																
376		Ceramic Tile	20 days	Fri 11/13/26	Mon 12/14/26																
377		09C - Acoustical Ceilings	10 days	Fri 10/23/26	Thu 11/5/26																
378		Acoustical Ceiling Grid	5 days	Fri 10/23/26	Thu 10/29/26																
379		Acoustical Ceiling Tile	5 days	Fri 10/30/26	Thu 11/5/26																
380		09D - Cork and Resilient Flooring	12 days	Fri 11/13/26	Wed 12/2/26																
381		Install Cork Flooring and others	10 days	Fri 11/13/26	Mon 11/30/26																
382		Install Base	2 days	Tue 12/1/26	Wed 12/2/26																
383		09E - Fluid Applied Flooring	5 days	Fri 11/13/26	Thu 11/19/26																
384		Flooring Install	5 days	Fri 11/13/26	Thu 11/19/26																
385		09F - Exterior and Interior Painting	86 days	Tue 6/2/26	Thu 10/1/26																
386		Exterior paint and stain	20 days	Tue 6/2/26	Mon 6/29/26																
387		Prime Paint	10 days	Thu 8/27/26	Thu 9/10/26																
388		Final Paint	10 days	Fri 9/18/26	Thu 10/1/26																
389		10A - Specialties	80 days	Fri 9/11/26	Wed 1/6/27																
390		Install Marker/Tackboards	5 days	Fri 9/11/26	Thu 9/17/26																
391		Install Toilet Partitions	10 days	Tue 12/15/26	Wed 12/30/26																
392		Install Toilet Accessories	5 days	Thu 12/31/26	Wed 1/6/27																
393		Install FEC/FE	2 days	Fri 9/11/26	Mon 9/14/26																
394		10B - Signage	2 days	Fri 9/11/26	Mon 9/14/26																
395		Install Signage	2 days	Fri 9/11/26	Mon 9/14/26																
396		11A - Shooting Range Equipment	10 days	Tue 12/1/26	Mon 12/14/26																
397		Install Gun Safe	2 days	Tue 12/1/26	Wed 12/2/26																
398		Gladiator storage system	10 days	Tue 12/1/26	Mon 12/14/26																
399		Install Gun Cleaning Equipment	5 days	Tue 12/1/26	Mon 12/7/26																
400		12A - Window Treatments	5 days	Fri 10/2/26	Thu 10/8/26																
401		Install Window Blinds/Shades	5 days	Fri 10/2/26	Thu 10/8/26																
402		22A - Plumbing and Solar Hot Water Systems	310 days	Fri 10/24/25	Wed 1/20/27																
403		Underground Rough In to 5' outside building	15 days	Wed 1/14/26	Tue 2/3/26																
404		Water/Sewer Tie In	5 days	Fri 10/24/25	Thu 10/30/25																
405		Wall Rough Ins	20 days	Mon 4/27/26	Fri 5/22/26																
406		Overhead Rough Ins	10 days	Tue 5/26/26	Mon 6/8/26																
407		Pipe Insulation	5 days	Tue 6/9/26	Mon 6/15/26																
408		Solar Water Heater	15 days	Fri 9/11/26	Thu 10/1/26																
409		Trimout	10 days	Thu 1/7/27	Wed 1/20/27																
410		23A - HVAC	181 days	Fri 2/27/26	Thu 11/12/26																
411		Active Training Room - Ceiling Equipment	5 days	Tue 6/23/26	Mon 6/29/26																

Project: Durham County Sheriff
Date: Thu 3/20/25

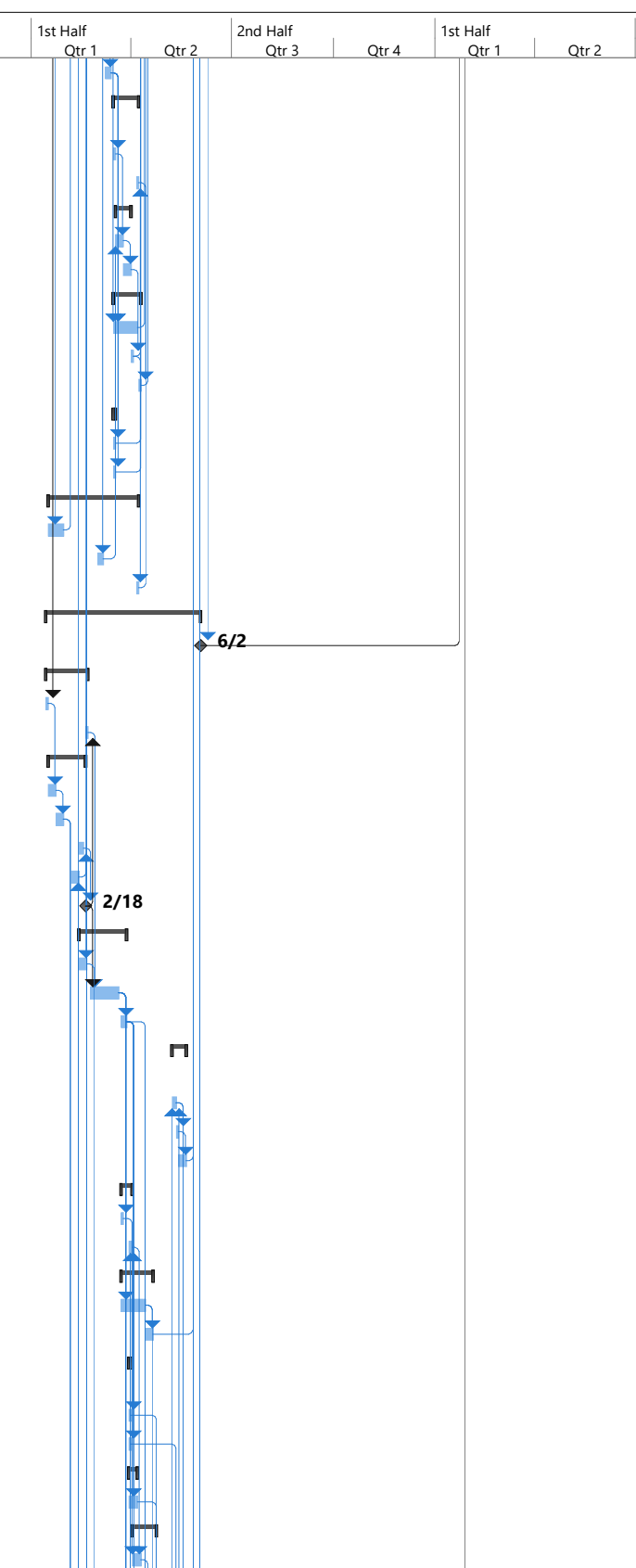
Task		Inactive Task		Manual Summary Rollup		External Milestone		Path Driven Successor Summary Task	
Split		Inactive Milestone		Manual Summary		Deadline		Path Driven Successor Normal Task	
Milestone		Inactive Summary		Start-only		Path Driving Predecessor Milestone Task		Path Driven Successor Milestone Task	
Summary		Manual Task		Finish-only		Path Driving Predecessor Summary Task		Progress	
Project Summary		Duration-only		External Tasks		Path Driving Predecessor Normal Task		Manual Progress	

ID	Task Mode	Task Name	Duration	Start	Finish	2nd Half		1st Half		2nd Half		1st Half		2nd Half		1st Half		2nd Half		1st Half	
						Qtr 3	Qtr 4	Qtr 1	Qtr 2	Qtr 3	Qtr 4	Qtr 1	Qtr 2	Qtr 3	Qtr 4	Qtr 1	Qtr 2	Qtr 3	Qtr 4	Qtr 1	Qtr 2
412		HVAC Rough In	10 days	Mon 4/27/26	Fri 5/8/26																
413		Overhead Rough Ins	5 days	Fri 3/27/26	Thu 4/2/26																
414		Install Equipment	10 days	Fri 2/27/26	Thu 3/12/26																
415		Controls	10 days	Fri 3/13/26	Thu 3/26/26																
416		Trimout	5 days	Fri 10/30/26	Thu 11/5/26																
417		Start Up	10 days	Fri 9/18/26	Thu 10/1/26																
418		TAB & Commissioning	5 days	Fri 11/6/26	Thu 11/12/26																
419		26A - Electrical, PV Panels Communications and Fire Alarm	213 days	Wed 1/14/26	Thu 11/12/26																
420		Underground RI	10 days	Wed 1/14/26	Tue 1/27/26																
421		In Wall Rough In	15 days	Mon 4/27/26	Fri 5/15/26																
422		Overhead Rough In	10 days	Fri 10/9/26	Thu 10/22/26																
423		Install Gear	5 days	Fri 9/11/26	Thu 9/17/26																
424		Install Light Fixtures	10 days	Fri 10/30/26	Thu 11/12/26																
425		Permanent Power	5 days	Fri 9/18/26	Thu 9/24/26																
426		Trimout	10 days	Fri 10/30/26	Thu 11/12/26																
427		Fire Alarm Rough In	10 days	Mon 4/27/26	Fri 5/8/26																
428		Fire Alarm Trimout	5 days	Fri 10/30/26	Thu 11/5/26																
429		Fire Alarm Testing	5 days	Fri 11/6/26	Thu 11/12/26																
430		Solar Rough In	10 days	Mon 4/27/26	Fri 5/8/26																
431		Install electrical vehicle charging stations	5 days	Tue 5/26/26	Mon 6/1/26																
432		Solar Panel Install	20 days	Mon 4/20/26	Fri 5/15/26																
433		Low Voltage Rough In	5 days	Mon 4/27/26	Fri 5/1/26																
434		Low Voltage Trimout	5 days	Fri 10/30/26	Thu 11/5/26																
435		28A - Access Control and Security	213 days	Wed 1/14/26	Thu 11/12/26																
436		Underground RI	5 days	Wed 1/14/26	Tue 1/20/26																
437		Security Rough In - card readers, cameras, access control	5 days	Mon 4/27/26	Fri 5/1/26																
438		Security Trimout	5 days	Fri 10/30/26	Thu 11/5/26																
439		A/V Rough In	10 days	Mon 4/27/26	Fri 5/8/26																
440		A/V Trimout	10 days	Fri 10/30/26	Thu 11/12/26																
441		Install Commercial Grade TV's	10 days	Fri 9/11/26	Thu 9/24/26																
442		31A - Site Demolition, Grading, Erosion Control, and Water Utilities	99 days	Fri 11/21/25	Fri 4/17/26																
443		Sub grade proof roll for building pad	10 days	Fri 11/21/25	Mon 12/8/25																
444		Fill building pad	10 days	Tue 12/9/25	Mon 12/22/25																
445		Final proof roll	2 days	Tue 12/23/25	Mon 12/29/25																
446		Parking lot rough grading	10 days	Mon 4/6/26	Fri 4/17/26																
447		Range 1 Shed	76 days	Tue 12/30/25	Thu 4/16/26																
448		Range 1 Shed Substantial Completion	0 days	Thu 4/16/26	Thu 4/16/26																
449		02A - Existing Conditions/Surveying	33 days	Tue 12/30/25	Fri 2/13/26																
450		Survey/Staking	2 days	Tue 12/30/25	Wed 12/31/25																
451		Foundation Survey	2 days	Thu 2/12/26	Fri 2/13/26																
452		03A - Concrete	29 days	Fri 1/2/26	Wed 2/11/26																
453		Footings	5 days	Fri 1/2/26	Thu 1/8/26																
454		Form	5 days	Fri 1/9/26	Thu 1/15/26																
455		Soil treatment	2 days	Fri 2/6/26	Mon 2/9/26																
456		Slab Prep	5 days	Fri 1/30/26	Thu 2/5/26																
457		Slab	2 days	Tue 2/10/26	Wed 2/11/26																
458		06A - Wood Framing	10 days	Mon 2/16/26	Fri 2/27/26																
459		Wood Framing & Roof Sheathing	10 days	Mon 2/16/26	Fri 2/27/26																
460		07B - Metal Roofing, Roof Specialties and Sealants	10 days	Mon 3/2/26	Fri 3/13/26																
461		Install Metal Roofing	5 days	Mon 3/2/26	Fri 3/6/26																



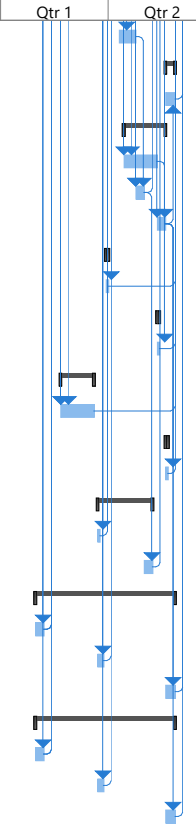
Project: Durham County Sheriff Date: Thu 3/20/25	Task		Inactive Task		Manual Summary Rollup		External Milestone		Path Driven Successor Summary Task
	Split		Inactive Milestone		Manual Summary		Deadline		Path Driven Successor Normal Task
	Milestone		Inactive Summary		Start-only		Path Driving Predecessor Milestone Task		Path Driven Successor Milestone Task
	Summary		Manual Task		Finish-only		Path Driving Predecessor Summary Task		Progress
	Project Summary		Duration-only		External Tasks		Path Driving Predecessor Normal Task		Manual Progress

ID	Task Mode	Task Name	Duration	Start	Finish	2nd Half		1st Half		2nd Half		1st Half		2nd Half		1st Half		2nd Half		1st Half	
						Qtr 3	Qtr 4	Qtr 1	Qtr 2	Qtr 3	Qtr 4	Qtr 1	Qtr 2	Qtr 3	Qtr 4	Qtr 1	Qtr 2	Qtr 3	Qtr 4	Qtr 1	Qtr 2
462		Install Metal Wall Panels	5 days	Mon 3/9/26	Fri 3/13/26																
463		08A - Hollow Metal and Wood Doors, Frames and Hardware	16 days	Mon 3/16/26	Tue 4/7/26																
464		Install HM Frames	2 days	Mon 3/16/26	Tue 3/17/26																
465		Install Doors/Hardware	2 days	Mon 4/6/26	Tue 4/7/26																
466		09A - Gypsum Board Assemblies and Insulation	10 days	Wed 3/18/26	Tue 3/31/26																
467		Hang Drywall	5 days	Wed 3/18/26	Tue 3/24/26																
468		Finish Drywall	5 days	Wed 3/25/26	Tue 3/31/26																
469		09F - Exterior and Interior Painting	18 days	Mon 3/16/26	Thu 4/9/26																
470		Exterior Painting and Stain	15 days	Mon 3/16/26	Mon 4/6/26																
471		Prime Painting	2 days	Wed 4/1/26	Thu 4/2/26																
472		Final Painting	2 days	Wed 4/8/26	Thu 4/9/26																
473		10A - Specialties	2 days	Mon 3/16/26	Tue 3/17/26																
474		Install Display Case	2 days	Mon 3/16/26	Tue 3/17/26																
475		Install FEC/FE	2 days	Mon 3/16/26	Tue 3/17/26																
476		26A - Electrical	57 days	Fri 1/16/26	Tue 4/7/26																
477		UG Rough in	10 days	Fri 1/16/26	Thu 1/29/26																
478		Rough In	5 days	Mon 3/2/26	Fri 3/6/26																
479		Trimout	2 days	Mon 4/6/26	Tue 4/7/26																
480		Range 2 Tower / Shelter Area	98 days	Wed 1/14/26	Tue 6/2/26																
481		Range 2 Tower/Shelter Area Substantial Completion	0 days	Tue 6/2/26	Tue 6/2/26																
482		02A - Existing Conditions / Surveying	28 days	Wed 1/14/26	Fri 2/20/26																
483		Survey/Staking	2 days	Wed 1/14/26	Thu 1/15/26																
484		Foundation Survey	2 days	Thu 2/19/26	Fri 2/20/26																
485		03A - Concrete	24 days	Fri 1/16/26	Wed 2/18/26																
486		Footings	5 days	Fri 1/16/26	Thu 1/22/26																
487		Form	5 days	Fri 1/23/26	Thu 1/29/26																
488		Soil treatment	2 days	Fri 2/13/26	Mon 2/16/26																
489		Slab Prep	5 days	Fri 2/6/26	Thu 2/12/26																
490		Slab	2 days	Tue 2/17/26	Wed 2/18/26																
491		06A - Woods & Plastics	31 days	Fri 2/13/26	Fri 3/27/26																
492		Range 2 knee wall	5 days	Fri 2/13/26	Thu 2/19/26																
493		Wood Framing & Roof Sheathing	20 days	Mon 2/23/26	Fri 3/20/26																
494		Install corrugated metal panel siding	5 days	Mon 3/23/26	Fri 3/27/26																
495		06B - Finish Carpentry, Woodwork, Solid Surface Fabrication and Counters	9 days	Fri 5/8/26	Wed 5/20/26																
496		Install Casework	2 days	Fri 5/8/26	Mon 5/11/26																
497		Install Ctops	2 days	Tue 5/12/26	Wed 5/13/26																
498		Install Trim	5 days	Thu 5/14/26	Wed 5/20/26																
499		07A - Thermal & Moisture Protection	8 days	Mon 3/23/26	Wed 4/1/26																
500		Spray Foam Insulation under floor sheathing	2 days	Mon 3/23/26	Tue 3/24/26																
501		Wall insulation	3 days	Mon 3/30/26	Wed 4/1/26																
502		07B Metal Roofing, Roof Specialtie, Sealants	20 days	Mon 3/23/26	Mon 4/20/26																
503		Install Metal Roofing	15 days	Mon 3/23/26	Mon 4/13/26																
504		Install gutters and downspouts	5 days	Tue 4/14/26	Mon 4/20/26																
505		08A - Hollow Metal and Wood Doors, Frames and Hardware	2 days	Mon 3/30/26	Tue 3/31/26																
506		Install HM Frames	2 days	Mon 3/30/26	Tue 3/31/26																
507		Install Doors/Hardware	2 days	Mon 3/30/26	Tue 3/31/26																
508		08C - Aluminum Storefront and Glazing	5 days	Mon 3/30/26	Mon 4/6/26																
509		Install Storefront & Glass	5 days	Mon 3/30/26	Mon 4/6/26																
510		09A - Gypsum oard Assemblies and Insulation	15 days	Thu 4/2/26	Thu 4/23/26																
511		Hang Drywall	5 days	Thu 4/2/26	Thu 4/9/26																



Project: Durham County Sheriff Date: Thu 3/20/25	Task		Inactive Task		Manual Summary Rollup		External Milestone		Path Driven Successor Summary Task
	Split		Inactive Milestone		Manual Summary		Deadline		Path Driven Successor Normal Task
	Milestone		Inactive Summary		Start-only		Path Driving Predecessor Milestone Task		Path Driven Successor Milestone Task
	Summary		Manual Task		Finish-only		Path Driving Predecessor Summary Task		Progress
	Project Summary		Duration-only		External Tasks		Path Driving Predecessor Normal Task		Manual Progress

ID	Task Mode	Task Name	Duration	Start	Finish	2nd Half		1st Half		2nd Half		1st Half		2nd Half		1st Half		2nd Half		1st Half	
						Qtr 3	Qtr 4	Qtr 1	Qtr 2	Qtr 3	Qtr 4	Qtr 1	Qtr 2	Qtr 3	Qtr 4	Qtr 1	Qtr 2	Qtr 3	Qtr 4	Qtr 1	Qtr 2
512		Finish Drywall	10 days	Fri 4/10/26	Thu 4/23/26																
513		09D - Cork and Resilient Flooring	5 days	Tue 5/19/26	Tue 5/26/26																
514		Flooring	5 days	Tue 5/19/26	Tue 5/26/26																
515		09F - Exterior and Interior Paint	25 days	Tue 4/14/26	Mon 5/18/26																
516		Exterior paint and stain	20 days	Tue 4/14/26	Mon 5/11/26																
517		Prime Paint	5 days	Fri 4/24/26	Thu 4/30/26																
518		Final Paint	5 days	Tue 5/12/26	Mon 5/18/26																
519		10A - Specialties	2 days	Mon 3/30/26	Tue 3/31/26																
520		Install FEC/FE	2 days	Mon 3/30/26	Tue 3/31/26																
521		10B - Signage	2 days	Tue 5/12/26	Wed 5/13/26																
522		Signage	2 days	Tue 5/12/26	Wed 5/13/26																
523		11A Shooting Range Equipment	20 days	Fri 2/20/26	Thu 3/19/26																
524		Install Shooting Range Equipment & Bullet Trap	20 days	Fri 2/20/26	Thu 3/19/26																
525		12A Window Treatments	2 days	Tue 5/19/26	Wed 5/20/26																
526		Window treatments	2 days	Tue 5/19/26	Wed 5/20/26																
527		23A - HVAC	33 days	Mon 3/23/26	Thu 5/7/26																
528		T stat in wall rough in	2 days	Mon 3/23/26	Tue 3/24/26																
529		Install PTAC	5 days	Fri 5/1/26	Thu 5/7/26																
530		26A - Electrical	81 days	Fri 1/30/26	Tue 5/26/26																
531		Underground RI	5 days	Fri 1/30/26	Thu 2/5/26																
532		Rough In	5 days	Mon 3/23/26	Fri 3/27/26																
533		Trimout	5 days	Tue 5/19/26	Tue 5/26/26																
534		27A - Communications	81 days	Fri 1/30/26	Tue 5/26/26																
535		Low Voltage Underground Ris	5 days	Fri 1/30/26	Thu 2/5/26																
536		Low Voltage RI	5 days	Mon 3/23/26	Fri 3/27/26																
537		Low Voltage Trimout	5 days	Tue 5/19/26	Tue 5/26/26																



Project: Durham County Sheriff Date: Thu 3/20/25	Task		Inactive Task		Manual Summary Rollup		External Milestone		Path Driven Successor Summary Task	
	Split		Inactive Milestone		Manual Summary		Deadline		Path Driven Successor Normal Task	
	Milestone		Inactive Summary		Start-only		Path Driving Predecessor Milestone Task		Path Driven Successor Milestone Task	
	Summary		Manual Task		Finish-only		Path Driving Predecessor Summary Task		Progress	
	Project Summary		Duration-only		External Tasks		Path Driving Predecessor Normal Task		Manual Progress	

Client Name: _____ Date: _____
 Address: _____ Proposal No: _____
 _____ Project Name: _____
 Client Contact: _____ Project Location: _____
 Phone: _____ Summit Contact: _____
 Phone: _____
 Email: _____ Email: _____

Client AP Information:

Name: _____ Phone: _____ Email: _____

Description of Work (Referred to herein as the "Services" or "Scope of Services"):

Check this box if the Services to be provided by Summit include geotechnical engineering services, including subsurface exploration, geotechnical testing, or geotechnical evaluation. If so, the terms and conditions entitled "Geotechnical Terms and Conditions" shall apply in addition to those set forth herein.

This contract, including all incorporated documents, is referred to herein as the "Agreement".

Fee Schedule: (check all applicable)

- Fixed Fee Amount: _____
- Hourly Billable Rates (as attached)
- Not to Exceed: _____

Expenses and/or outside services will be billed at 1.15 times our direct cost and are not included in the fee schedule options shown above.

Payment Conditions: Summit reserves the right to stop work for non-payment. Invoices must be paid in full before final documents are submitted. All other Conditions as elected below:

- Client shall pay to Summit a retainer in the amount of \$ _____ as a condition precedent to Summit's performance of the services under this Agreement. The full amount of the retainer shall be applied to Client's final invoice.
- To be billed upon completion with payment due upon receipt
- To be billed monthly with payment due upon receipt

By signing this Agreement, you are consenting to the Terms and Conditions set forth herein below. Please retain a copy for yourself and return the signed Original to Summit Design and Engineering Services, Inc.

Client: _____ Summit Design and Engineering Services, Inc.
 Address: _____ Address: 320 Executive Court

 City, State: _____ City, State: Hillsborough, North Carolina

By: _____ By: _____
 Its: _____ Its: _____

Signed: _____ Signed: _____
 Date: _____ Date: _____

Article I. CLIENT'S RESPONSIBILITIES

A) Client's Representative: Client shall appoint a representative authorized to act on the Client's behalf with respect to the Project. The Client or its representative shall make decisions in a timely manner regarding all aspects of the Project, shall examine documents submitted by Summit and render decisions in a timely manner to avoid unreasonable delay in the orderly and sequential progress of Summit's services and the Project schedule accepted by Client.

B) Client's Program & Budget Requirements: Client shall provide Summit full information in a timely manner regarding all its requirements for the Project including its objectives, schedule, criteria, constraints and budget including reasonable contingencies.

C) Right of Entry: Client shall provide right of entry for Summit, its staff, subconsultants, and all necessary equipment to complete the Services. Summit will take reasonable precautions to minimize damage to property. Client understands that in the normal course of performing the Services some damage may occur, the correction of which is not part of this Agreement.

D) Required Information: Client will furnish Summit all information, requirements, data, reports, surveys and instructions required to complete the Scope of Services, including identifying the type and location of underground improvements and utilities, and all existing conditions. Summit shall have the right to rely upon the completeness and accuracy of such information. Client acknowledges that certain assumptions will be made regarding existing conditions that cannot be verified without destruction or damage to existing facilities. To the fullest extent permitted by law, Client agrees to waive all claims against, and to hold harmless and indemnify, Summit and its subconsultants, for damages to underground improvements and utilities and for any costs associated with undisclosed existing conditions.

E) Invoices: Summit will render invoices every thirty days. Payment is due upon Client's receipt of each invoice and is past due thirty (30) days from the invoice date. Client agrees to pay a service charge of one and one half percent (1½%) per month, or the maximum rate allowed by law, on past due accounts. Payments will be credited first to interest and then to principal. Payment of invoices shall not be subject to any discounts, set-offs, or backcharges by Client unless agreed to in writing by Summit. Client shall pay all costs, expenses, and distributions, including collection agency fees and expenses, court costs and reasonable attorneys' fees incurred by Summit, in the event collection or legal processes are employed to collect outstanding bills.

F) Sales Tax: Client will pay any applicable sales tax whenever deemed to be due. Payment terms are exclusive of sales tax.

G) Non-Solicitation: During the course of this Agreement and one year thereafter, the Client shall not solicit for employment, nor employ, hire or promote the voluntary termination of any Summit Employee.

H) Additional Services: For additional services of Summit's employees, Client shall pay Summit an amount equal to the cumulative hours charged by each employee for the additional services times his/her standard hourly rate, plus reimbursable expenses.

I) Expenses: Reimbursable expenses shall be paid by Client if applicable and will be included in Summit's invoice. Reimbursable expenses are defined as the expenses incurred directly by Summit in connection with the furnishing of Services hereunder and typically include, but are not limited to: items not normally provided in the day to day processing of work, permit fees, courier charges, reproduction fees, special project related fees including documents, submittals, special project management services, special travel, and/or any special charges or specialized equipment, all typically supplied by third party outside sources.

Article II. SUMMIT'S RESPONSIBILITIES

A) Standard of Care: For any professional services rendered under this Agreement, Summit shall adhere to the level of care and skill ordinarily exercised by members of the same profession practicing under similar conditions at the same time and in the same locality. Summit makes no other warranties, expressed or implied, with respect to this Agreement, Summit's Services, or the Design Documents. Client acknowledges that increased costs and changes may be required due to omission, ambiguities and inconsistencies in the drawings and specifications. Client agrees to set aside a contingency of at least 3% of the Project construction cost to pay for these costs and changes. Client further agrees it will make no claims against Summit for any such costs and changes covered by such contingency fund.

B) Compliance with Laws and Codes: Consistent with the standard of care, Summit will comply with laws and codes applicable to the Project as of, the latter of, the effective date of this Agreement or the issuance of construction plans and specifications.

C) Certifications: Summit shall sign, if requested by Client and included in the Scope of Services, a statement that to the best of its knowledge, information and belief, based in whole or in part on information provided by others, the accuracy of which has not been verified, that the Project has been completed in general conformance with the plans and specifications. Summit shall not be required to sign any documents, no matter by whom requested, in which Summit is required to certify, guarantee, or warrant the existence of conditions which Summit has not or cannot ascertain. Summit neither guarantees the performance of any contractor nor assumes responsibilities for any contractor's failure to furnish and perform its work in accordance with the contract between the Client and any such contractor or the Project plans and specifications. Summit is not responsible for variations between actual construction bids or costs and Summit's opinions or estimates regarding construction costs; nor does Summit guarantee, warrant, or represent that proposals, bids, or actual construction costs will not vary from opinions of probably construction costs prepared by Summit.

D) Construction Phase Services: If construction phase services are required in the Scope of Services, the following terms shall apply if they are likewise required in the Scope of Services (the term "Contractor" refers to any person(s) or entity(ies) that performs the actual construction of the Project or provide labor, equipment, or materials for the construction of the Project):

1) Site Observation: If Project site observation visits are to be provided by Summit, Summit shall visit the site at intervals appropriate to the stage of the construction, or as otherwise expressly agreed to in the Scope of Services, in order to observe the progress and quality of the work completed by the contractor. Such observation is not meant to be an exhaustive check or a detailed inspection of the contractor's work but rather to allow Summit to become generally familiar with the progress of the construction work and to determine in general if the work is being performed in a manner indicating that, when fully completed, the work will be in accordance with the Project plans and specifications. Summit shall not be required to make continuous or exhaustive inspections to check the quantity and quality of the construction work nor shall Summit be responsible for the Contractor's failure to perform the construction work in accordance with the Project plans and specifications.

2) **Work Site Safety:** Client agrees that Summit shall not supervise or direct, or have any responsibility for, control over or charge of, the Contractors' work or the construction means, methods, techniques, sequences or procedures, or for the work site safety precautions or programs in connection with the construction work. These rights and responsibilities are solely those of the party or parties performing the actual construction of the Project. Neither the professional activities of Summit, nor the presence of Summit personnel and subconsultants at the construction site, shall relieve the Contractors and any other entity of their obligations, duties and responsibilities including, but not limited to, construction means, methods, sequence, techniques or procedures necessary for performing, superintending or coordinating all portions of the construction work safely and in accordance with any health or safety requirements of any regulatory agency. The Client agrees that the Client, Summit and Summit's subconsultants (and their officers, directors, employees, and agents) shall be included as indemnitees in any indemnification provisions in the Client/Contractor contract for the Project and that Summit and Summit's subconsultants (and their officers, directors, employees, and agents) shall be made additional insureds under the Contractors' general, umbrella and excess liability insurance policies.

3) **Submittals & Shop Drawings:** If the Services include the review of Contractor submittals and shop drawings, then Summit will review such submittals and shop drawings for the limited purpose of checking for conformance with the design concept expressed and the information provided in the Project construction contract, plans, and specifications. This review shall not include review of the accuracy or completeness of details, such as quantities, dimensions, weights or gauges, fabrication processes, construction means or methods, coordination of the work with other trades or construction safety precautions, all of which are the responsibility of the Contractors. The review shall be conducted with reasonable promptness while allowing sufficient time in Summit's judgment to permit adequate review. Review of a specific item shall not indicate that Summit has reviewed the entire assembly of which the item is a component. Summit shall not be responsible for any deviations from the Project construction contract, plans, or specifications not brought to its attention in writing by the Contractor. Summit shall not be required to review partial submissions or those for which submissions of correlated items have not been received.

4) **Requests for Clarification or Interpretation:** Summit shall provide, with reasonable promptness, written responses to requests from Contractors for clarification and interpretation of the requirements of the Project plans, specifications, and other documents prepared by Summit or its subconsultants for the Project. If such requests for information, clarification or interpretation are, in Summit's professional opinion, for information readily apparent from reasonable observation of field conditions or a review of the Project plans, specifications, and other documents prepared by Summit or its subconsultants, or reasonably inferable therefrom, Summit shall be entitled to additional compensation at its regular billing rates for its time spent responding to such requests.

5) **Record Documents:** If required by the Scope of Services, upon completion of the construction of the Project, Summit shall compile for and deliver to the Client a reproducible set of Record Documents conforming to the marked-up prints, drawings and other data furnished to Summit by the Contractor. This set of Record Documents will show significant changes made during construction. Because these Record Documents are based on unverified information provided by other parties that Summit will assume to be reliable, Summit cannot and does not warrant their accuracy.

E) **Insurance:** Summit shall maintain worker's compensation insurance required by law. Summit represents and warrants that it maintains general liability and property damage insurance. Certificates for such policies shall be provided to Client upon written request. Client shall maintain at its own cost and expense, its own general liability and property damage insurance. Client and Summit waive all rights against each other and Summit's subconsultants, agents and employees for losses or damages caused by any peril to the extent covered by the property insurance maintained by Client, except to the extent such proceeds are held by Client as trustee. Upon the later of the execution of this Agreement or obtaining the policies of insurance required hereunder, the Parties shall give notice to the insurance carrier or carriers that the foregoing mutual waiver of subrogation is contained in this Agreement. This waiver of subrogation shall be effective as to a person or entity even though that person or entity would otherwise have a duty of indemnification, contractual or otherwise, did not pay the insurance premium directly or indirectly, and whether or not the person or entity had an insurable interest in the property damaged.

Article III. General Legal Provisions

A) **Ownership of Documents:** Drawings, specifications, and all other documents prepared by Summit or its subconsultants, including those in electronic form (collectively "Design Documents") are instruments of service. Summit shall retain all common law, statutory, property, and other reserved rights in the Design Documents, including copyright and the right of reuse. The Design Documents, including those in electronic form are furnished for use solely with respect to this Agreement. Effective only upon receipt by Summit of full payment for all its Services provided hereunder, Summit hereby grants Client a license to use all such rights to the extent necessary to enable the Client to make reasonable use of the Design Documents and the Services. Client is permitted to retain copies of the Design Documents, including those in electronic form, for information and reference in connection with the Project. Client shall not use the Design Documents, including those in electronic form furnished by Summit or its subconsultants on other projects, for additions to this Project, or for the completion of this Project by others, without the express written consent of Summit. Any reuse without written consent shall be at Client's risk and full legal responsibility.

B) **Intellectual Property Indemnity:** Client agrees to hold harmless and indemnify Summit and its subconsultants, agents, and employees from any and all claims, suits, demands, damages, liabilities, and costs, including reasonable attorney fees, arising from any reuse of the Design Documents.

C) **Release of Liability for Use of Electronic Files:** In the event that Summit releases uncertified electronic files associated with this Agreement, Client acknowledges that such files may not be certified documents, nor should such be considered Design Documents. In such event, Summit reserves the right to remove all indicia of ownership or involvement from the files and to the fullest extent permitted by law, makes no representation or warranty, regarding their accuracy, title, non-infringement, completeness, or permanence, nor their merchantability, fitness for another process, compatibility with hardware or software, or their modification or conversion into another format. Accordingly, Client assumes all risk and liability for any loss, damage, claim, or expense from their use, possession, or receipt of such files. Client agrees to pay Summit any reasonable fees associated with the transfer or reproduction of such files.

D) **Retention of Documents:** Summit will retain, pursuant to its usual document retention policy, records relating to the Work. During this period, records will be made available to the Client at Summit's offices during normal business hours upon seven (7) day's notice

E) **Asbestos and Hazardous Materials:** Unless otherwise specifically provided in the Scope of Services, Summit and its subconsultants shall have no responsibility for the discovery, presence, handling, removal, or disposal of asbestos or hazardous or toxic materials.

F) Termination & Suspension: This Agreement may be terminated by either party upon seven (7) days written notice in the event of substantial failure by the other party to perform in accordance with the terms hereof. Such termination shall not be effective if the substantial failure is remedied before expiration of the seven (7) days. Client's failure to pay invoices within thirty (30) days shall be deemed a substantial failure to perform. In such event, Summit may terminate this Agreement or immediately suspend the performance of services until such failure has been cured. Summit may also terminate this agreement upon seven (7) days written notice if Client demands that Summit furnish or perform services contrary to Summit's responsibilities as a licensed professional or if Summit's Services are delayed for more than 90 days. Either Party may terminate this Agreement for its convenience upon fourteen (14) days written notice. In the event of a termination for convenience, Client shall pay Summit for all Services performed and reimbursable expenses incurred up to and including the termination effective date plus reasonable expenses incurred by Summit as a result of the termination. Said payment shall be made within ten (10) calendar days of Client's receipt of a final invoice. Summit shall be allowed a reasonable amount of time to demobilize personnel and equipment from the Project regardless of the effective date of termination. In the event the project, or any phase of it is delayed for reasons beyond Summit's control, unbilled work will be invoiced at the standard hourly rates for the actual number of hours expended. Completed phases will be billed at fees quoted herein.

G) Disputes: In an effort to resolve any conflicts that arise during the pendency of the Project or after completion of the Project, all claims, disputes, or other matters in question between the parties to this Agreement that arise out of or relate to this Agreement or the breach thereof shall be submitted to nonbinding mediation before a neutral third-party mediator acceptable to both parties. The cost of the mediator shall be borne equally by the Parties. A demand for mediation shall be made within a reasonable time after the claim, dispute or other matter has arisen. In no event shall such demand be made after the date that applicable statutes of limitation or repose would bar a legal or equitable action based on such claim, dispute or other matter. Such mediation shall be a condition precedent to the commencement of any legal action arising out of this Agreement except those legal proceedings related to Client's failure to pay. In addition, if a claim relates to a materialman's lien, the party asserting such claim may proceed in accordance with applicable law to comply with the lien notice or filing deadlines, notwithstanding anything to the contrary herein. In the event of litigation relating to the sufficiency or adequacy of performance of services called for by this Agreement, should Summit obtain a judgment dismissing Client's action or claim or other resolution wherein Summit is not required to make compensation to Client in excess of Summit's final offer made to Client, whether said offer was made in or after the mediation, Summit shall be entitled to recover all costs incurred in the defense of the claim including staff time, court costs, expert witness fees, and reasonable attorneys' fees, and other claim related expenses.

H) Choice of Law & Venue: This Agreement shall be governed by the laws of the state of North Carolina, without regard to its law of conflict of laws. Any legal action or proceeding shall be venued in the State or Federal Court nearest the municipality in which Summit's office is located.

I) Limitations Period: Causes of action pertaining to this Agreement shall be deemed to have accrued and the applicable statutes of limitation and repose shall commence to run at the earlier of either the date of Substantial Completion of the Project or the date Summit's services are substantially complete.

J) Assigns: Neither the client nor Summit may delegate, assign, or transfer his duties or interest in this Agreement without consent of the other party, except Summit may in its discretion utilize qualified subconsultants in the performance of the Scope of Services. Notwithstanding the foregoing, Summit may assign its rights, in whole or in part, without such consent and upon ten (10) days prior written notice to the Client, to (a) one or more of its subsidiaries, or (b) an entity that acquires all or substantially all of the business or assets of such party to which this Agreement pertains, whether by merger, reorganization, acquisition, sale, or otherwise.

K) Delays: If the time for completion of Summit's Services, if any, is changed, or the orderly and continuous progress of Summits Services is impaired, or Summit's Services are delayed or suspended for any reason, then the time for completion of Summit's Services, if any, and the rates and amounts of Summit's compensation shall be adjusted to account for such delay.

L) No Third-Party Beneficiaries: This Agreement is for the sole benefit of the parties hereto and their respective successors and permitted assigns and nothing herein, express or implied, is intended to or shall confer upon any other Person any legal or equitable right, benefit, or remedy of any nature whatsoever, under or by reason of this Agreement.

M) Severability, Reformation and Survival: If any provision in this Agreement is held invalid, illegal, or unenforceable, the enforceability of the remaining provisions shall not be impaired thereby. The invalid, illegal or unenforceable provision shall be replaced by a mutually acceptable provision, which, being valid, legal and enforceable, comes closest to the parties' intention underlying the invalid, illegal or unenforceable provision. Limitations of liability, indemnities, and other express representations shall survive termination of this Agreement for any cause.

N) LIMITATION OF LIABILITY: EXCEPT AS OTHERWISE PROVIDED FOR IN THE AGREEMENT, THE PARTIES AGREE THAT, TO THE FULLEST EXTENT PERMITTED BY LAW SUMMIT'S (INCLUDING ALL OF SUMMIT'S OFFICERS, DIRECTORS, AGENTS, AFFILIATES, MEMBERS, AND EMPLOYEES) TOTAL LIABILITY TO CLIENT (INCLUDING ANY CONTRACTOR OR SUBCONTRACTOR) AND ANYONE CLAIMING BY, THROUGH, OR UNDER CLIENT FOR ANY AND ALL INJURIES, CLAIMS, LOSSES, EXPENSES, DAMAGES OR CLAIMS OR EXPENSES ARISING OUT OF OR RELATING TO THIS AGREEMENT WHETHER ARISING IN IN CONTRACT, TORT, EQUITY, STRICT LIABILITY, BY STATUTE, OR OTHERWISE, SHALL BE LIMITED TO AND SHALL IN NO INSTANCE EXCEED THE LESSER OF: (A) \$250,000.00 OR (B) THE AMOUNT PAID TO SUMMIT UNDER THIS AGREEMENT. THIS LIMITATION INCLUDES BUT IS NOT LIMITED TO CLAIMS BASED ON ANY PROFESSIONAL NEGLIGENCE, NEGLIGENT MISREPRESENTATION, ERROR, OMISSION, STRICT LIABILITY, AND BREACH OF CONTRACT. THE PARTIES UNDERSTAND AND AGREE THAT HIGHER LIMITS ARE AVAILABLE FOR A NEGOTIATED FEE.

O) Indemnification: To the fullest extent permitted by law, Client agrees to defend, indemnify and hold harmless Summit, its officers, directors, employees, agents, and subconsultants from all claims, damages, injuries, liabilities, costs and expenses, including reasonable attorneys' fees, arising out from or claimed to arise from the acts, omissions, negligence, fault, breach of contract, breach of warranty, or strict liability of Client or its employees, agents, assigns, contractors, or subcontractors.

P) Consequential Damages: To the fullest extent permitted by law, the Parties waive against one another, including as relates to their respective employees, officers, directors, members, agents, insurers, partners, consultants, or any other similarly positioned affiliate, any and all claims for or entitlement to special, incidental, indirect, consequential, punitive, treble, or exemplary damages arising out of, resulting from, or in any way related to this Agreement or the Project, from any cause or causes. Consequential damages include, without limitation loss of profits, revenue, financing; rental expenses; cost of replacement power; and loss of use of equipment or facilities.