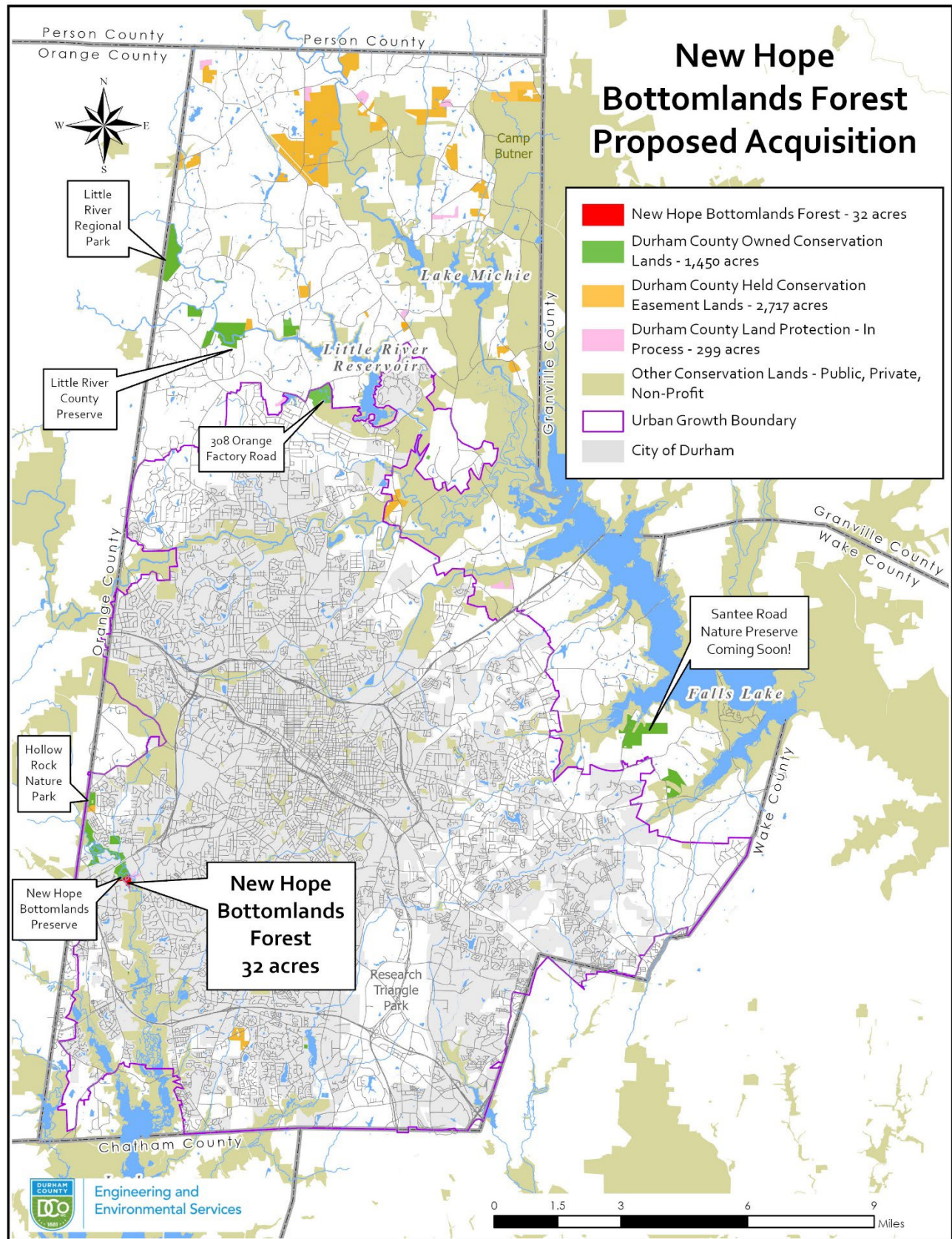


New Hope Bottomlands Forest Acquisition

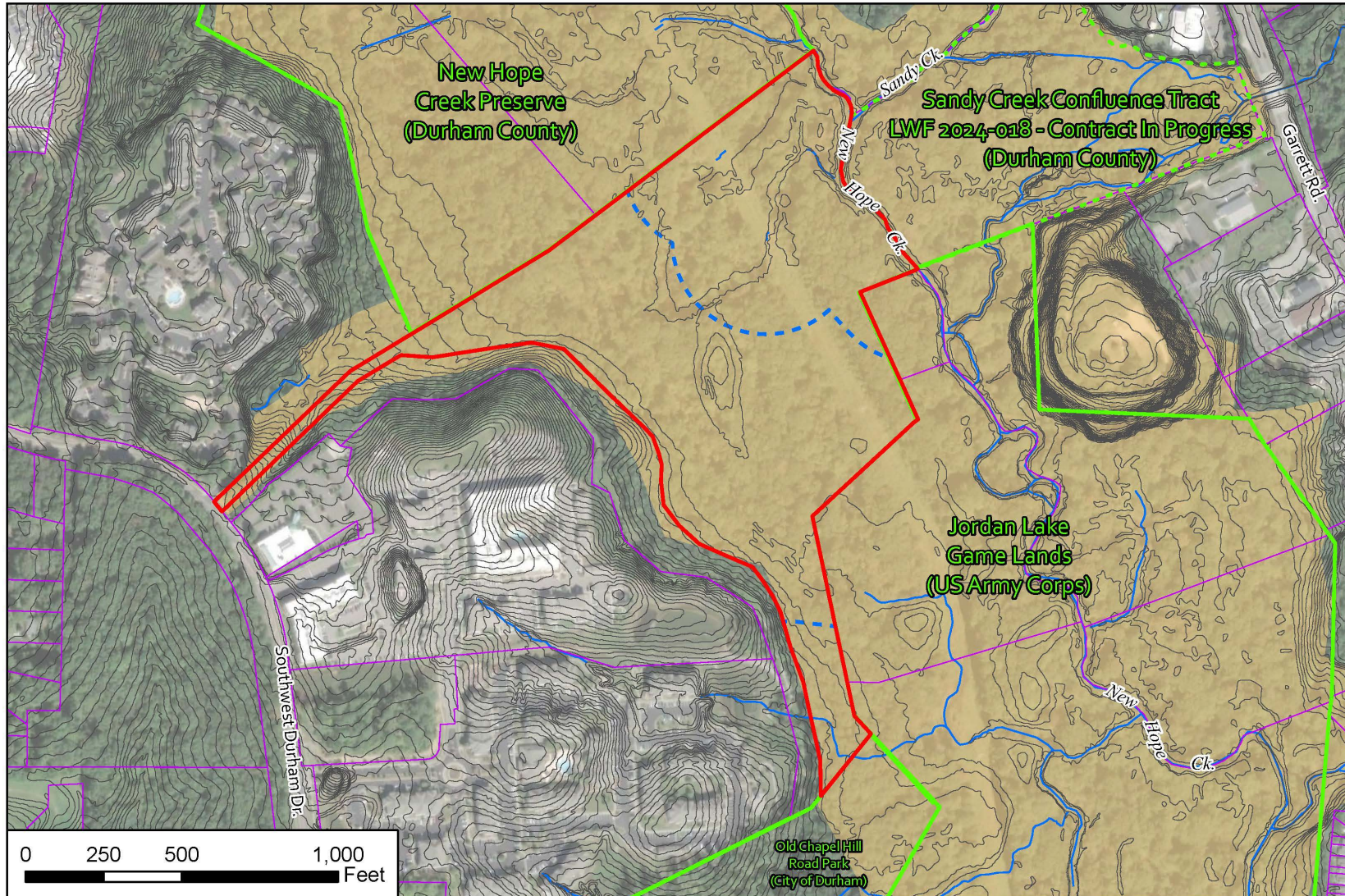




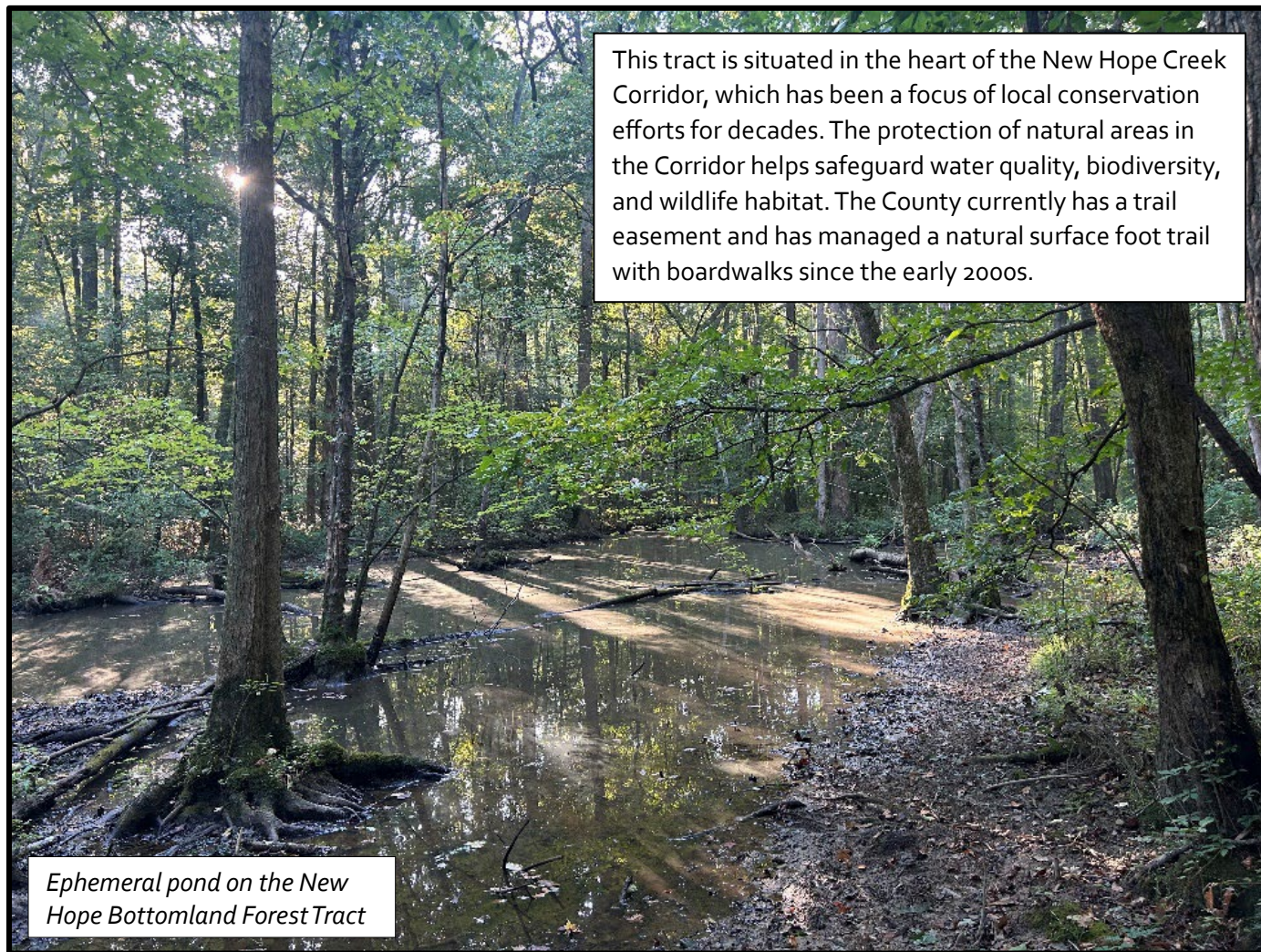
New Hope Bottomlands Forest Tract
NHP Natural Area
Durham County Open Space Program
North Carolina Land and Water Fund
July 7, 2025 Update



- REVISED Project Area (32ac)
- Other Conservation Land
- NHP Natural Area
- Tax Parcels
- Streams
- 300ft Stream Buffers

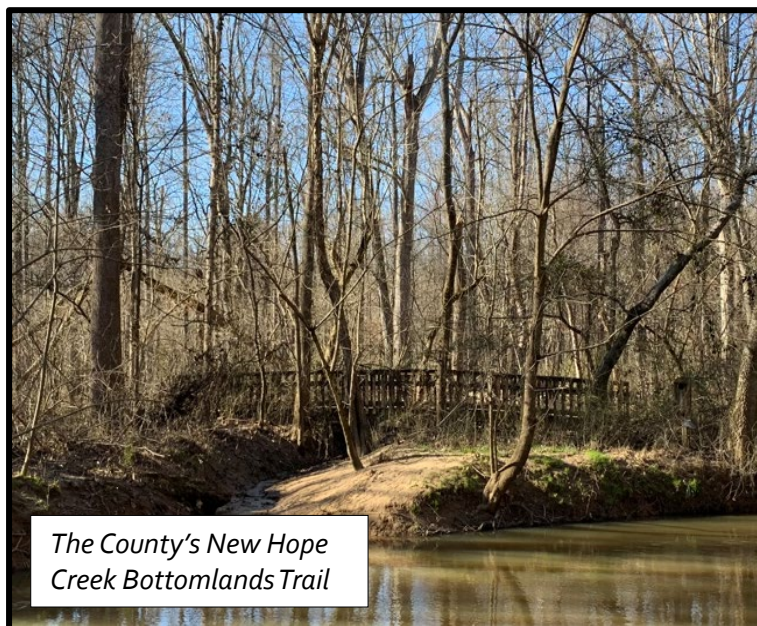


New Hope Bottomlands Forest and the New Hope Creek Corridor



This tract is situated in the heart of the New Hope Creek Corridor, which has been a focus of local conservation efforts for decades. The protection of natural areas in the Corridor helps safeguard water quality, biodiversity, and wildlife habitat. The County currently has a trail easement and has managed a natural surface foot trail with boardwalks since the early 2000s.

Ephemeral pond on the New Hope Bottomland Forest Tract



The County's New Hope Creek Bottomlands Trail



Mature hardwood bottomland forest



New Hope Creek

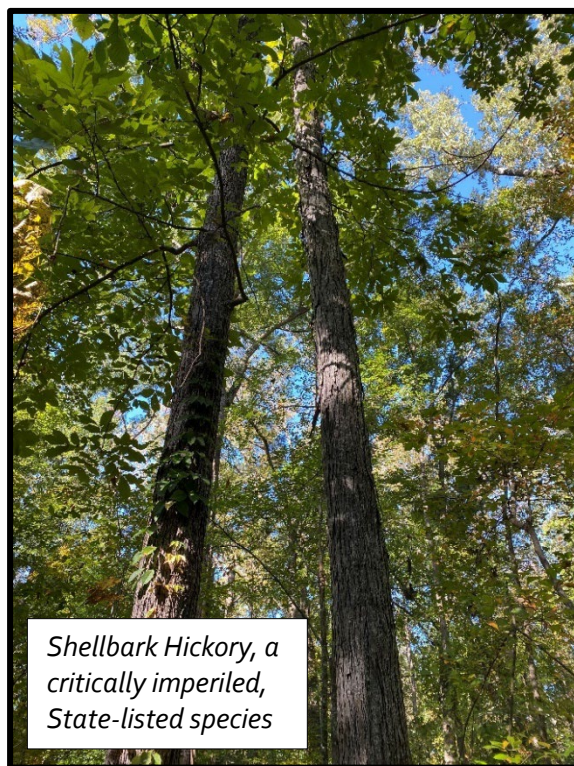
The tract is part of the New Hope Creek Bottomlands Forest Natural Area, one of the most diverse and unique ecosystems in central North Carolina, and it has been [extensively studied](#) by professional researchers and volunteer citizen scientists. It is also part of a vital wildlife corridor, and a variety of animal species – including bobcat, otter, beaver, and coyote, as well as many birds, amphibians, and reptiles – have been documented on this tract.



Bobcat tracks



Cardinal flower



Shellbark Hickory, a critically imperiled, State-listed species



Gray treefrog



Marbled Salamander



Moth Night event at the County's Bottomlands Trail



Ecosystem restoration workday along the Bottomlands Trail

Impacts from land use changes in southwestern Durham County, including invasive species, increased runoff, artificial light, and habitat loss, pose a significant threat to the Bottomlands ecosystem. Permanent protection, along with ongoing research and active management by staff, scientists, and volunteers, offers the best approach for conserving the biodiversity on this tract.



Russula neoelpidensis, a newly described species of fungus first discovered at the Bottomlands in 2021. "Neoelpidensis" comes from the Greek for "new hope". (Image from [Miller and Cotter, 2025](#)).



Citizen science training workshop at the Bottomlands Trail

Breeding Bird Survey, New Hope Bottomlands, 2024
Stephen Hall (North Carolina Biodiversity Project)
David Bradley (Durham County Open Space Program)
Jin Bai, Gail Rogenkay, Vicki Neeley, and David Anderson (New Hope Bird Alliance)
Report to the Durham Open Space Program, New Hope Bird Alliance, and North Carolina Biodiversity Project



Bird surveys and wildlife monitoring at the Bottomlands



10 °C 50 °F 2023/05/06 22:22:21