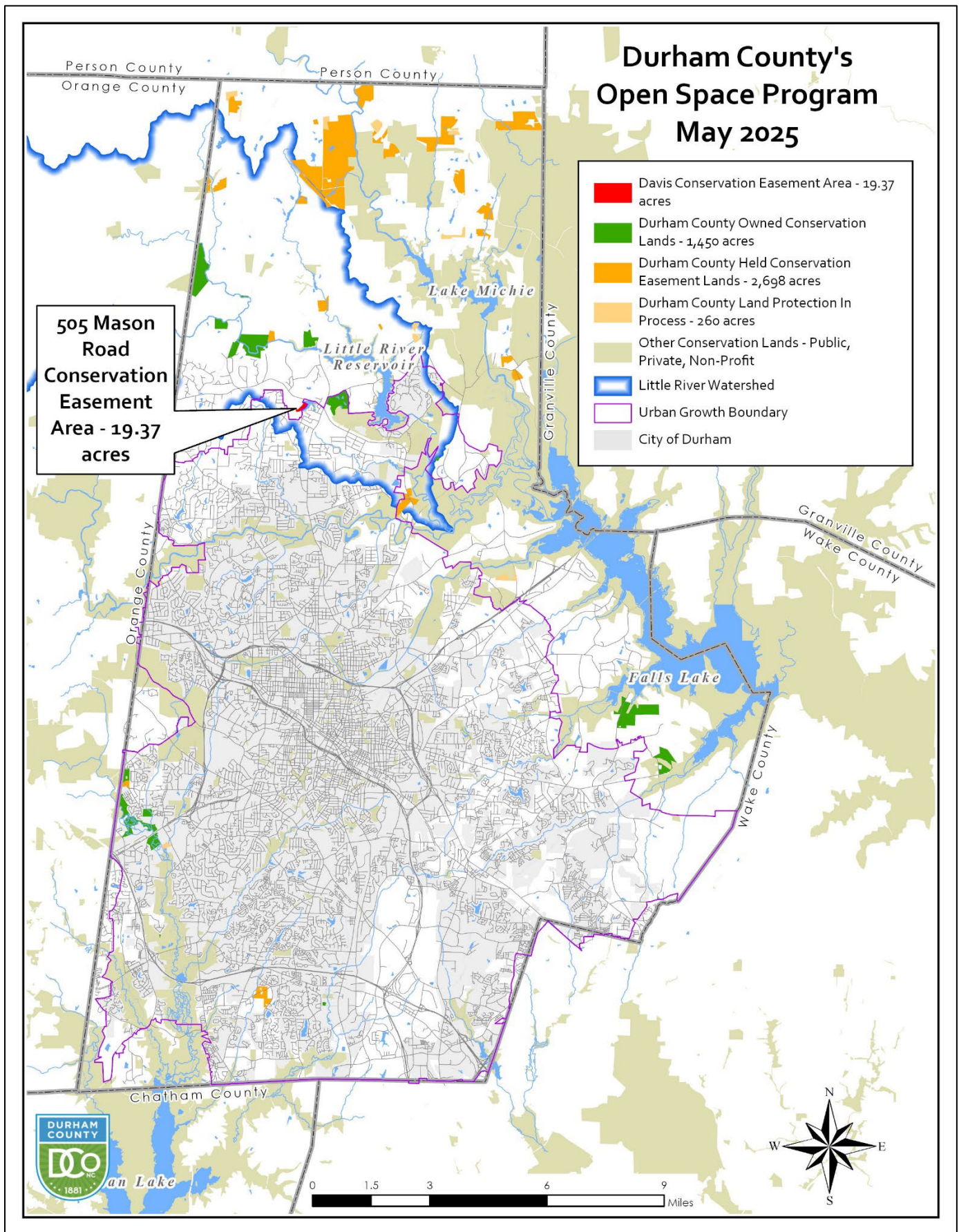
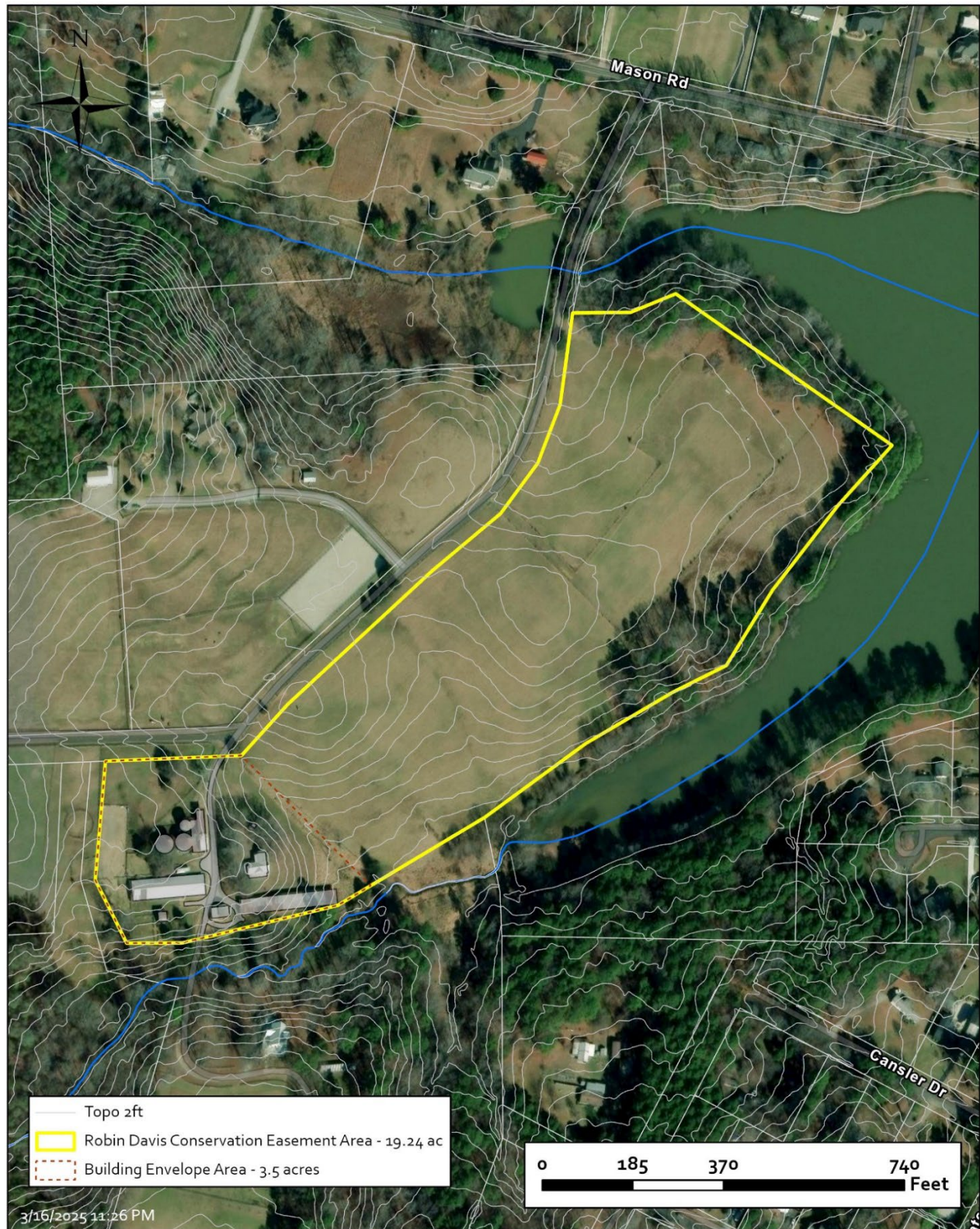


Robin Davis's R Farm - Conservation Easement – 19.37 acres



Robin Davis's R Farm - Conservation Easement – 19.37 acres

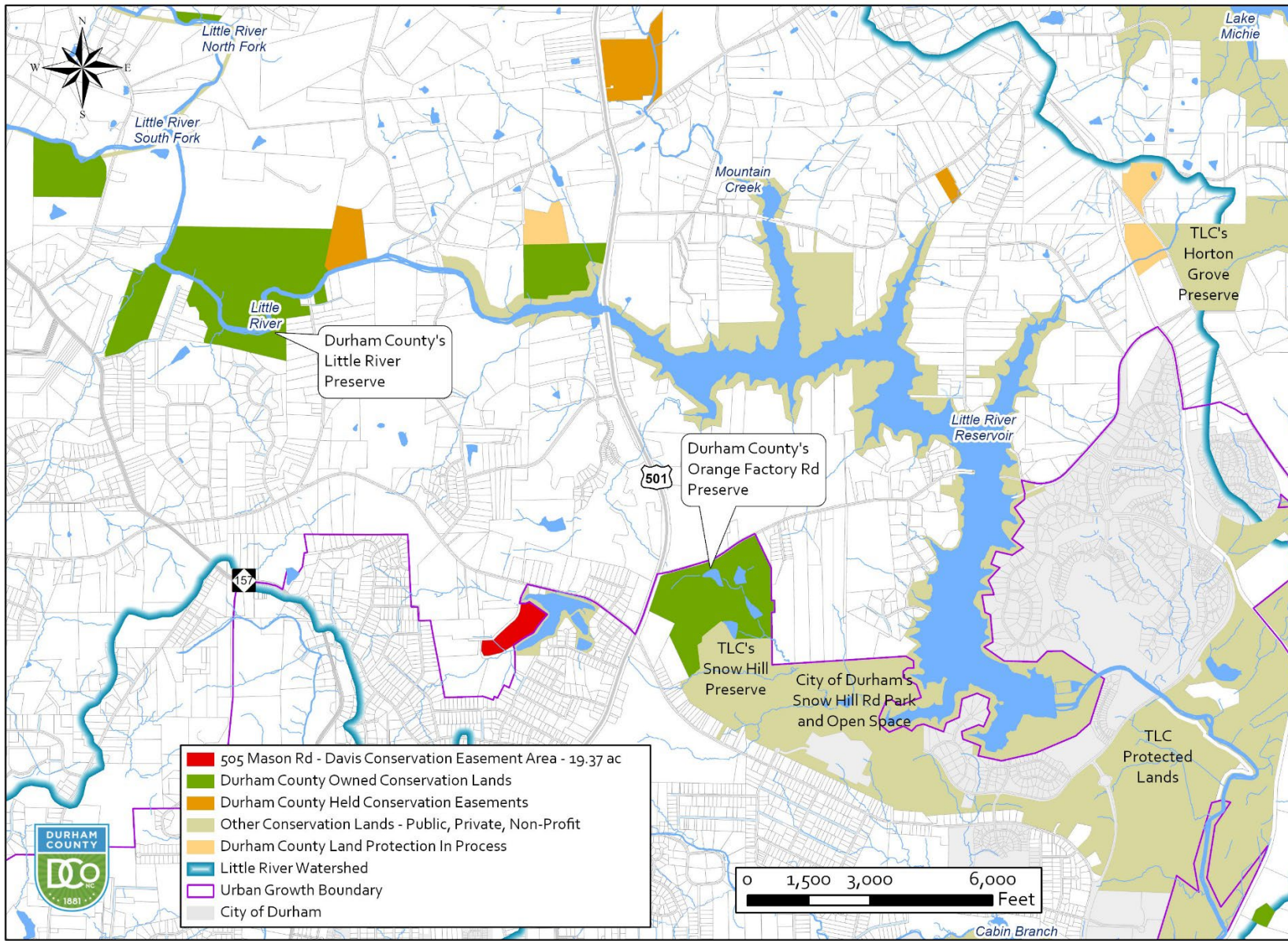
Robin Davis Farm - 505 Mason Road



Path: O:\GIS\Davis_Robin\RobynDavis2025.aprx

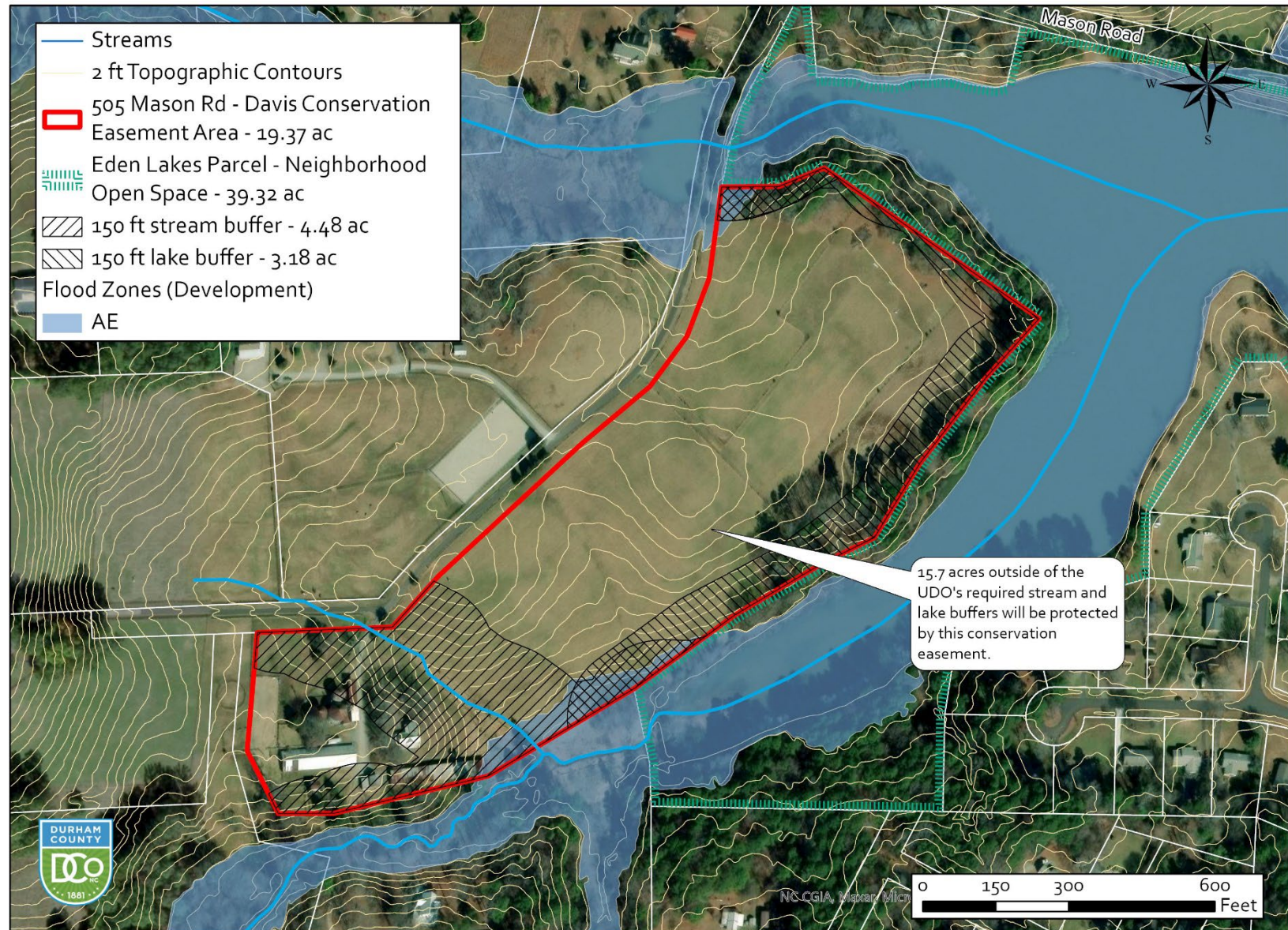
Robin Davis's R Farm - Conservation Easement – 19.37 acres

505 Mason Road Davis Conservation Easement - 19.37 acres



Robin Davis's R Farm - Conservation Easement – 19.37 acres

505 Mason Road Davis Conservation Easement - 19.37 acres



Robin Davis's R Farm - Conservation Easement – 19.37 acres



Ms. Davis has lived on her farm for over 30 years and wants to permanently protect it from any future development or subdivision. She values wildlife and manages many aspects of her farm to support habitat.

Robin Davis's R Farm - Conservation Easement – 19.37 acres



Robin Davis's R Farm - Conservation Easement – 19.37 acres



Ms. Davis manages her open land for hay with small areas for horse pasture. Eighty-eight percent (88%) of the soils on her farm are prime farmland or of state significance.



This parcel is identified as a priority for source water protection by the City of Durham's watershed protection program.