

Stanford L. Warren Library  
RFQ - Furniture & Installation



Furniture Package Total: \$186,008.52  
Estimated Sales Tax (7.5%): \$13,950.64  
Grand Total with Sales Tax: \$199,959.16

RFQ provide by - Interior Elements



Sales Contact: Brian O'Haver  
Email: [brian.ohaver@in-elements.com](mailto:brian.ohaver@in-elements.com)  
Phone: 919-880-2179

Design/PM Contact: Carol Yu Sellers  
Email: [carol.sellers@in-elements.com](mailto:carol.sellers@in-elements.com)  
Phone: 919-609-5768

**Contract:** 201400059/STC 420A  
**Manufacturer:** Om Seating  
**Item:** C-1

**Image:**



**Description:** All poly flip/nesting chair w/ arms -  
Sea Foam w/ P. Gray Frame

**Model#** OM5-AN-A-GNO3-PF-PF-GRCM

**Qty.** 43

**List Price per unit:** \$588

**Discounting:** 46.667% off List

**Price per unit:** \$313.60

**Estimated Labor:** \$5 per chair

**Subtotal:** \$13,699.80

**7.5% Sales Tax:** \$1,027.49

**Grand Total:** \$14,727.29

**Lead Time:** 15 business days from order acknowledgement

**Room:** Rm 101 (3) & 102 (40)



Interior **Elements**

**Contract:** 201400059/STC 420A  
**Manufacturer:** Om Seating  
**Item:** C-2

**Image:**



**Description:** All poly flip/nesting chair w/o  
arms - Palladium Gray w/ P. Gray  
Frame

**Model#** OM5-AN-N-GNO3-PF-PF-GRCM

**Qty.** 44

**List Price per unit:** \$545

**Discounting:** [46.667% off List](#)

**Price per unit:** \$290.67

**Estimated Labor:** \$5 per chair

**Subtotal:** \$13,009.48

**7.5% Sales Tax:** \$975.71

**Grand Total:** \$13,985.19

**Lead Time:** 15 business days from order acknowledgment

**Room:** Rm 102 (40), 110 (2), 115 (2)



**Contract:** 201800242-420A  
**Manufacturer:** SitOnIt Seating  
**Item:** C-3

**Image:**



**Description:** Multi purpose 4-leg chair, All Poly - Lagoon

**Model#** 1011 FT1 A0 PS SC15 GL1 FC2 AC

**Qty.** 26

**List Price per unit:** \$325.00

**Discounting:** [54% off List](#)

**Price per unit:** \$149.50

**Estimated Labor:** \$5 per chair

**Subtotal:** \$4,017.00

**7.5% Sales Tax:** \$301.28

**Grand Total:** \$4,318.28

**Lead Time:** 3-4 weeks

**Room:** 206 (16), 113 (10)



**Contract:** 420A  
**Manufacturer:** Allsteel  
**Item:** C-4

**Image:**



**Description:** O6 Task Mesh High Back Chair  
Height Adj Arms: Height: 37.75" -  
43" Width : 26.25" Depth  
25.25", Seat finish: Titanium  
mesh  
Back Finish: 4 way mesh Titanium  
Leg base finish: Titanium

**Model#** MNL-MHH

**Qty.** 13

**List price per unit:** \$1,296.00

**Discounting:** 58.667% off List

**Price per unit:** \$535.68

**Estimated Labor:** \$10 per chair

**Subtotal:** \$7,093.84

**7.5% Sales Tax:** \$532.04

**Grand Total:** \$7,625.88

**Lead Time:** 4 - 6 week s

**Room:** 112, 112A, 113B, 202



Interior **Elements**

**Contract:** 201800242-420A  
**Manufacturer:** SitOnIt Seating  
**Item:** C-7

**Image:**



**Description:** Multi purpose 4-leg Barstool - 30"SH,  
All Poly - Lagoon

**Model#** 1011 FT1 A0 PS SC15 GL1 S2 FC2 AC

**Qty.** 12

**List price per unit:** \$475

**Discounting:** [54% off List](#)

**Price per unit:** \$218.50

**Estimated Labor:** \$5 per chair

**Subtotal:** \$2,682.00

**7.5% Sales Tax:** \$201.15

**Grand Total:** \$2,883.15

**Lead Time:** 3-4 weeks

**Room:** 206 (6), 217 (6)



Interior **Elements**

**Contract:** 420A  
**Manufacturer:** Allsteel  
**Item:** C-8

**Image:**



**Description:** O6 Task Stool, Armless: Width : 120" Depth : 36" Height : 42" -  
Seat finish: Titanium mesh  
Back Finish: 4 way mesh Titanium  
Leg base finish: Titanium

**Model#** MNLS-MHA

**Qty.** 1

**List price per unit:** \$1,296.00

**Discounting:** 58.667% off List

**Price per unit:** \$535.68

**Estimated Labor:** \$10 per chair

**Subtotal:** \$545.68

**7.5% Sales Tax:** \$40.93

**Grand Total:** \$586.61

**Lead Time:** 4 -5 weeks

**Room:** 206 Reading Room



**Contract:** NC420A - 201800242  
**Manufacturer:** Agati  
**Item:** C-13

**Image:**



**Description:** Hampton Banquette 180 Degree  
Inner Two Curved Banquettes 180  
degree curve with cushioned seat  
and back, metal legs Upholstered  
screen. Plastic Laminate Shelf with  
PVC Edge at 36"h  
\*Power units (5) Undermount  
power/USB A+C (5) with (2) power  
strips 128w 66d  
48h 19sh 36wsh

**Finishes:** Top: Fawn Cypress Edge:  
Fawn Cypress Seat:  
Mayer-Silverweave/Pewter  
Back: ArcCom-Bocce/Citrus  
Screen: Mayer-Caressa/Aqua

**Model#** HMP-STG-180DEG-M-U-S-P-MOD  
ELEC-DEAN-UM-WH-1U1P  
ELEC-UL101-4-BC

**Qty.** 1

**List per unit:** \$39,685.98

**Discounting:** 47.718%

**Price per unit:** \$20,748.56

**Estimated Labor:** \$200.00

**Subtotal:** \$20,948.56

**7.5% Sales Tax:** \$1,571.14

**Grand Total:** \$22,519.70

**Lead Time:** 12 - 18 weeks

**Room:** 217 Teens Reading





**Contract:** NC420A - 201800242  
**Manufacturer:** Agati  
**Item:** C-14

**Image:**



**Description:** Hampton Banquette 180 Degree  
Inner Two Curved Banquettes 180  
degree curve with cushioned seat  
and back, NO metal legs, and  
Upholstered screen. Plastic  
Laminate Shelf with PVC Edge at  
27"h \*Power units (5)  
Undermount power/USB A+C (5)  
with (2) power strips  
128w 66d 32h 12sh 27wsh

**Finishes:** Top: Fawn Cypress      Edge:  
Fawn Cypress      Seat:  
Mayer-Caressa/Tangerine  
Back: ArcCom-Spin/Primary  
Screen: Mayer-  
Silverweave/Spring

**Model#** HMP-STG-180DEG-M-U-S-P-MOD  
ELEC-DEAN-UM-WH-1U1P  
ELEC-UL101-4-BC

**Qty.** 1  
**List price per unit:** \$37,580.25

**Discounting:** 47.702%

**Price per unit:** \$19,563.58

**Estimated Labor:** \$200.00

**Subtotal:** \$19,763.58

**7.5% Sales Tax:** \$1,482.27

**Grand Total:** \$21,245.85

**Lead Time:** 12 - 18 weeks

**Room:** 215 Childrens Reading



Interior **Elements**

**Contract:** NC420A - 201800242  
**Manufacturer:** Agati  
**Item:** C-16B

**Image:**



**Description:** Etta Kids Chair 15.5W x 17.5D x 26H, 14SH Finish: Natural Maple

<b>Model#</b>	ETA-STG-1400
<b>Qty.</b>	3
<b>List price per unit:</b>	\$1,097.05
<b>Discounting:</b>	48% off List
<b>Price per unit:</b>	\$570.46
<b>Estimated Labor:</b>	\$5 per chair
<b>Subtotal:</b>	\$1,726.38
<b>7.5% Sales Tax:</b>	\$129.48
<b>Grand Total:</b>	\$1,855.86
<b>Lead Time:</b>	12 - 18 weeks
<b>Room:</b>	215 Children's Reading



Interior **Elements**

**Contract:** 201800242-420A  
**Manufacturer:** SitOnIt Seating  
**Item:** C-17

**Image:**



**Description:** Fully upholstered guest chair,  
Momentum: Silica Leather - Dove  
Arm/Frame: Silver

**Model#** 5214 AC3 UP VG6 G5 FS AC

**Qty.** 2

**List Price per unit:** \$1,058.00

**Discounting:** [54% off List](#)

**Price per unit:** \$486.68

**Estimated Labor:** \$5 per chair

**Subtotal:** \$983.36

**7.5% Sales Tax:** \$73.75

**Grand Total:** \$1,057.11

**Lead Time:** 3-4 weeks

**Room:** 112A



Interior **Elements**

**Contract:** NC 420A  
**Manufacturer:** Allsteel  
**Item:** T-1

**Image:**



**Description:** 72x30 Flip & Nesting Training  
Table on casters: Laminate - Fawn  
Cypress, Paint- P8 T/T, Edge - T  
mold w/ 3/4 radius \*to match top

**Model#** AW2VM30N72CB, AW3LT3072V  
**Qty.** 12  
**List price per unit:** \$2,791.00  
**Discounting:** 62.667% off List  
**Price per unit:** \$1,041.97  
**Estimated Labor:** \$15 per table  
**Subtotal:** \$12,683.64  
**7.5% Sales Tax:** \$951.27  
**Grand Total:** \$13,634.91  
**Lead Time:** 4 -6 weeks  
**Room:** 101 Meeting Room A



Interior **Elements**

**Contract:** 420A  
**Manufacturer:** Allsteel  
**Item:** T-1A

**Image:**



**Description:** 60x30 Flip & Nesting Training  
Table on casters: Laminate - Fawn  
Cypress, Paint- P8 T/T, Edge - T  
mold w/ 3/4 radius \*to match top

**Model#** AW3LT3060V, AW2VM30N60CB  
**Qty.** 12  
**List price per unit:** \$2,607.00  
**Discounting:** 62.667% off List  
**Price per unit:** \$973.28  
**Estimated Labor:** \$15 per table  
**Subtotal:** \$11,859.36  
**7.5% Sales Tax:** \$889.45  
**Grand Total:** \$12,748.81  
**Lead Time:** 4 - 6 weeks  
**Room:** 102 Meeting Room B (10)  
Cooridor & Elevator Lobby (2)



Interior **Elements**

**Contract:** 420A  
**Manufacturer:** Allsteel  
**Item:** T-2

**Image:**



**Description:** Structure 36" X 60" Rectangle Top  
Lam SqrEdge w/ Structure X Base  
Med. Seated Height with Glides  
Finish: Designer White Top/Edge  
Base: Silver

**Model#** AMPTLF3660RE, AMPTXM29G  
**Qty.** 2  
**List price per unit:** \$2,296.00  
**Discounting:** 62.667% off List  
**Price per unit:** \$857.17  
**Estimated Labor:** \$15 per table  
**Subtotal:** \$1,744.34  
**7.5% Sales Tax:** \$130.83  
**Grand Total:** \$1,875.17  
**Lead Time:** 4 - 6 weeks  
**Room:** 113 Receivng



Interior **Elements**

**Contract:** 420A  
**Manufacturer:** Allsteel  
**Item:** T-3

**Image:**



**Description:** 72Wx30D Rect Lam Flat Edge  
Single Surface w/ A6 2 Stage 2 Leg  
Rectangle C Foot- Top:  
Fawn Cypress  
C Leg base finish: Silver Up-  
Down control panel

**Model#** A6REC2S2LCF, AF5RS7230D  
**Qty.** 3  
**List price per unit:** \$3,116.00  
**Discounting:** 72% off List  
**Price per unit:** \$970.76  
**Estimated Labor:** \$15 per table  
**Subtotal:** \$2,957.28  
**7.5% Sales Tax:** \$221.80  
**Grand Total:** \$3,179.08  
**Lead Time:** 4 - 6 weeks  
**Room:** Study Room 110 & 115 (2)  
Sorting Room 113B (1)



Interior **Elements**

**Contract:** 420A (Steelcase)  
201800242-420A (SitOnIt)  
**Manufacturer:** Allsteel & SitOnIt  
**Item:** T-3A

**Image:**



**Description:** 42Wx24D Rect Lam Flat Edge  
Single Surface w/ Switchback  
Stage 2 Leg Rectangle T Foot-  
Top: Fawn Cypress  
C Leg base finish: Silver Memory  
Control Pad

**Model#** T52442SN (Allsteel)  
3162.TBT6.TZ2442 (SitOnIt)

**Qty.** 1

**List price per unit:** \$1,436.00

**Discounting:** 72% off List (Allsteel) 54% off List  
(SitOnIt)

**Price per unit:** \$559.40

**Estimated Labor:** \$15 per table

**Subtotal:** \$574.40

**7.5% Sales Tax:** \$43.08

**Grand Total:** \$617.48

**Lead Time:** 4 - 6 weeks

**Room:** Sorting Room 113B



Interior **Elements**



**Contract:** 420A  
**Manufacturer:** Allsteel  
**Item:** T-3B

**Image:**



**Description:** 48Wx30D Rect Lam Flat Edge  
Single Surface w/ A6 2 Stage 2 Leg  
Rectangle C Foot- Top: Fawn  
Cypress  
C Leg base finish: Silver Up-  
Down control panel

**Model#** A6REC2S2LCF, AF5RS4830  
**Qty.** 2

<b>List price per unit:</b>	\$3,062.00
<b>Discounting:</b>	72% off List
<b>Price per unit:</b>	\$857.36
<b>Estimated Labor:</b>	\$15 per table
<b>Subtotal:</b>	\$1,744.72
<b>7.5% Sales Tax:</b>	\$130.85
<b>Grand Total:</b>	\$1,875.57
<b>Lead Time:</b>	4 - 6 weeks
<b>Room:</b>	112 Part Timers



Interior **Elements**

**Contract:** NC420A - 201800242  
**Manufacturer:** Agati  
**Item:** T-6

**Image:**



**Description:** Manifest Benching (6 pack) 23x48  
per surface - to include divider  
screens and power/data, cable  
mgmt. Laminate: Fawn Cypress,  
Paint Finish: Metallic Silver

**Model#** MFT-WKS-8PD-16854-4129 ,  
ELEC-DEAN-OS-WH-2U2P,  
ELEC-SLINKY-SQ-MS,  
ELEC-UL206-6-BC

**Qty.** 2

**List price per unit:** \$23,275.78

**Discounting:** [48% off List](#)

**Price per unit:** \$12,103.37

**Estimated Labor:** \$1,830.00

**Subtotal:** \$26,036.74

**7.5% Sales Tax:** \$1,952.76

**Grand Total:** \$27,989.50

**Lead Time:** 12 - 18 weeks

**Room:** 206 Reading Room



Interior **Elements**

**Contract:** 420A (Allsteel & ESI)  
**Manufacturer:** Allsteel & ESI (monitor arms)  
**Item:** WS-1

**Image:**



**Description:** Optimize 6x6 Workstations w/ 30x72 HAT, 24x42 fixed surface, BBF, overhead storage, wire manager, power duplexes, data knockouts & dual monitor arm - All laminate: Cypress Fawn/Panel Fabric: Etch - Outline, Paint: Silver, BBF: Designer White

**Model#** EPPA2-SLV (ESI)  
ZHFBPMK, K2TOC154215A,  
YPPSP281518BBFM, A871272, A871501,  
A871502, A871503, A879072, ATADF3,  
CMT36, P13572TP, P16530TP, P16542TP,  
P1TC30, P1TC42, P1TC72, P335PV, P365PV,  
P3CONL65N, P3CONS1, P3CONSL, P3CONST,  
P3CONT65N, P3CONTT, P3CONVH30,  
A6REC2S2LCF, AF5RS7230UD, T52442SN,  
T6CB18L, T6CB18R, TKPPBL, TKPPBR,  
6

**Model#**

**Qty.**

**List per per unit:** \$516.00 Esi  
**WS Total List:** \$79,572.00 Allsteel  
**Discounting:** 48% off List - ESI  
**Discounting:** 72% off List - Allsteel  
**Price per unit:** \$268.32 Esi  
**Price per WS:** \$3,744.52 Allsteel  
**Estimated Labor:** \$8,000.00  
**WS Subtotal:** \$32,077.04  
**7.5% Sales Tax:** \$2,405.78  
**Grand Total:** \$34,482.82

**Lead Time:** 4 - 6 weeks  
**Room:** Room 112



**Contract:** 420A  
**Manufacturer:** Allsteel  
**Item:** D-1

**Image:**



**Description:** 30x72 Single BBF Ped HAT Desk w/ Modesty,  
24x36 Fixed Return, FF - All Laminate Finish:  
Fawn Cypress

**Model#** WKDAFNJ297230LH-FF, WKMP1448,  
WKNSP281524-FF, WKEP2824RH,  
WKWSRS3624, WKAUCB29

<b>Qty.</b>	1	
<b>List price:</b>		\$12,569.00
<b>Discounting:</b>		<a href="#">72% off List</a>
<b>Price per unit:</b>		\$3,519.32
<b>Estimated Labor:</b>		\$175.00
<b>Subtotal:</b>		\$3,694.32
<b>7.5% Sales Tax:</b>		\$277.07
<b>Grand Total:</b>		\$3,971.39
<b>Lead Time:</b>	4 - 6 weeks	
<b>Room:</b>	112A Office	



**Contract:** 420A  
**Manufacturer:** Allsteel  
**Item:** S-1

**Image:**



**Description:** 42Hx36Wx18D Three Drawer  
Lateral File Unit w/ Common Top -  
Finish: Fawn Cypress

<b>Model#</b>	9120R8424, KLGK, K2T423618FFF
<b>Qty.</b>	2
<b>List price per unit:</b>	\$12,107.00
<b>Discounting:</b>	72% off List
<b>Price per unit:</b>	\$1,635.06
<b>Estimated Labor:</b>	\$75.00
<b>Subtotal:</b>	\$3,464.96
<b>7.5% Sales Tax:</b>	\$259.87
<b>Grand Total:</b>	\$3,724.83
<b>Lead Time:</b>	4 - 6 weeks
<b>Room:</b>	112A



**Contract:** N/A  
**Manufacturer:** Salisbury Industries Courier Box  
**Item:** S-14

**Image:**



**Description:** Courier Box, 49H - Gray, Steel  
construction w/ (3) locks

<b>Model#</b>	4975GRY	
<b>Qty.</b>	1	
<b>Discounting:</b>	n/a no contract	
<b>Price per unit:</b>		\$1,600.00
<b>Estimated Labor:</b>		\$175.00
<b>Subtotal:</b>		\$1,775.00
<b>7.5% Sales Tax:</b>		\$133.13
<b>Grand Total:</b>		\$1,908.13
<b>Lead Time:</b>	1 -2 Business days	
<b>Room:</b>	206 Reading Room	



**Contract:** 420A  
**Manufacturer:** ESI  
**Item:** MON-1

**Image:**



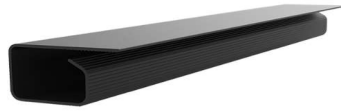
**Description:** Eppa Series Dual Monitor Arm  
w/DC & GM, Weight Capacity (per  
Arm) 2.2 - 17.6 lbs., Silver Finish

<b>Model#</b>	EPPA2-SLV	
<b>Qty.</b>	3	
<b>List per per unit:</b>		\$516.00
<b>Discounting:</b>		48% off List
<b>Price per unit:</b>		\$268.32
<b>Labor Estimated:</b>		\$15 per arm
<b>Subtotal:</b>		\$849.96
<b>7.5% Sales Tax:</b>		\$63.75
<b>Grand Total:</b>		\$913.71
<b>Lead Time:</b>	2 -3 weeks	
<b>Room:</b>	Reception	



**Contract:** 420A  
**Manufacturer:** ESI  
**Item:** CM-1

**Image:**



**Description:** Cable Management

<b>Model#</b>	TROUGH-18	
<b>Qty.</b>	6	
<b>List per per unit:</b>		\$35.00
<b>Discounting:</b>		48% off List
<b>Price per unit:</b>		\$18.20
<b>Estimated Labor:</b>		\$5 per unit
<b>Subtotal:</b>		\$139.20
<b>7.5% Sales Tax:</b>		\$10.44
<b>Grand Total:</b>		\$149.64
<b>Lead Time:</b>	2 -3 weeks	
<b>Room:</b>	Reception	



Interior **Elements**



**Contract:** N/A  
**Manufacturer:** Arakawa  
**Item:** DIS-1

**Image:**



**Description:**

Acrylic Display \*confirmation of ceiling height & display holder sizes required\*

**Model#**

CRP+CREAP, BS1R-CBR, CRC&MH, FRG1SS, FRG2SS, BS23BRSET,

**Qty.**

2

**Price per unit:** \$775.00

**Estimated Labor:** \$150 per hanging unit

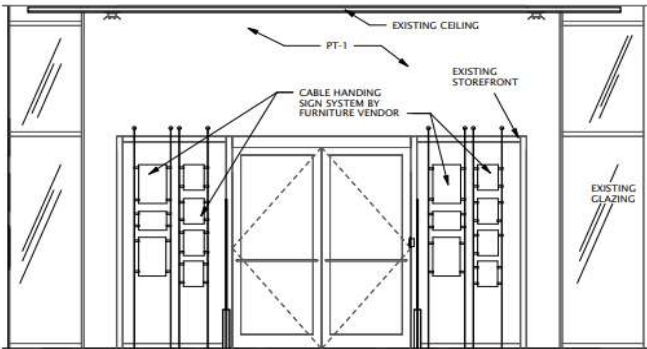
**Subtotal:** \$1,850.00

**7.5% Sales Tax:** \$138.75

**Grand Total:** \$1,988.75

**Lead Time:** 1-2 weeks

**Room:** Reception



Qty	Item name
2	CRB+CREAP Ceiling & Floor Rail 6ft - Aluminum
6	BS1R - CRB, CRC & MH Rail Clip (Straight Fused Cable)
16	FRG1SS - Midway Gripper for Horizontal/Angled Shelves and Vertical Panels/Signs (Not for Vertical Glass Panels)
16	FRG2SS - Double-Sided Midway Gripper for Horizontal/Angled Shelves & Vertical Panels/Signs (Not for Vertical Glass Panels)
6	BS23BRSET - Rail Tensioner for CRB, CRC & MH Rail
96	116SS - 1/16in 7x7 S/S Cable Price Per LF 16 pcs @ 6 FT each - CONFIRM

