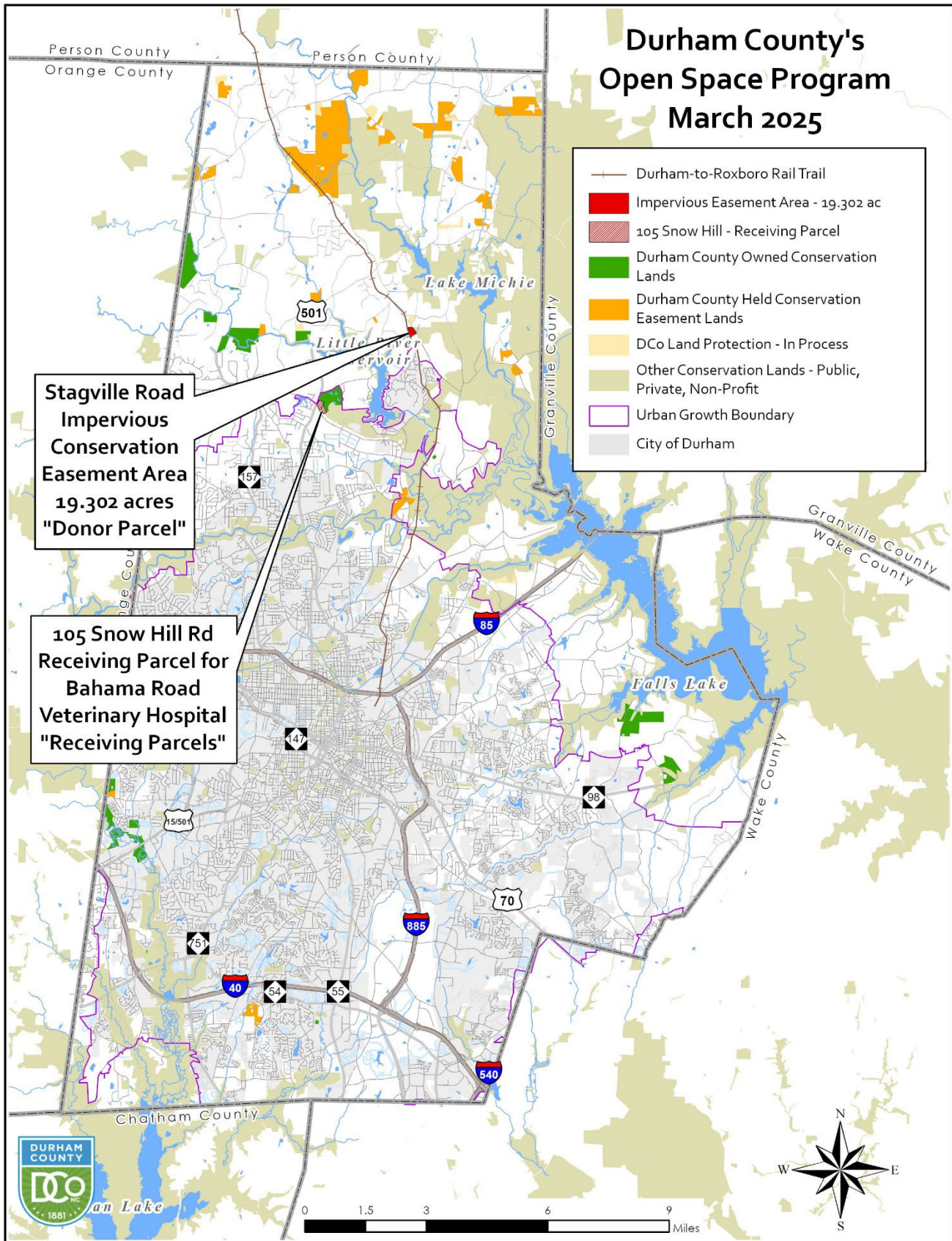


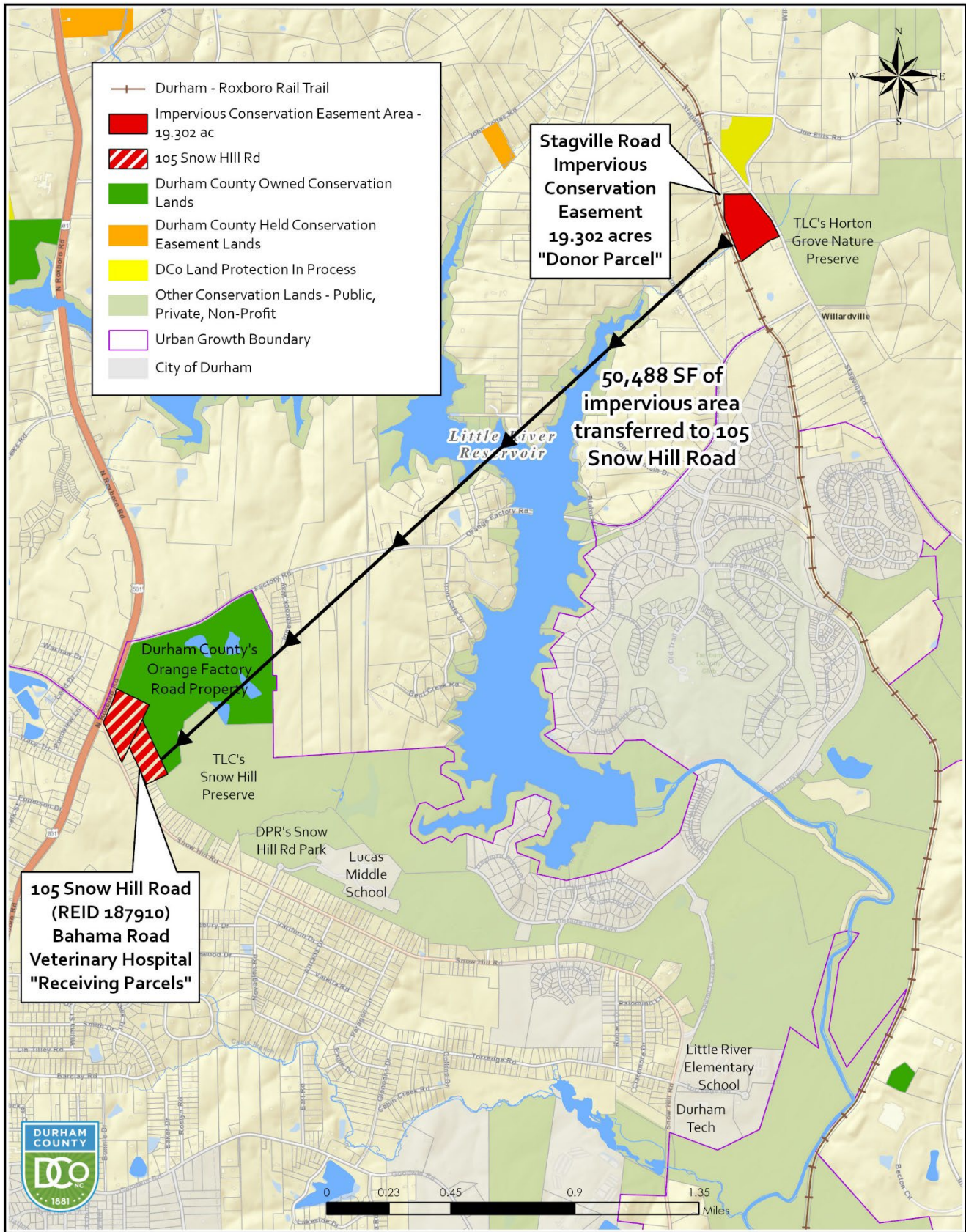
Stagville Road Impervious Surface Conservation Easement

A portion of REID 237256 – 19.302 acres



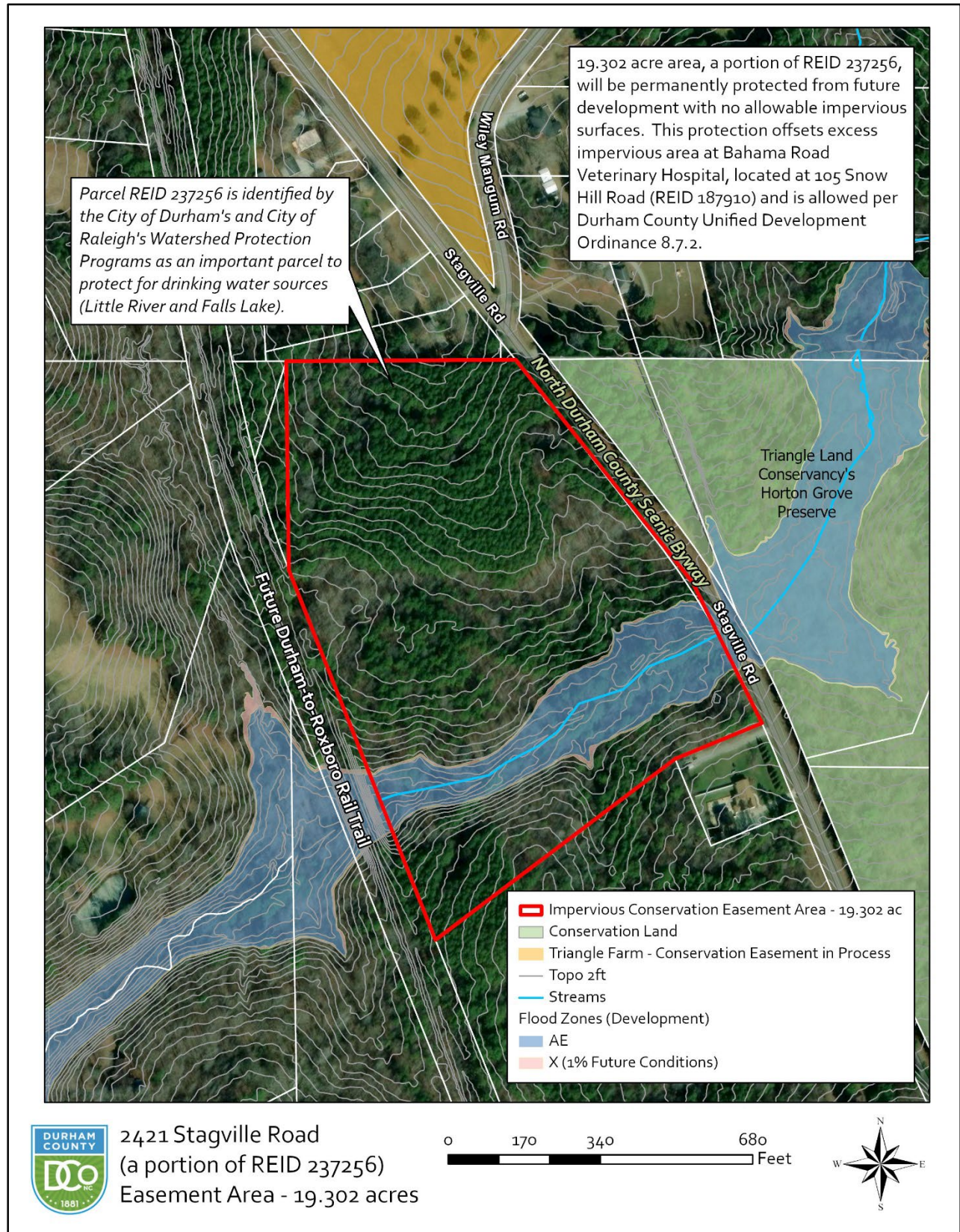
Stagville Road Impervious Surface Conservation Easement

A portion of REID 237256 – 19.302 acres



Stagville Road Impervious Surface Conservation Easement

A portion of REID 237256 – 19.302 acres



Stagville Road Impervious Surface Conservation Easement

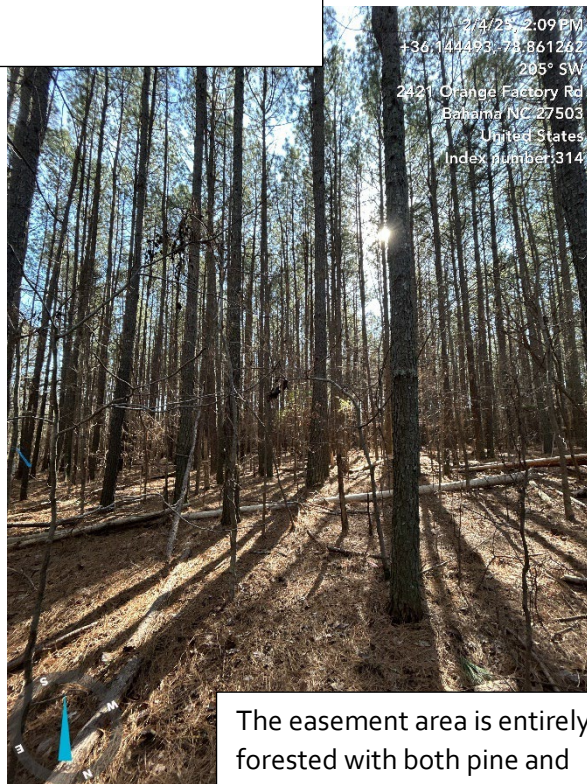
A portion of REID 237256 – 19.302 acres



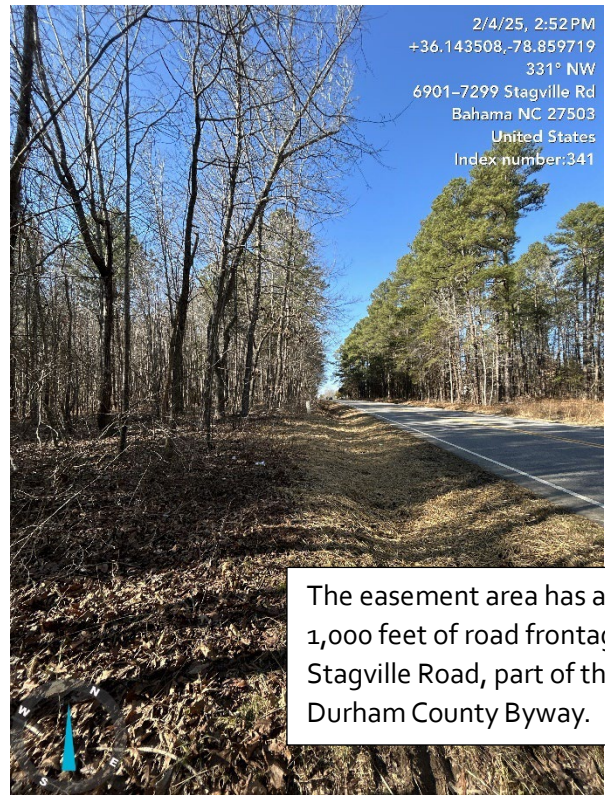
The easement area includes a stream and floodplain. The parcel is identified as a priority for protection by both the City of Durham's and Raleigh's Watershed Protection Programs.



The easement area borders 877 feet of the Norfolk Southern Rail land and the planned future Durham-to-Roxboro Rail Trail.



The easement area is entirely forested with both pine and hardwood trees.



The easement area has almost 1,000 feet of road frontage along Stagville Road, part of the North Durham County Byway.