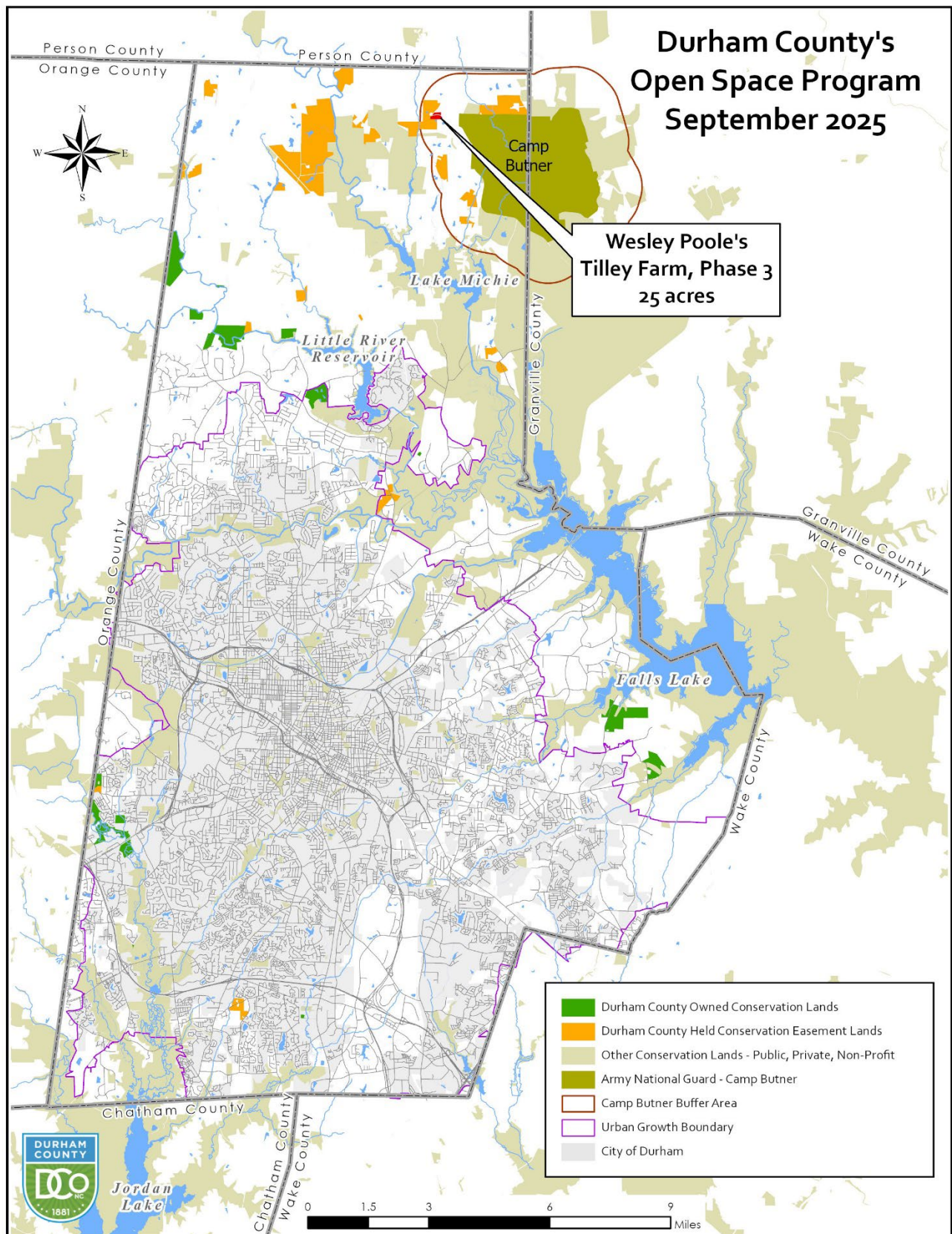


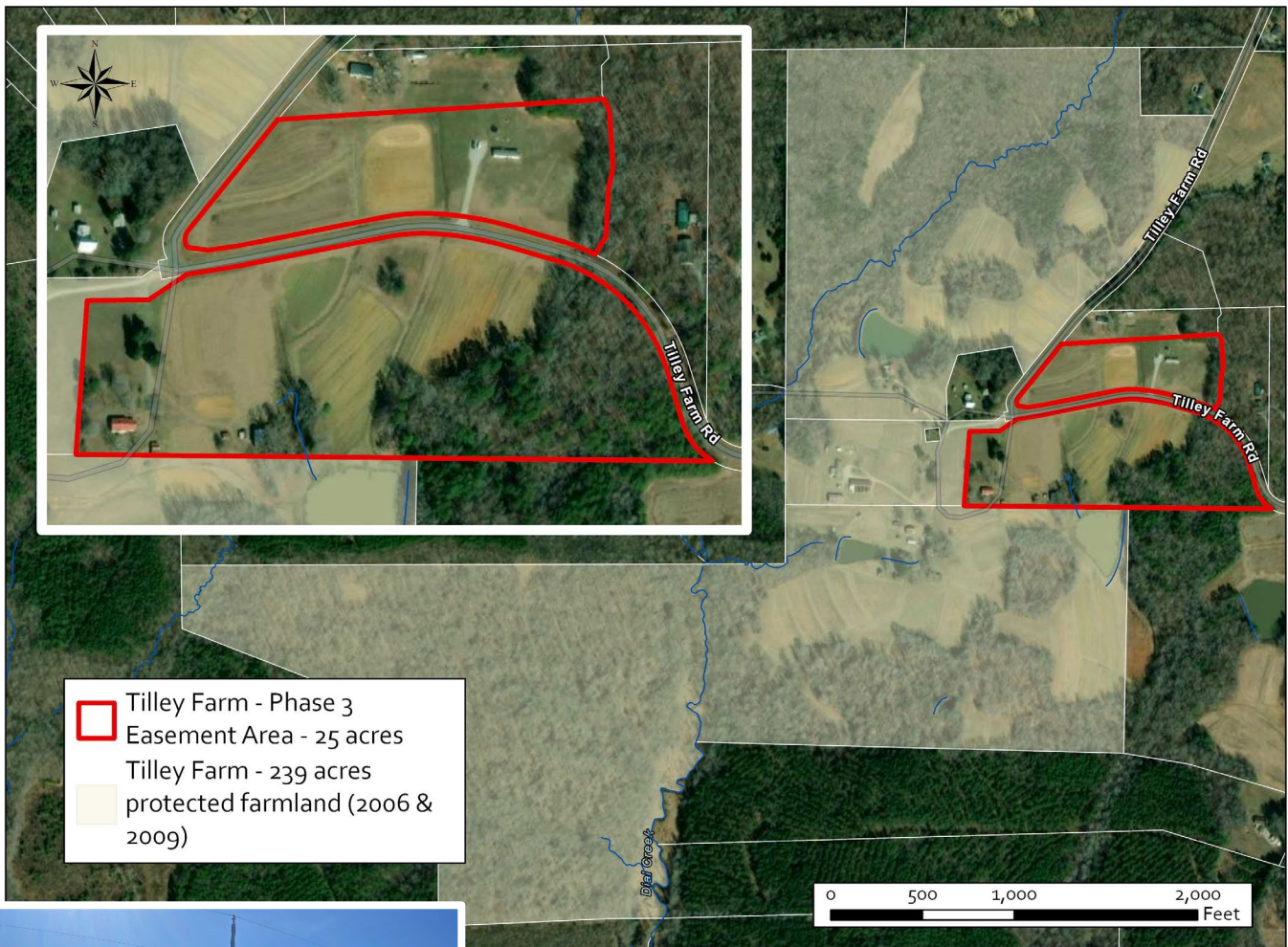
Tilley Farm, Phase 3 – Wesley Poole, owner  
1800 and 1801 Tilley Farm Road (REID 208060 & 191949) -25 acres





# Tilley Farm, Phase 3 – Wesley Poole, owner 1800 and 1801 Tilley Farm Road (REID 208060 & 191949) -25 acres

## Wesley Poole's Tilley Farm Easement Addition, Phase 3 - Tilley Farm Road - 25 acres



Durham County worked with Wesley's uncle, Roger Tilley, in 2006 and 2009 to protect the adjacent 239 acres. Roger still tends the open land growing small grains and tobacco on rotation.



Roger Tilley and nephew, Wesley Poole, have both lived on the farm their entire life.



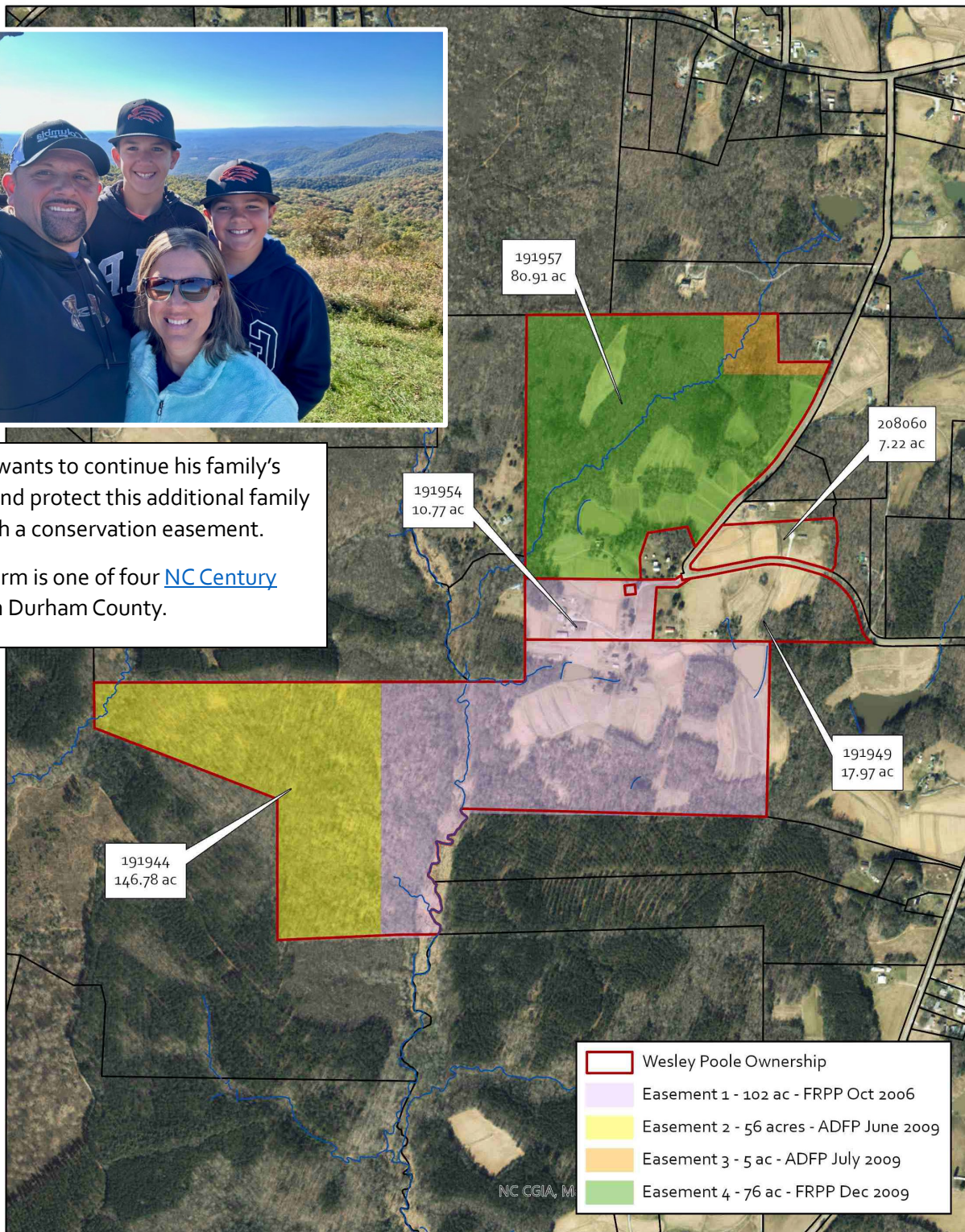
Tilley Farm, Phase 3 – Wesley Poole, owner  
1800 and 1801 Tilley Farm Road (REID 208060 & 191949) -25 acres

Tilley Farm -1803 Tilley Farm Road, Rougemont



Wesley wants to continue his family's legacy and protect this additional family land with a conservation easement.

Tilley Farm is one of four [NC Century Farms](#) in Durham County.



Engineering & Environmental Services  
Open Space and Farmland Program  
10/27/2023