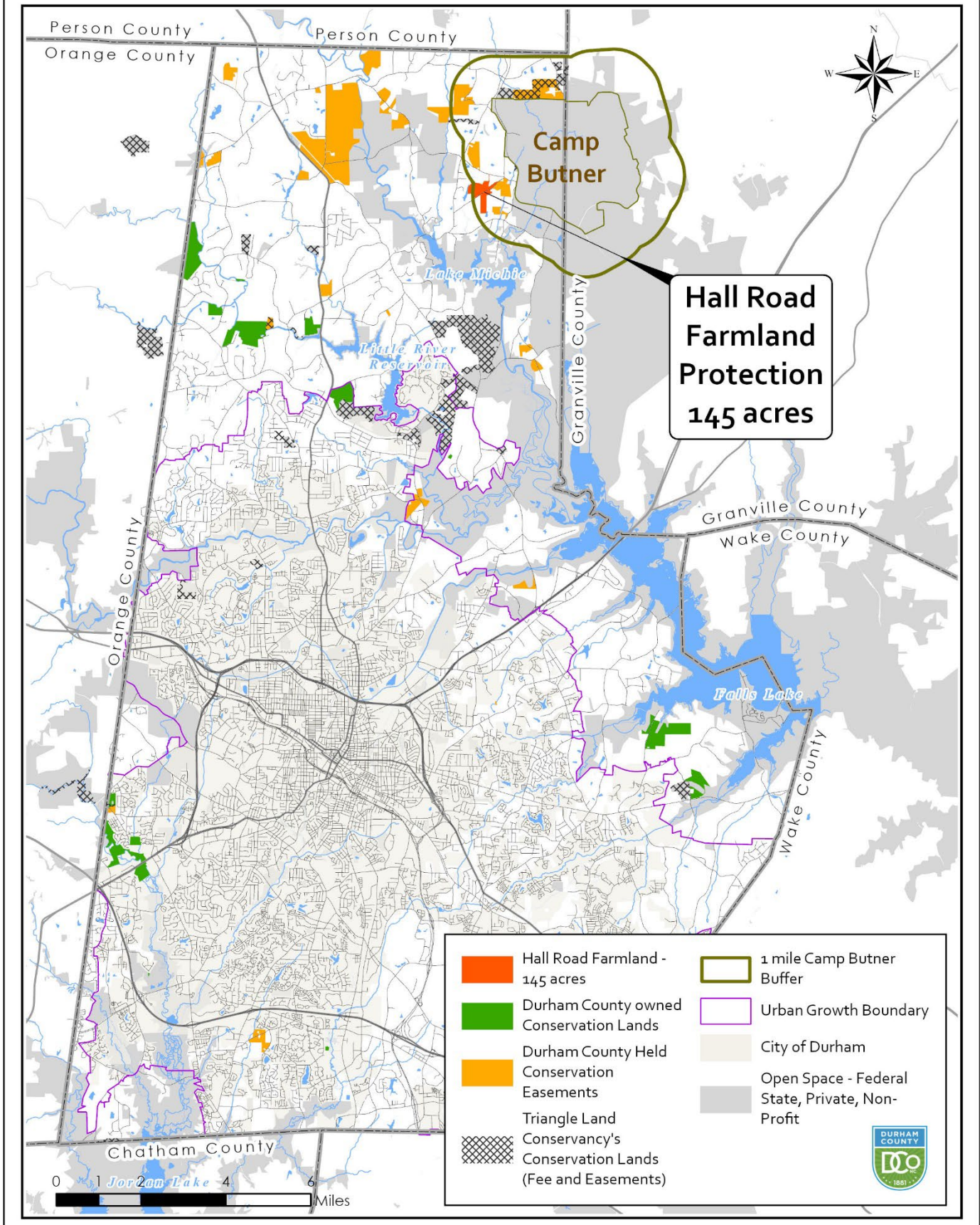
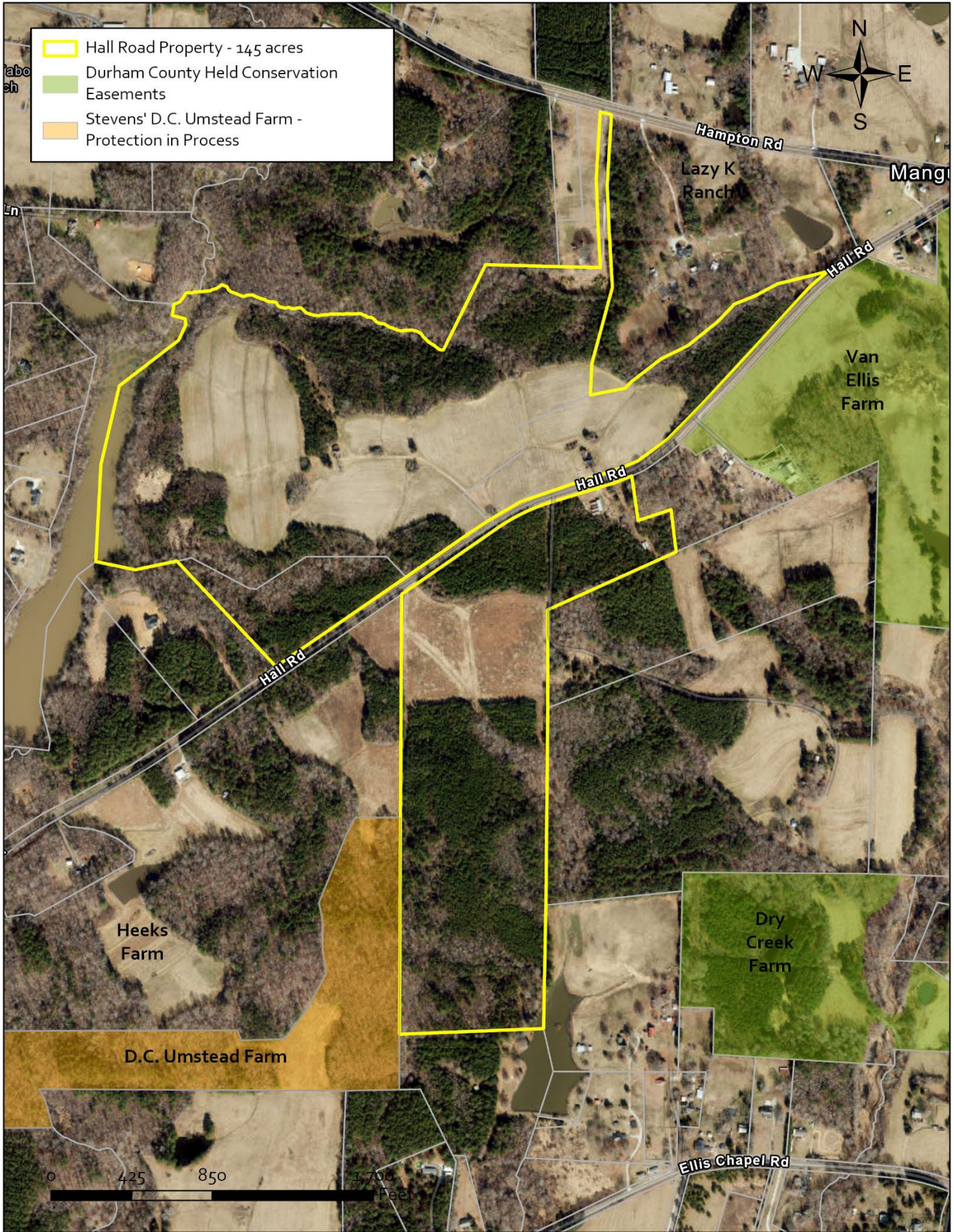


Hall Road Farmland Protection – 145 acres

LOCATION MAP - Hall Road Farmland Protection



Hall Road Farmland Protection – 145 acres



Hall Road Farmland Protection – 145 acres



The Hall Road property includes approximately 32 acres of open, tillable land underlain by significant and prime agricultural soils. The remainder of the tract is primarily forested and managed for pine sawtimber.



The Hall Road property contains approximately 2,600 linear feet of streams, all of which will be protected under the conservation easement.

The property is a priority parcel for protection by both the City of Durham's and Raleigh's Watershed Protection Programs.