



# 2018 Farmland Protection Advisory Board Update

March 8, 2018

# Guiding Principals

---

- NCDA Agriculture Development & Farmland Preservation plan funded with a \$30,000 grant in 2008
- BOCC adopted plan in December 2009
- 32 goals in the Agriculture Economic Development and Farmland Protection Plan (“Farmland Plan”)



# Farmland Board Accomplishments to Date

- VAD Program
- Conservation Easements
- Farm Tours
- Grants
- Marketing
- Agriculture Economic Development Grants
- Local Food Purchasing
- Trainings
- School Programs

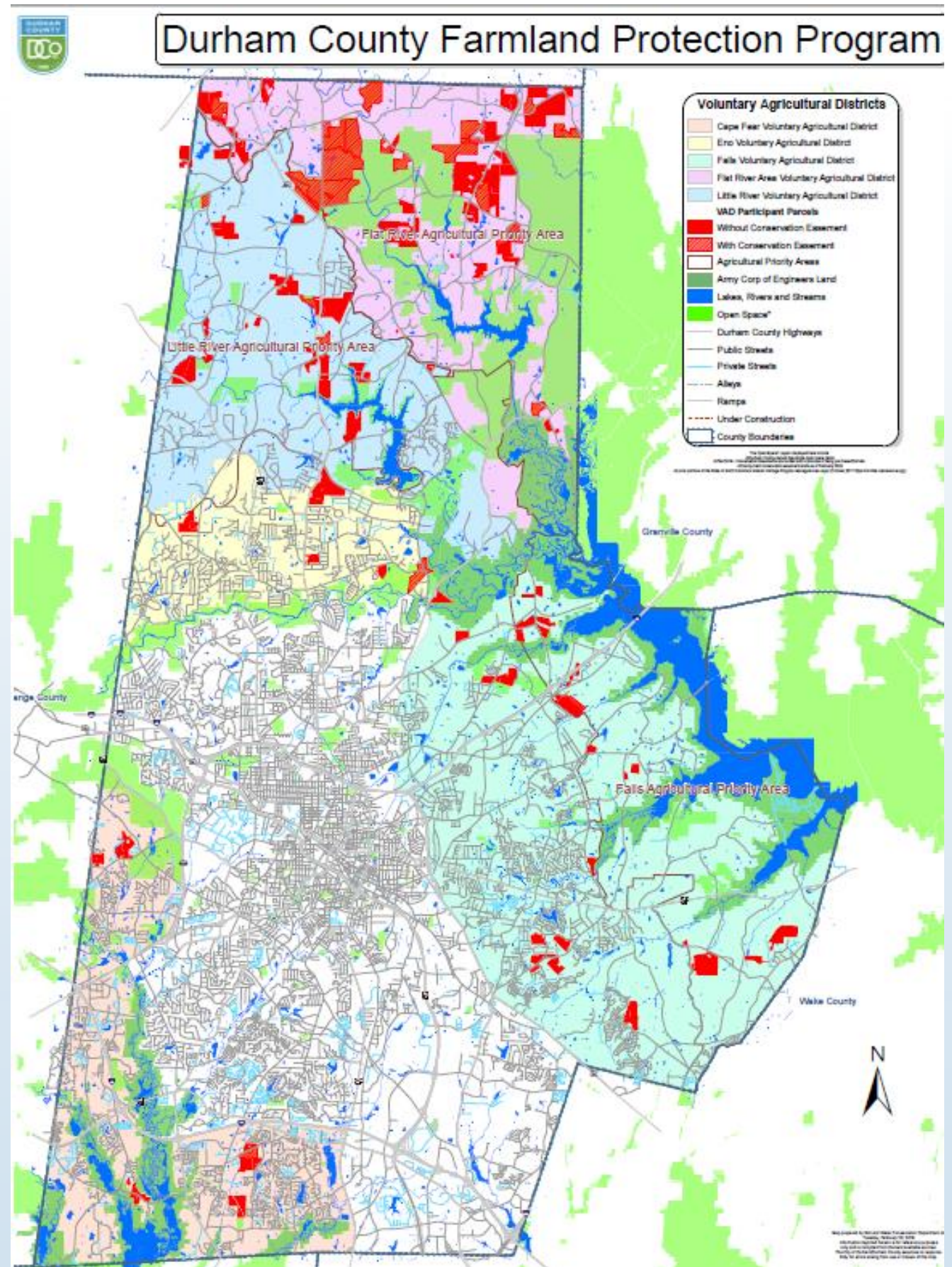




# Voluntary Agricultural Districts (VAD) Participation

Total Number of Participants  
(2015 compared to 2017)

- # of Farms: 89/plus 14
- Parcels of Land: 197/plus 12
- Acreage: 6,303/plus 579





# Present Use Value (PUV) Land

Land use	Parcels 2015	Parcels 2017	Acreage 2015	Acreage 2017
Agriculture	347	358	13,375	13,410
Forestry	541	431	14,267	14,765
Horticulture	16	13	241	214

Over 28,000 acres in Durham county are listed under PUV, accounting for over 900 parcels of land. Horticulture is the #1 Ag Business





# Conservation Easements

---



- Conservation easements are an important tool that the County uses to protect important farmlands from future development, while keeping the farms in private ownership and on the tax rolls.
- The County works with interested landowners on a voluntary basis, with grants and donations helping to keep the program affordable.

# Conservation Easement Summary

Farm Easements completed (2001-2017)	# of farms	Farm Acres protected	Overall Land Value	Grant and partner funds	Durham County Land Cost
<b>Total</b>	15	2,131.5	\$10,434,930	\$8,123,269	\$2,311,661
<b>Percentage of overall cost:</b>				78%	22%

**Durham County has leveraged 78 cents on the dollar in outside funding for farmland easements.**



# 2016-2018 Farm Easements Summary

---



- Two easements closed on 77 acres
  - *(using \$195,075 in federal matching funds)*
- 6 Easements underway on 261 acres
- New grant funds awarded: \$749,525





# Cost of Community Services

This table summarizes the public costs of services for different land uses in several piedmont counties. A ratio above 1 means that the land use generates more in tax revenues than it requires in services.

County	Commercial Land Use	Agricultural Land Use	Residential Land Use
Durham	3.03	1.70	0.87
Alamance	4.29	1.69	0.68
Chatham	2.13	1.09	0.90
Orange	4.21	1.38	0.76
Wake	5.63	2.12	0.65



# May 2017 Farm Tour



Forty eight participants joined the Durham FPAB on a tour to learn about:

- Conservation Easements & Farmland Use in Durham County
  - Agricultural Best Management Practices (BMPs);
  - Agri-science programs at schools;



# Grants

---



A grant for \$50,000 was received from the National Association of Conservation Districts (NACD) to support two projects.

- Bull City Cool Food Hub &
- the Durham Public Schools Hub Farm

Funding was received to provide staff support for the two programs and promote the projects in the community



# Bull City Cool Food Hub

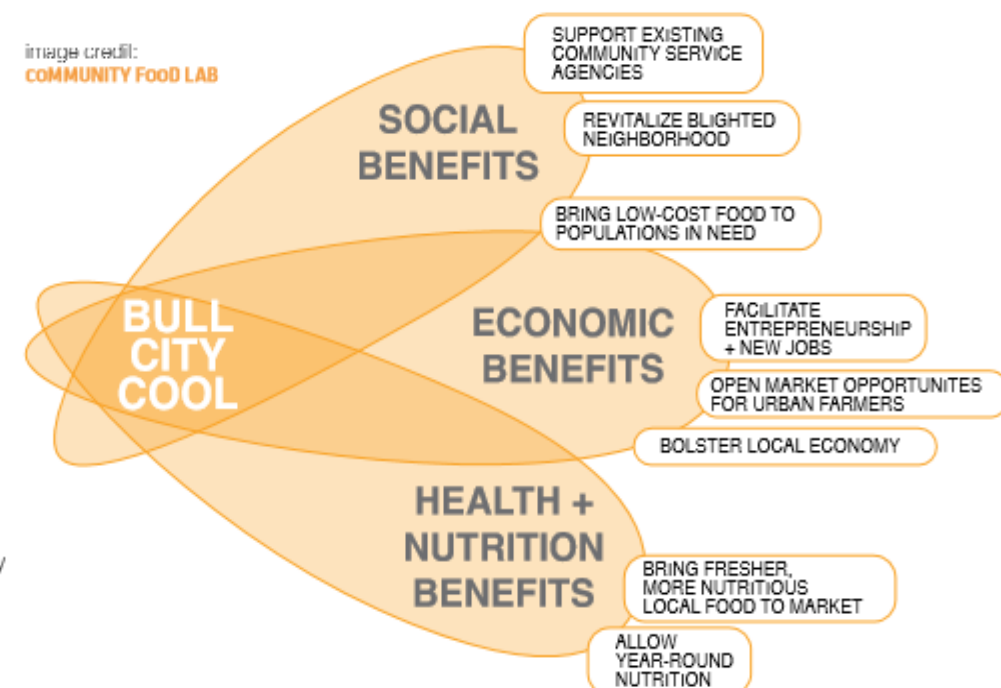


**The partners:**  
Reinvestment Partners  
Community Development  
Corporation



**The BCC tenants**  
Farmer Foodshare  
Interfaith Food Shuttle  
Ungraded Produce

Anticipated outcomes of the Bull City Cool concept, including benefits provided by a food processing kitchen





# DPS Hub Farm





# Marketing

## DURHAM COUNTY FARMLAND PROTECTION PROGRAM



TOGETHER  
WE CAN  
PROTECT IT

DURHAM  
SOIL & WATER  
CONSERVATION DISTRICT

Soil & Water  
Tel: 919-561-1111  
Fax: 919-321-1111  
www.dconcd.org

The Durham FPAB and SWCD staff developed brochures and marketing materials to advertise local organizations, markets & farms.



FRESH FROM THE FARM-  
YEAR ROUND!

Durham Markets  
&  
Farms



Buy Local



DURHAM ROOTS  
FARMERS' MARKET  
AT NORTHGATE



# Agriculture Economic Development Grant

---

In FY18 \$25,000 was allocated for a pilot program. A total of 13 applicants requested \$53,957.64. The grant program funded:

1. Two new and beginning farmers
2. Two socially disadvantaged farmers
3. One traditional farmer

Also supported School Programs:

1. Lowe's Grove Middle Ag Ed program
2. Neal Middle Ag Ed program
3. Northern High Ag Ed
4. The DPS Hub Farm



**\*\*10 Durham Farms requested \$88,029.98 from the RAFL Grant Program in January 2018\*\***

# Local Sourcing Project Recommendations

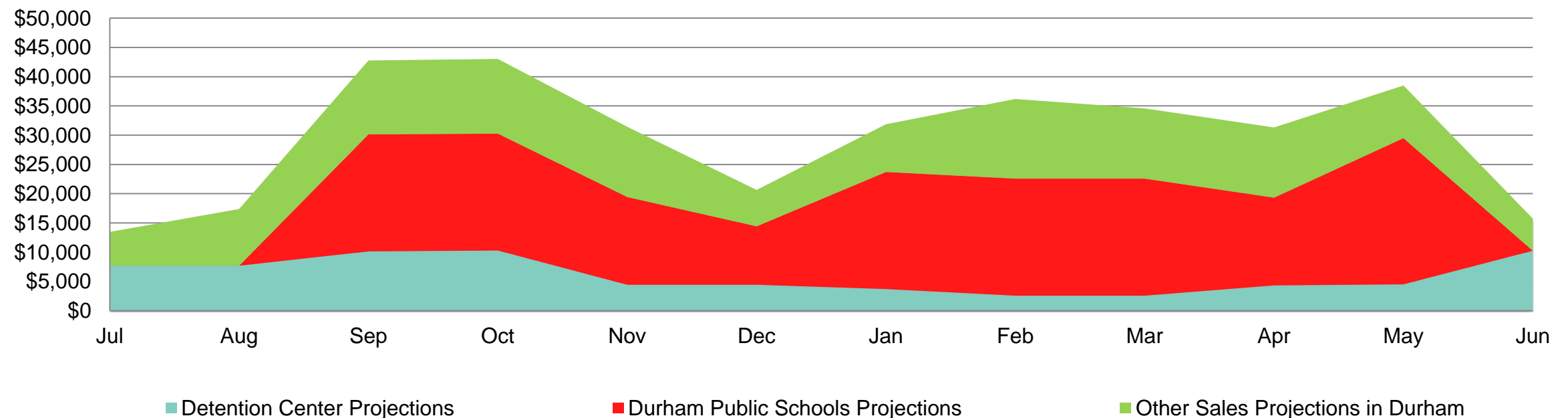


- **Roll over unspent funds awarded to Farmer Foodshare in 17-18**
- **Allow subsidy funds to be spent with Durham Public Schools, and/or social service agencies.**
  - Detention centers are the most price sensitive buyer and large amounts of subsidy are needed. Other local institutions, like Durham Public Schools, have a higher base price to start, so less subsidy funds are needed and would provide large local markets for Durham farmers.
- **Increase local sourcing funding from \$20k to \$40k in FY 18-19 to enable DPS and the detention center to source 20% from Durham farmers**

## Detention Center vs Other Local Sales Outlets FY 18-19

Total Sales Projections: **\$356,878**

Sales captured by Durham County Farmers last FY: **4%**



**FARMER FOODSHARE**

*Connecting people who grow food with people who need food*

# Training



In 2016 & 2017, a total of 371 participants have attended the FPAB's 10 Farmer Appreciation Breakfasts, Good Agricultural Practices (GAP) Trainings and an Educational Workshop to network and learn about topics that impact farmers' daily lives.





# BETC Program Partners/Funding

---



## Funding for BETC

USDA NIFA \$30,714 (2012-2014)  
Smith Richardson Foundation \$50,000 (2016-2017)  
NACD & NRCS for Contractor \$50,000 (2016-2017)  
The Longleaf Collective \$18,500 (2017)  
Duke Energy Water Resources Fund \$26,500 (2018)



## **BETC has received recognition for innovation in education and conservation :**

- 2017 Duke Energy Video & Op-Ed in the Durham Herald Sun
- 2017 *American Association for Agricultural Education* – Iowa State University, Iowa
- 2017 *Annual Conference of the American Association for Teaching & Curriculum* – Denver, Colorado
- 2016- Received an Education and Leadership Source Water Protection Award from the NC Source Water Collaborative.
- 2016 *Transforming Local Government (TLG) and League of Minnesota Cities Conference* - St. Paul, Minnesota
- 2016 *Best of Both Worlds International Conference* - Estes Park, Colorado



# BETC Program Community Impact

---

Bionomic Educational Training Center (BETC, pronounced “Betsy”) BETC provides funding, work experience and practical math and science lessons and green infrastructure training for Southern High School students piloted at Southern High.

Established at four schools now Northern High, Riverside High & Lowe’s Grove Middle & Southern High.

**Landowners** - Personal investment to hire students in their local community (\$/sweat); improved property value

**District** - Improved water quality through focused community efforts; visibility for the District

**School System-** improved student performance; social responsibility; feeling of community

**Students** - FFA/OCS/NCSSM

Exposure to horticulture & stormwater management job skills and experience; leadership and entrepreneurial skills

# Top 3 Farmland Plan Implementation Priorities for 2018-2019

---

1. **People**-Improve & Increase education in support of career readiness
2. **Profit**-Expand Agriculture Economic Development Position
3. **Preserve**-Land Transition Planning and succession planning





# 2019 Budget Request

---

- Farmland Economic Development Grant Program increase from \$25,000 to \$50,000
- Continue to support the Local Food Purchasing program with the Farmer Foodshare Organization
- Continue CIP Funding for Easements



# 2019 Budget Request

---

An Agricultural Economic Development Program funding increase from \$25,000 to \$50,000

- Farmers Markets;
- SNAP Double-bucks programs;
- Ag Development in schools;
- Food Safety and GAP certification audits;
- Infrastructure improvements to the farm for food safety compliance;
- New and beginning farmers small startup funds; and
- Disadvantaged and underserved farmer financial assistance.



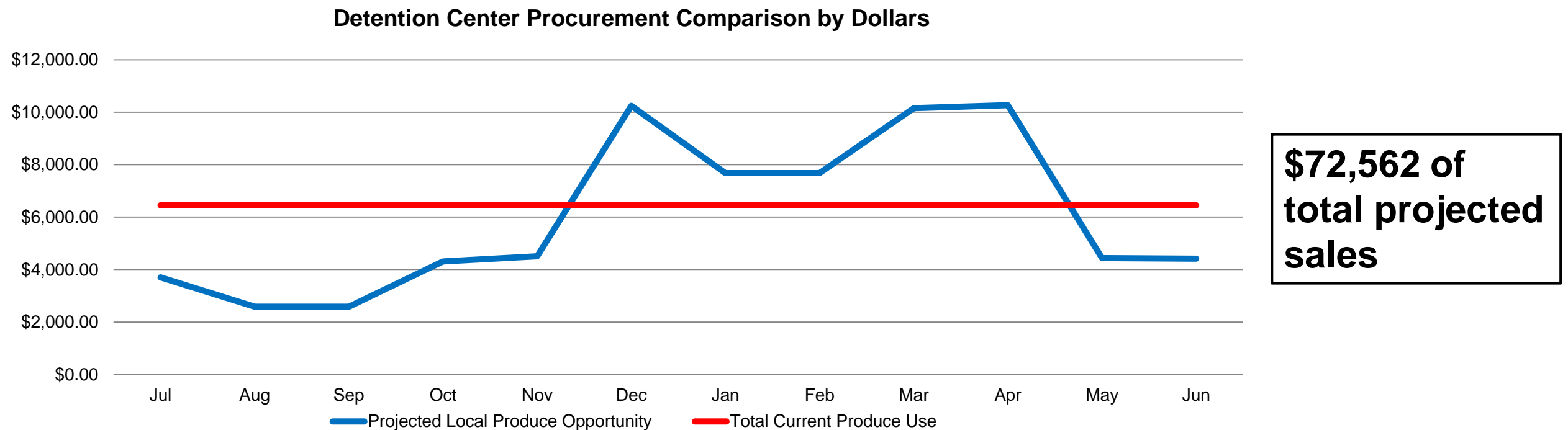
# Local Sourcing Project Update

**July 2017:** Farmer Foodshare became a certified vendor for ABL, the food service management company for the Durham Detention Center.

**September 2017:** Farmer Foodshare delivered several orders of Bibb lettuce from Endless Sun, the only GAP certified Durham farm at that time.

**November 2017:** Endless Sun converted their Durham operation from lettuce to hemp, thereby eliminating Durham County GAP certified product available for sale.

**February 2018:** Durham farmer grantees met with Farmer Foodshare and Soil and Water staff representatives. All farmers plan to be GAP certified and supplying to the detention center in 2018. Using that information, we have put together the following charts to show the realistic potential sales for Durham farmers to the detention center in the coming fiscal year, taking into account seasonal availability and the rigidity of the detention center ordering:



**FARMER FOODSHARE**

*Connecting people who grow food with people who need food*



# Future Priorities

---

- Expand Local Purchasing Program
- Ag Internships
- Farmland Ordinance Revision
- Creation of a Durham Farm Campus
- Student Field Trips to Farms
- New and Existing Farmer Assistance



# Questions?

---

