

July 13, 2020
Ryan Eaves, PE
McKenzie Myers, PE
Inga Kennedy
Keith Reading

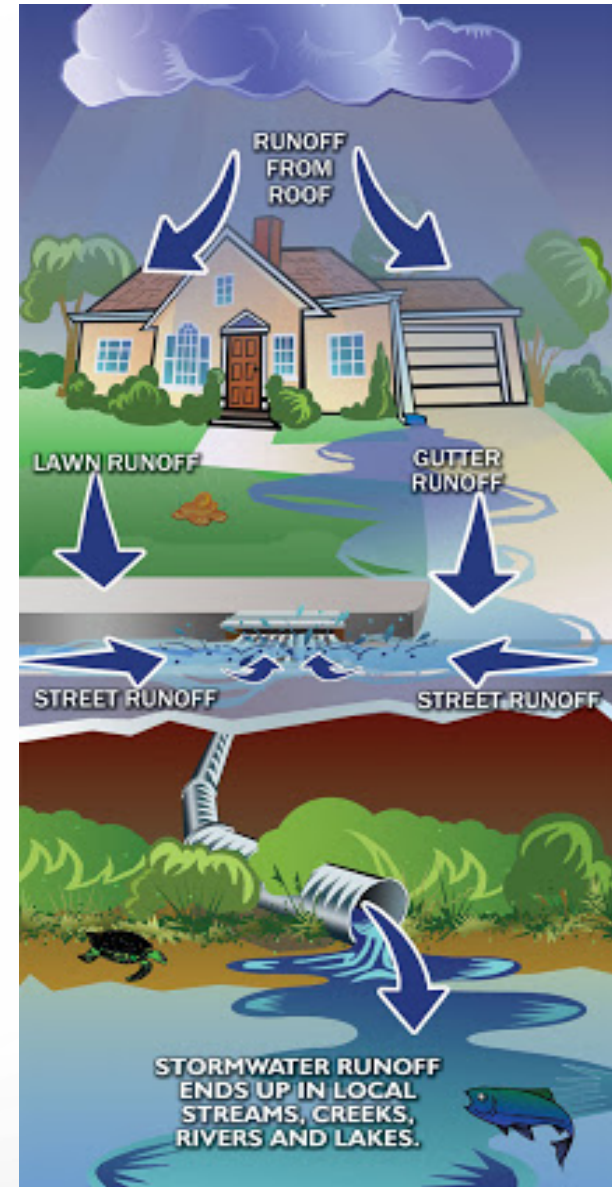


DURHAM COUNTY NC

Stormwater Utility Fee Outreach Update

Today's Presentation

- Summary of Stormwater Utility Fee
- Public Outreach Efforts
- Stormwater Utility Fee Ordinance
- Program Priorities



How much will I pay per year?

ERU: Equivalent Residential Unit

1 ERU = 4,300 square feet of impervious area, \$24 per ERU annually



Tier 1 Single Family
Residential Properties (SFR)



400 to 2,700 square feet of
impervious area – 0.5 ERUs **(\$12)**



Tier 2 Single Family
Residential Properties (SFR)



2,700 to 6,000 square feet of
impervious area – 1 ERU **(\$24)**



Tier 3 Single Family
Residential Properties (SFR)



Greater than 6,000 square feet of
impervious area – 2 ERUs **(\$48)**



Non-Single Family Residential
Properties (NSFR) - All other



Charged per ERU - **\$24/ERU**
(minimum of 1 ERU)





What will Durham County do with the money collected from taxpayers?

Rules Compliance:

- Land Conservation
- Stormwater retrofits
- Design and construct stormwater control measures
- Public education



Durham County Government

www.dconc.gov

Specific Outreach Groups

- NC Farm Bureau (2/13)
- Durham County Farmland Protection Board (6/18)
- Environment@RTP Board (6/25)
- Environmental Affairs Board (7/8)
- Durham County Soil and Water Conservation District (7/13)



Soil & Water



ENVIRONMENTAL AFFAIRS BOARD



Public Outreach Efforts

- Direct website page
www.dconc.gov/stormwaterutility
- Email address created
dcostormwaterutility@outlook.com
- Stormwater Utility Fee Questionnaire
- Presentation recording
- Social Media Postings
- Live Public Q&A on Zoom

STORMWATER UTILITY FEE

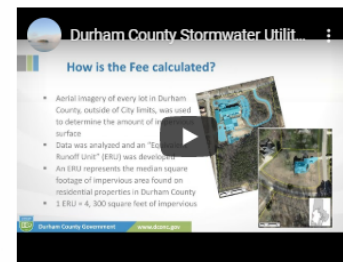
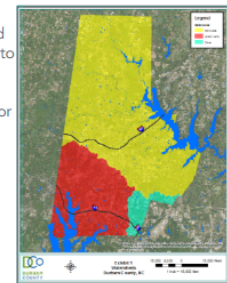
Font Size: [A](#) [Share & Bookmark](#) [Feedback](#) [Print](#)

Durham County Stormwater Utility Fee

The Durham County Stormwater and Erosion Control Division is tasked with finding ways to manage the ongoing challenge of stormwater impacts to the unincorporated areas of the County and meet state requirements (Jordan Lake and Falls Lake Rules) to reduce pollutants, especially nutrients like phosphorous and nitrogen, in our waterways. As the County continues to grow, the need to address increasing stormwater runoff and the pollutants it carries is a necessity. Nutrient management for both existing and new development is mandated by the North Carolina Department of Environmental Quality.

In order to pay for the projects that will be needed to address nutrient loading from existing development and meet state stormwater requirements, Durham County has implemented a Stormwater Utility Fee, to go into effect in August 2020. It is a fair, equitable, and stable way for Durham County to collect revenue to help fund the activities required to meet the nutrient rules. It is estimated that it may cost Durham County more than \$70 million dollars over the next 20 years to reduce pollutants in our waterways to meet the state requirements.

The Stormwater Utility Fee was derived from a formula that spreads the cost of the utility across County property owners in a way that reflects each property's contribution to stormwater runoff.



We want to hear from you!

STORMWATER UTILITY FEE SURVEY



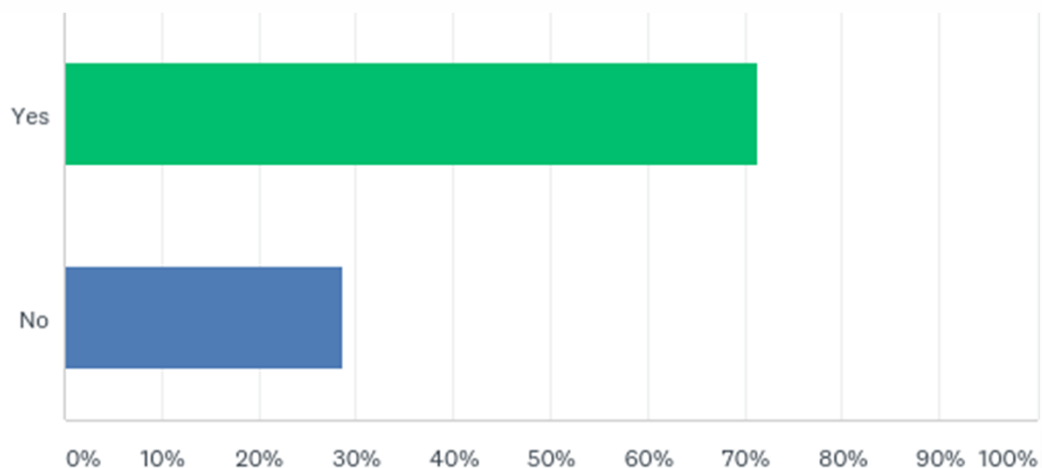
Durham County Government

www.dconc.gov



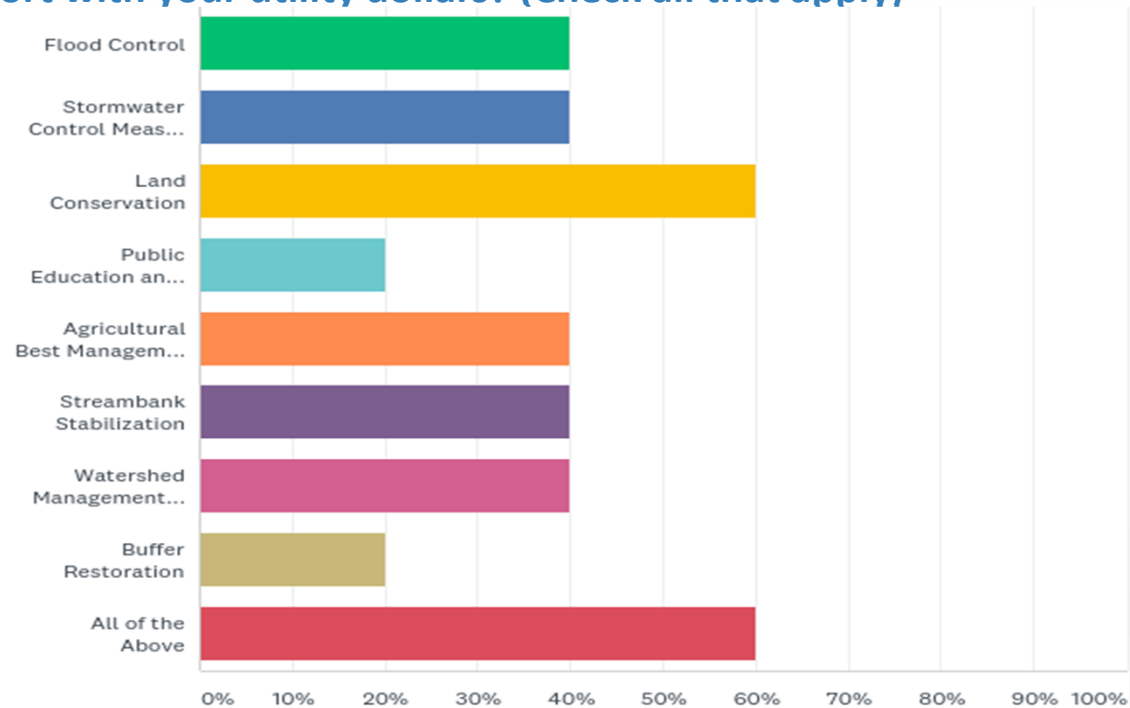
Questionnaire Results

Q3: Do you feel confident in the cleanliness of the water you are using during recreational activities?



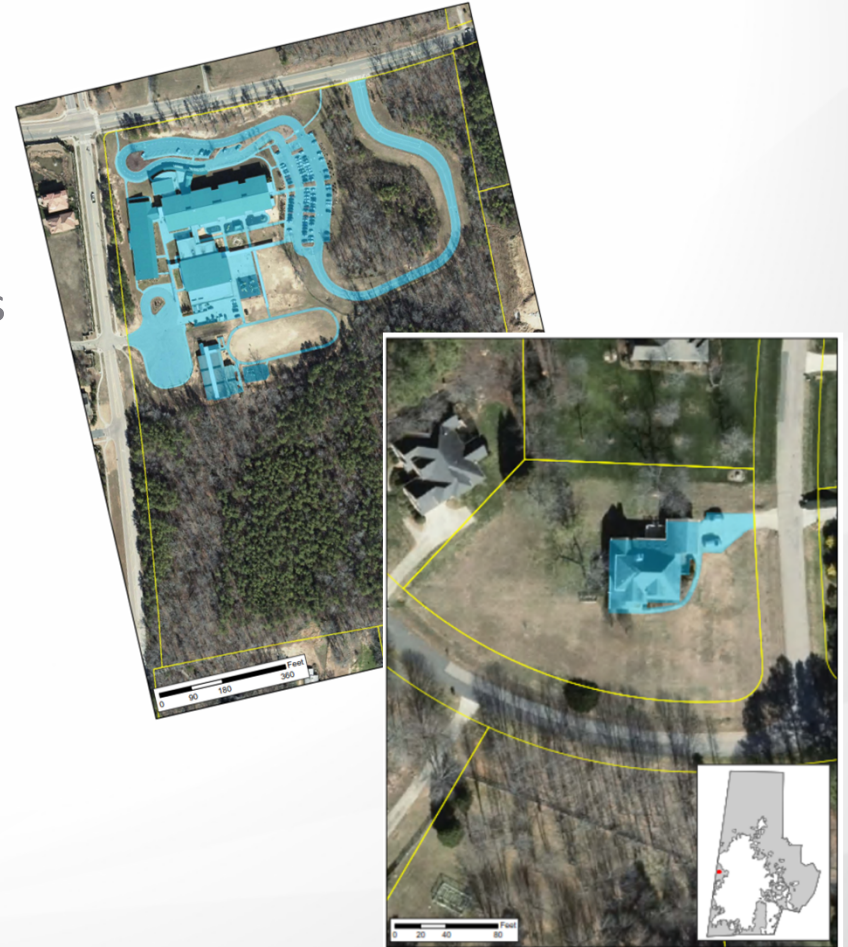
Questionnaire Results

Q7: Durham County is required to complete a number of measures to reduce nutrient pollution into our waterways, specifically Jordan and Falls Lakes. What types of activities would you support with your utility dollars? (Check all that apply)



Public Outreach Efforts Moving Forward

- Continuation of Stormwater Utility Fee Questionnaire
- Additional coordination with targeted groups
- Expansion of website information
- Increased social media outreach
- Development of postcard mailing with Tax Department
- Correspondence with property owners regarding fee calculation questions





Stormwater Utility Ordinance

Stormwater Utility Ordinance required to be adopted, and includes:

- Section 1. Findings
- Section 2. Purpose
- Section 3. Definitions
- Section 4. Establishment of a Stormwater Management Utility and Stormwater Management Enterprise Fund
- Section 5. Jurisdiction
- Section 6. Rate Structure
- Section 7. Schedule of Fees and Charges
- Section 8. Billing and Collections
- Section 9. Disposition of Service Charges and Fees and/or Appropriations
- Section 10. Exemptions and Credits Applicable to Stormwater Management Service Charges
- Section 11. Miscellaneous



Stormwater Program Priorities

Rules Compliance

Durham County's ultimate goal is to be in compliance with the Falls and Jordan Rules



Efficiency

Recognizing these are taxpayer dollars, we will seek to get the best bang for your buck.

Resiliency

The County will seek out opportunities to address not only water quality, but the effects of climate change and flooding

Environmental Justice

Where possible, the County will prioritize underserved areas and populations for projects to improve watershed health.





Questions?



Durham County Government

www.dconc.gov